

CONCURSO DE VOCABULARIO



cama



alfombra



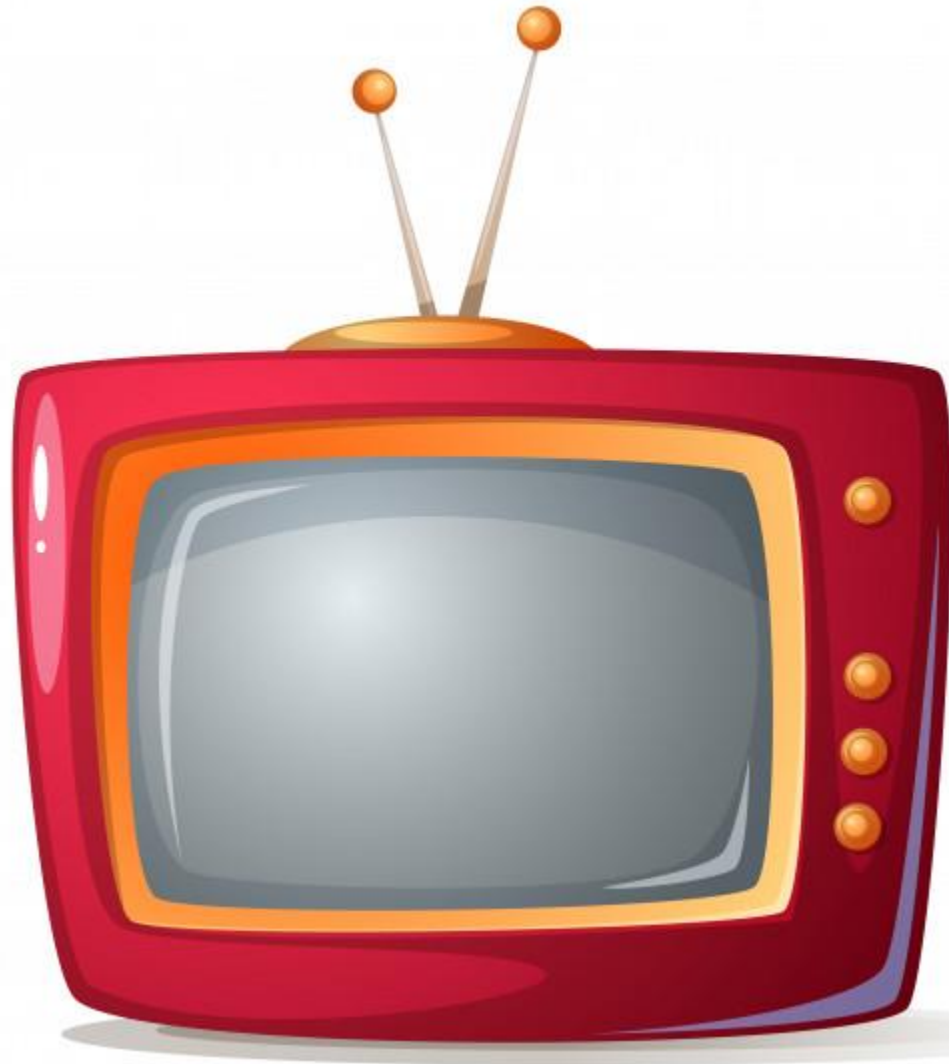
baño



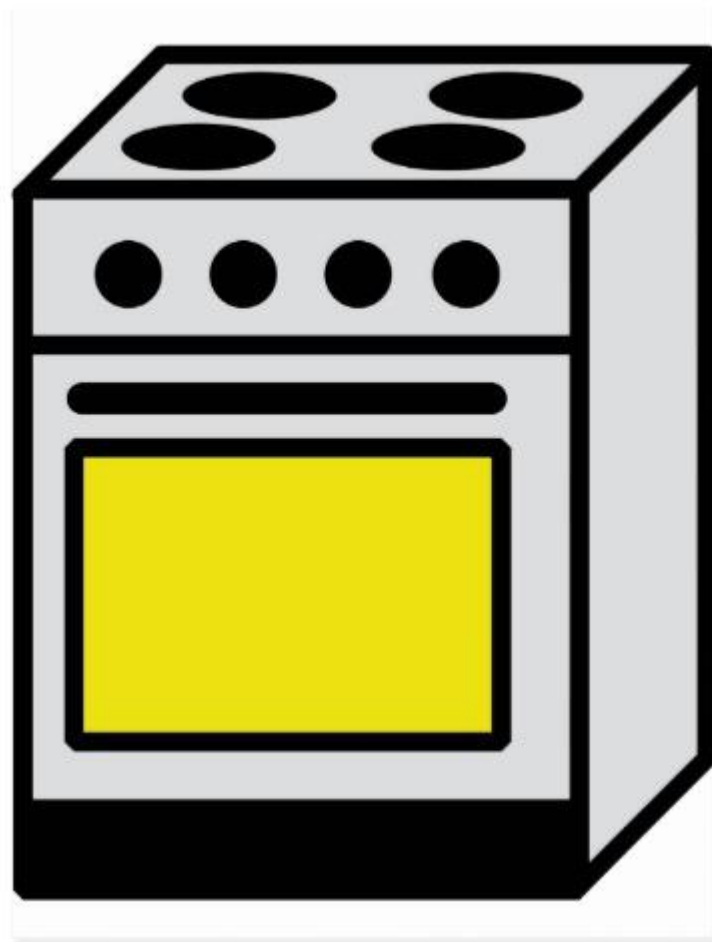
lavabo - lavamanos



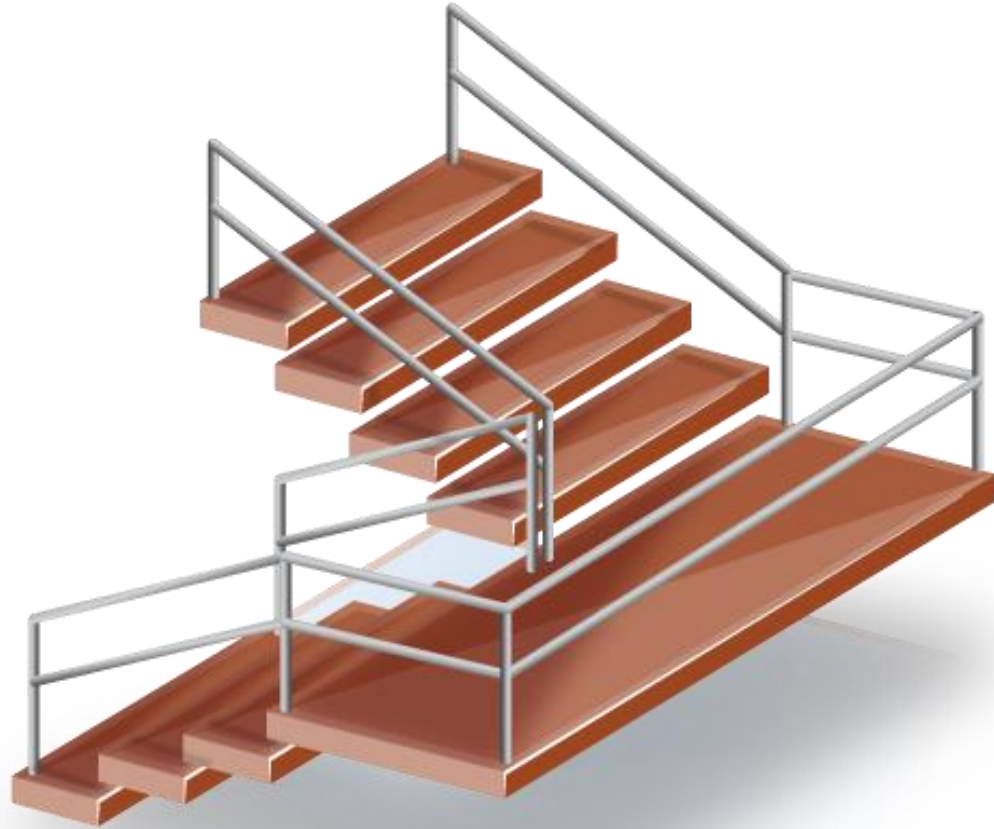
televvisor



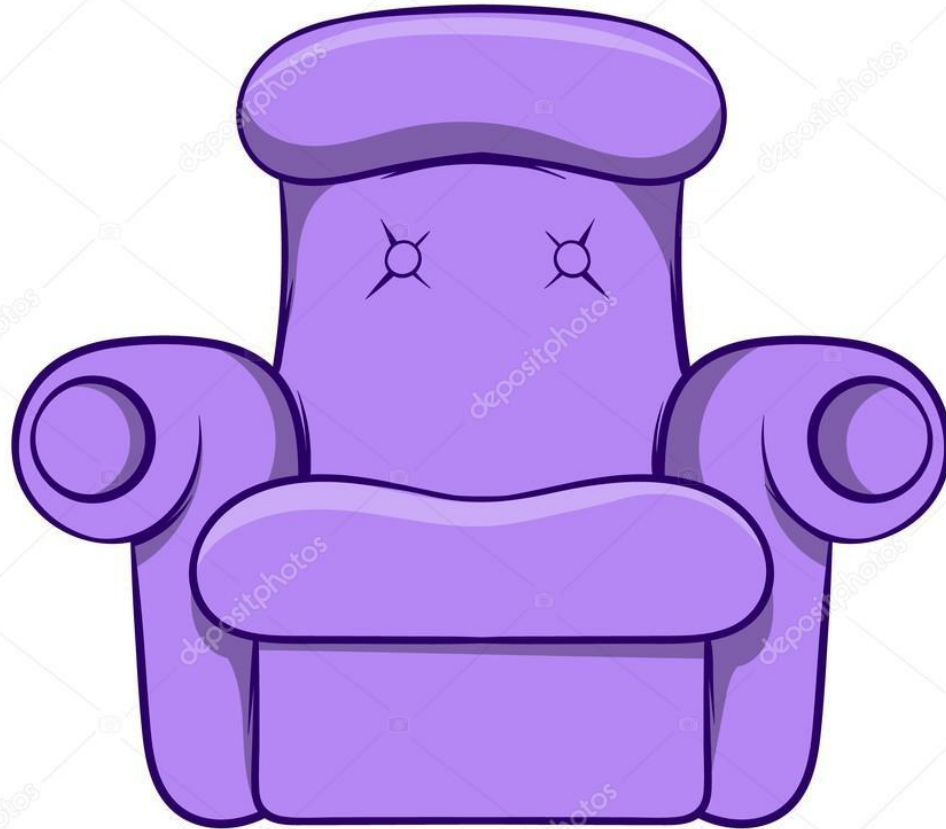
estufa



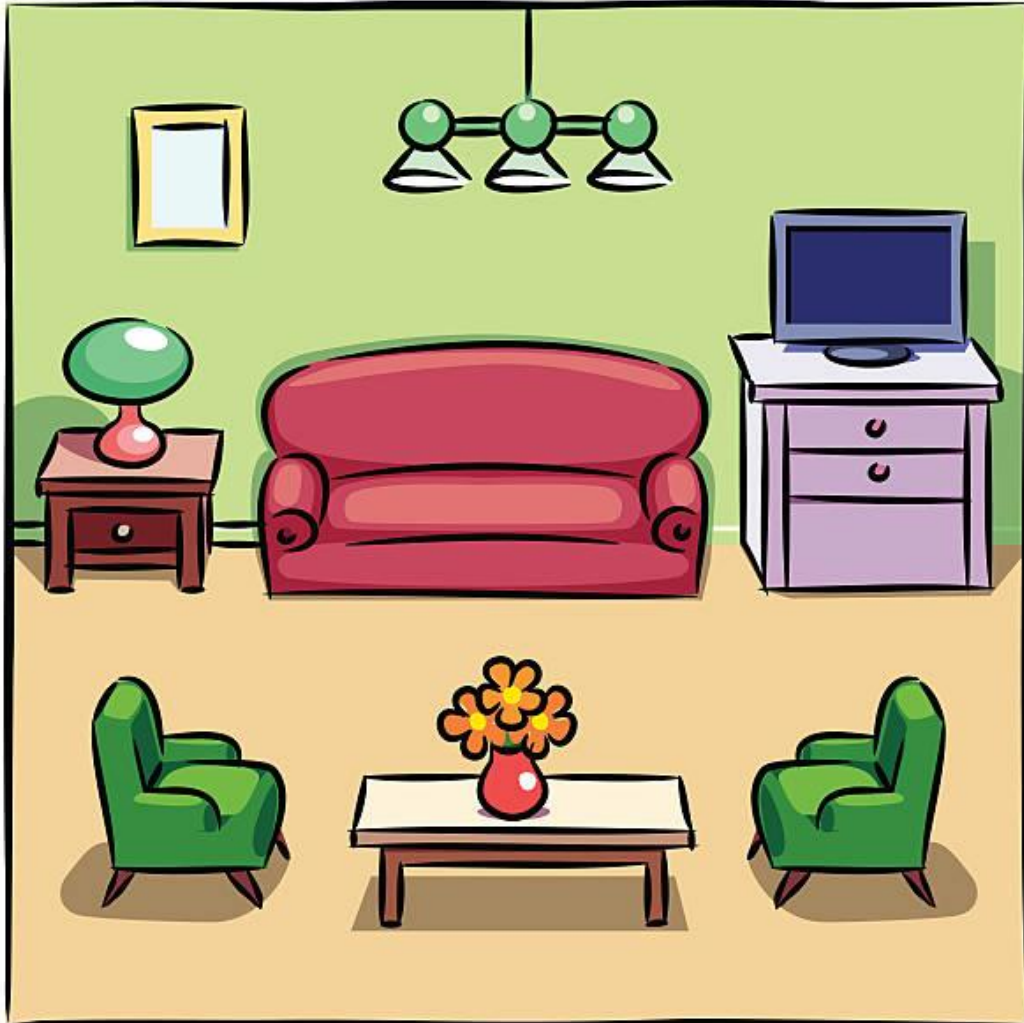
escalera



sillón



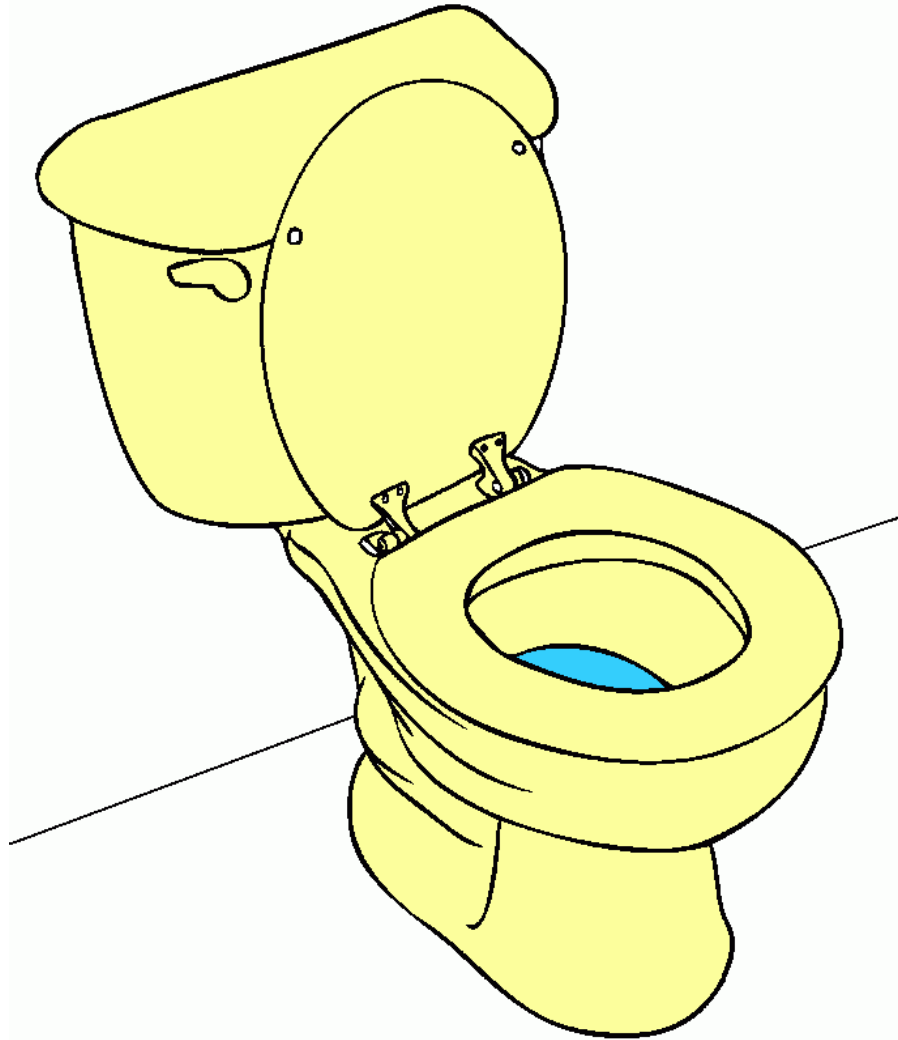
sala



lámpara



inodoro



casa



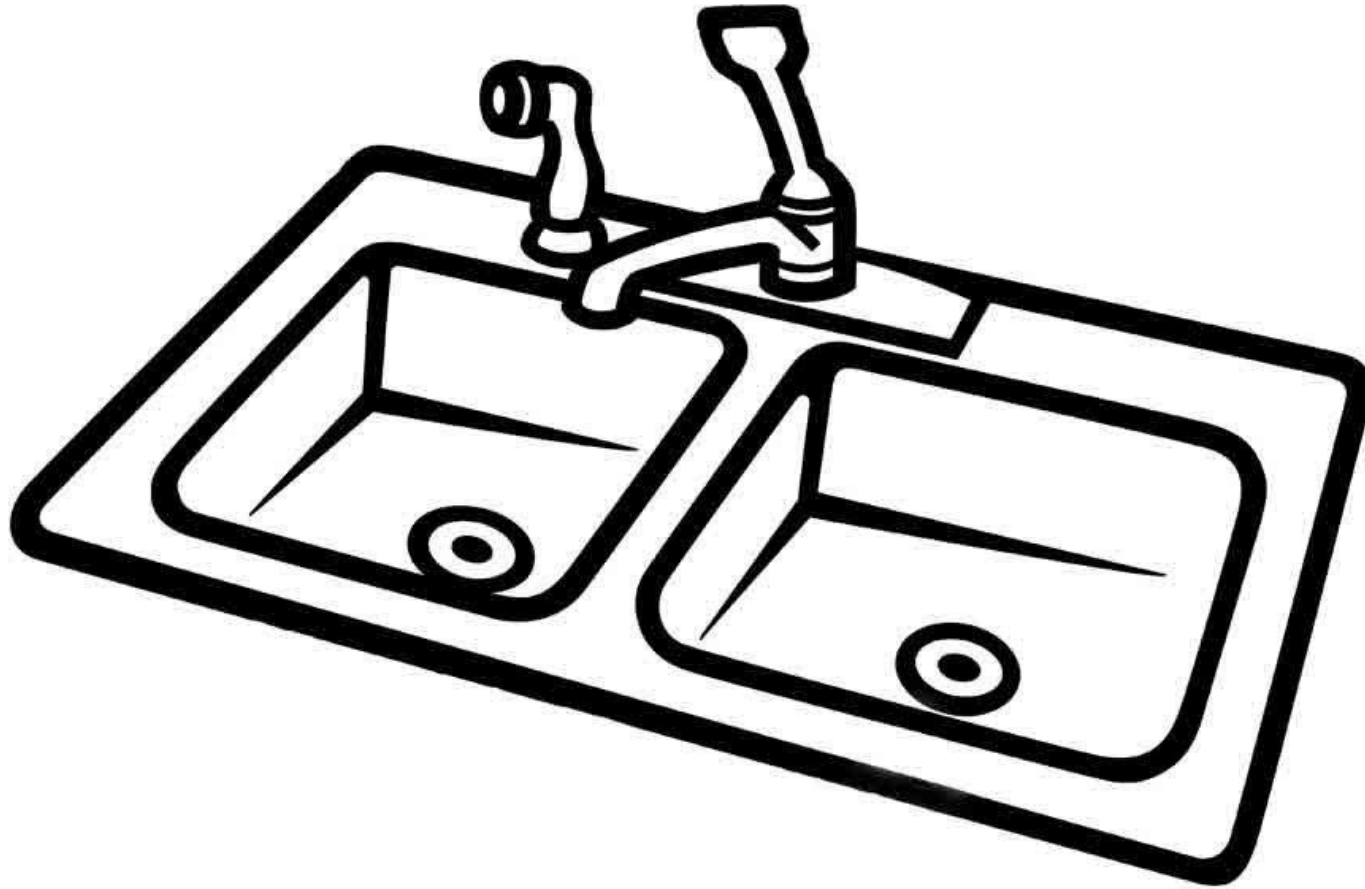
árbol



ducha



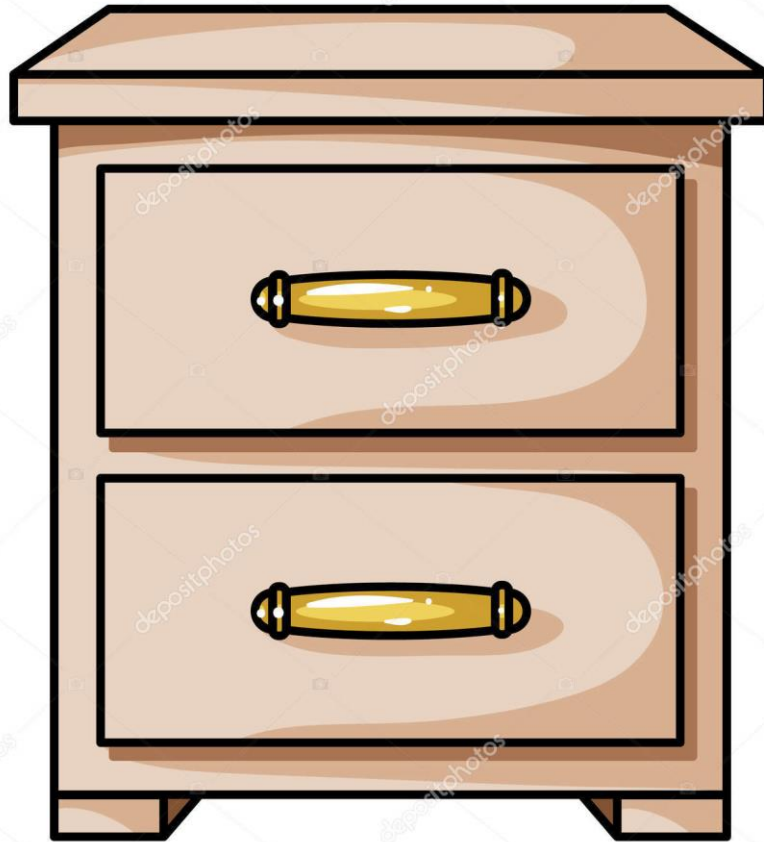
fregadero



dormitorio



mesita de noche



cómoda



comedor



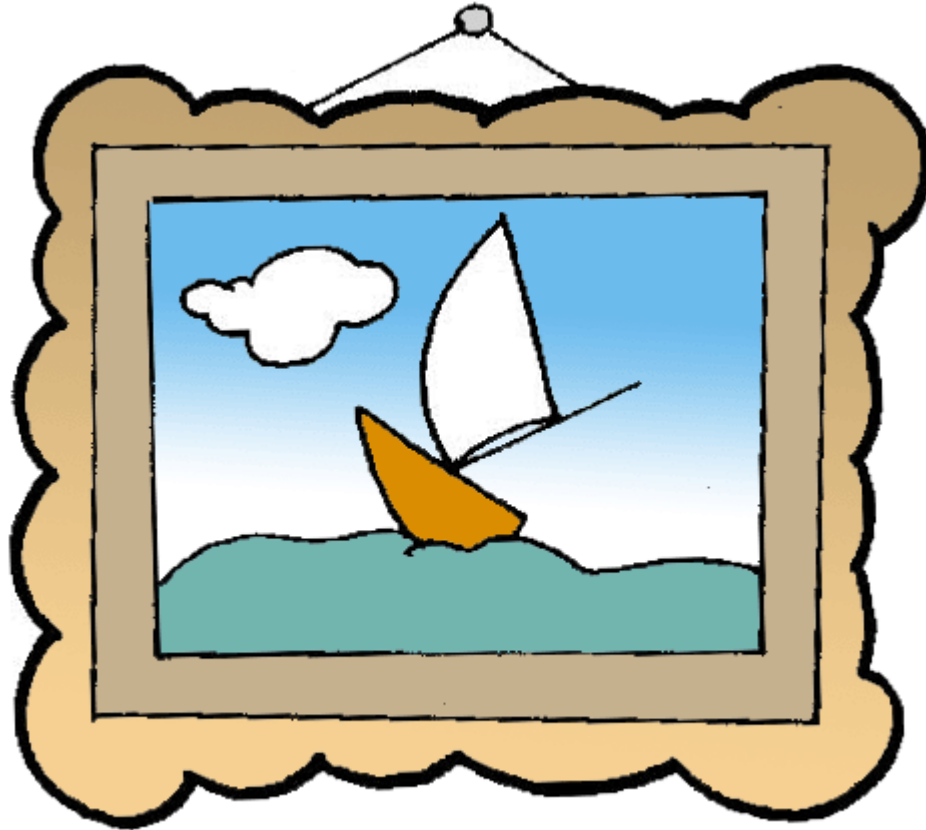
regar las plantas



bañera - tina



cuadro



estante - libros



sacudir los muebles



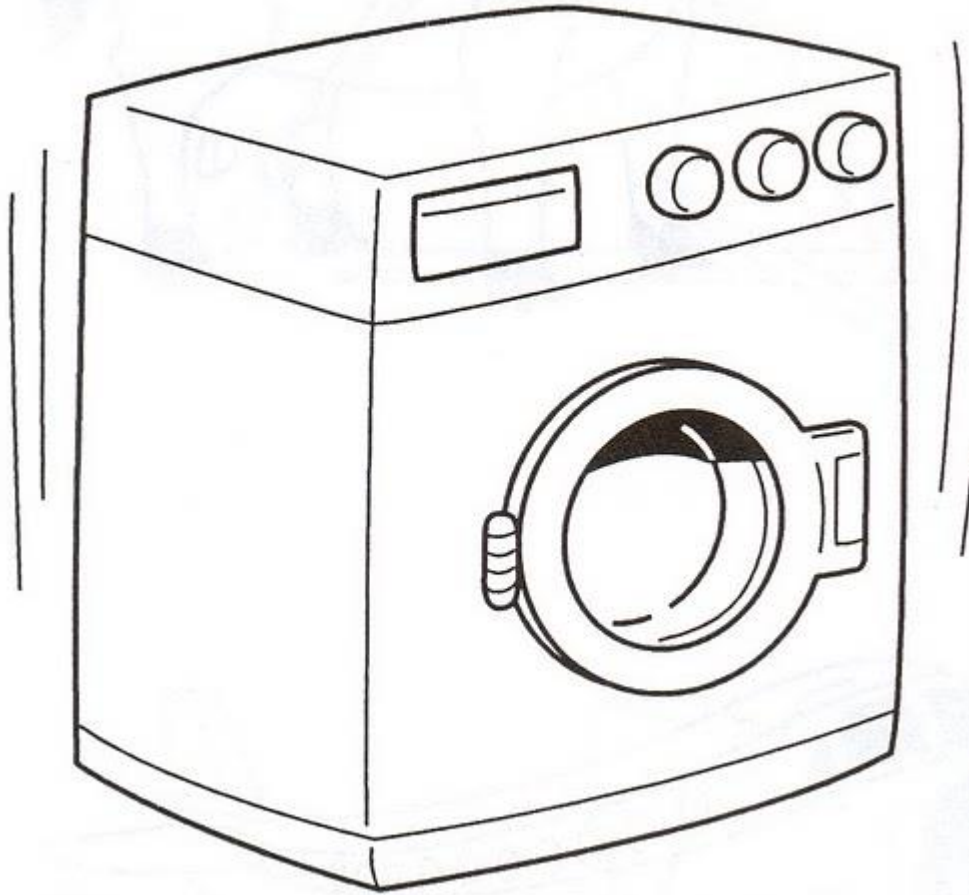
barrer



techo



lavadora



piso



manos



ventana

