



Hi, I'm Jill!



Dusty Road Jerseys

Meet Jill!

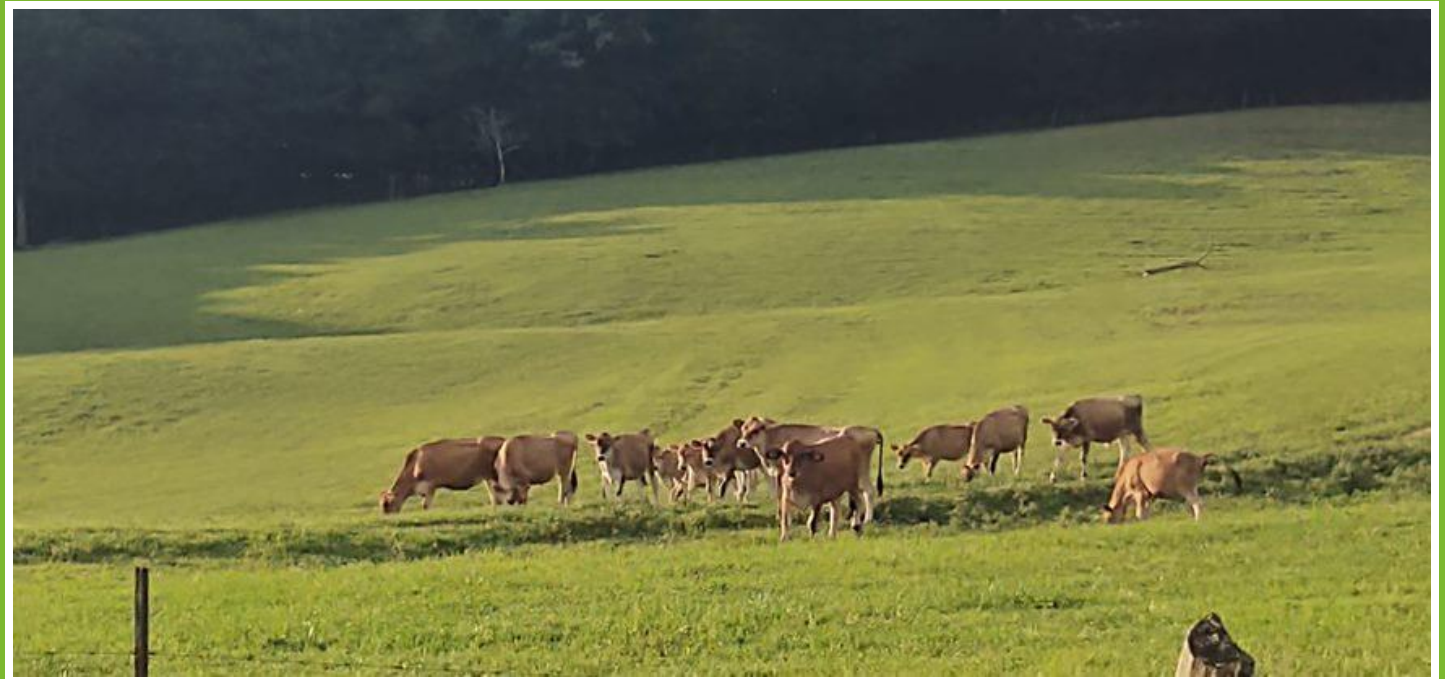


THE DAIRY ALLIANCE



Meet Farmer Matt

Dusty Road Jerseys is operated by Matt and Amanda Baldwin and their son, Bryson in Statesville, North Carolina. Their 160-acre dairy farm was established in 1980. Here they raise about 200 dairy cows and 135 calves and heifers. Below is a pasture that Jill will spend time in, in the future!



Jill



Name: Jill

Birthdate: September 14, 2022

Sire: Ensign

Dam: Jillian

Height @ 2 Months: 31.5 inches

Weight @ 2 Months: 150 lbs.

Breed: Jersey

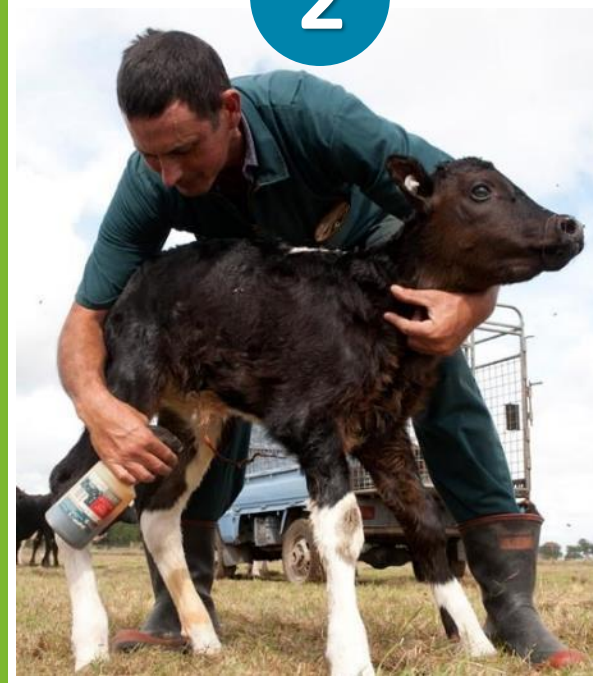
1



Within a few hours after birth, Jill drinks colostrum and takes her first few steps in life. Colostrum is vital to jump starting Jill's immune system.



2



Naval Dip

Jill's naval is dipped with iodine to protect her from getting an infection.

3

Water Bucket

Jill also always has fresh water to drink.





Jill lives with her mother in a pen for 3 days before moving to a calf hutch until weaning at 2 months.



Living in her own hutch allows her to build a strong immune system before joining the herd. She also gets fresh sawdust and straw to lay on every other day. This keeps Jill clean and warm.





Jill loves being happy and healthy!
She drinks a gallon of milk every day.



Dusty Road Jerseys **disbuds** horns using lidocaine (a pain reliever) and an iron to prevent horn growth for the safety of the other animals and humans.



Jill is given an **Ear Tag** at birth for identification. Her herd number is 2826. This is just like humans getting their ears pierced.



Hi, I'm Jillian. I'm Jill's mother!

Mother's Name: Jillian

Age: 3 years old

Height: 54 inches

Weight: 750 lbs.

Jillian produces 65 pounds or about 8 gallons of milk everyday!

Jillian's job on the farm is to produce high quality milk for the Baldwin family to sell so it can be made into fluid milk and other dairy products for you to consume.

What are your favorite dairy products?



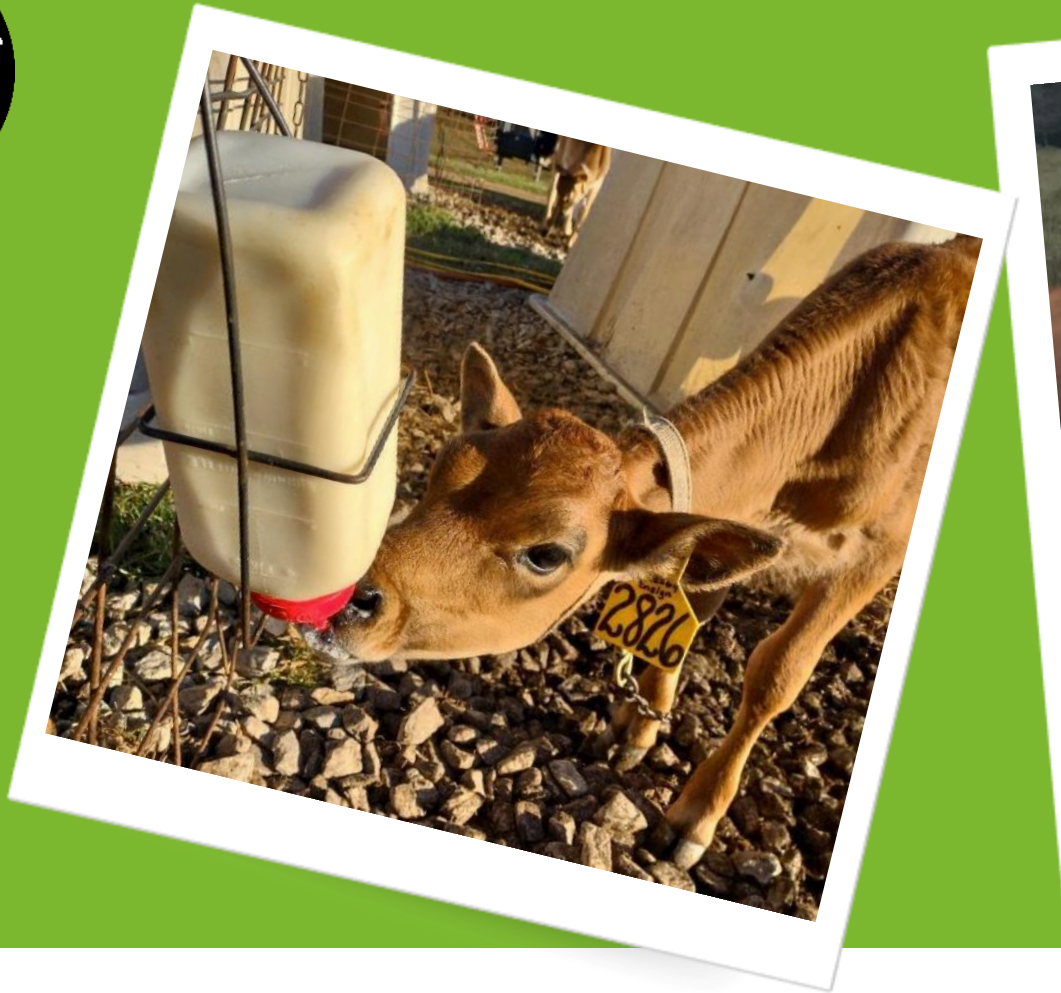
This is the pasture where Jillian and her herdmates live.



Jillian has access to water all day, every day. On average, cows drink about 40 gallons of water a day. That is about a bathtub full of water!



This is the feed alley. Farmer Matt gives Jillian fresh feed every day. Cows eat about 80 pounds of food each day!



94% of dairy farms across the country are family owned and operated just like the Dusty Road Jerseys. Dairy farming is a family affair, with a lot of love, hard work and perseverance put in to take good care of their cows. Jill is well-loved by them all!



Dusty Road Jerseys

