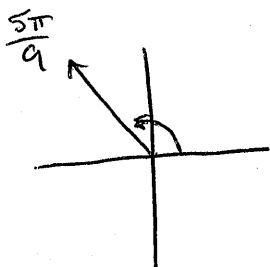


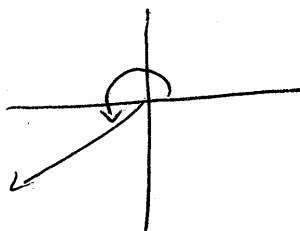
Radians and Quadrants

Sketch each angle in the appropriate quadrant.

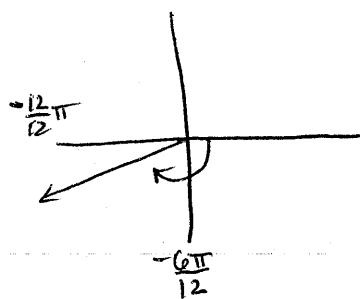
1) $\frac{5\pi}{9}$ Q2



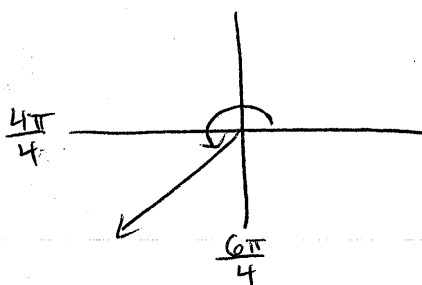
2) $\frac{10\pi}{9} = 1\frac{1}{9}\pi$ Q3



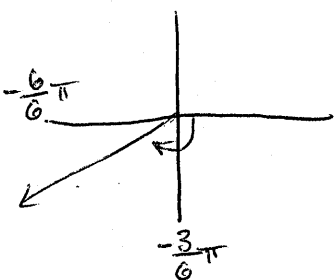
3) $-\frac{11\pi}{12}$ Q3



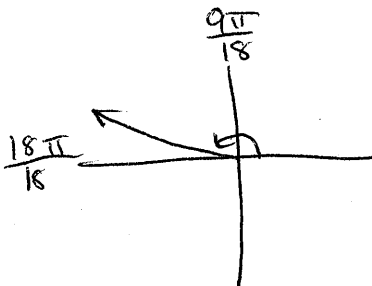
4) $\frac{5\pi}{4} = 1\frac{1}{4}\pi$ Q3



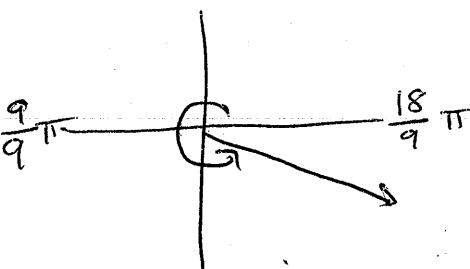
5) $-\frac{5\pi}{6}$ Q3



6) $\frac{17\pi}{18}$ Q2



7) $\frac{17\pi}{9} = 1\frac{8}{9}\pi$ Q4



8) $\frac{17\pi}{12} = 1\frac{5}{12}\pi$ (A little less than $1\frac{1}{2}\pi$)

