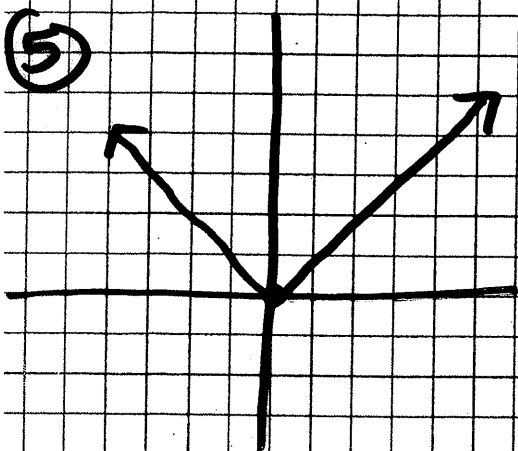
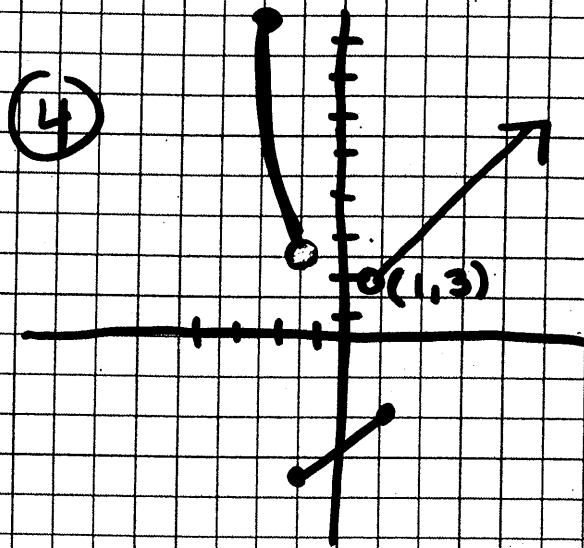
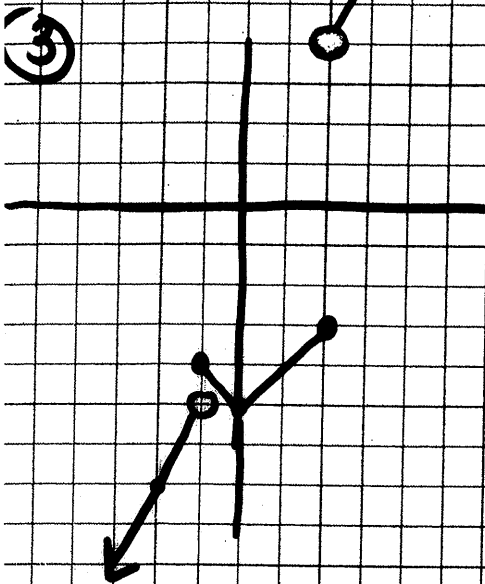
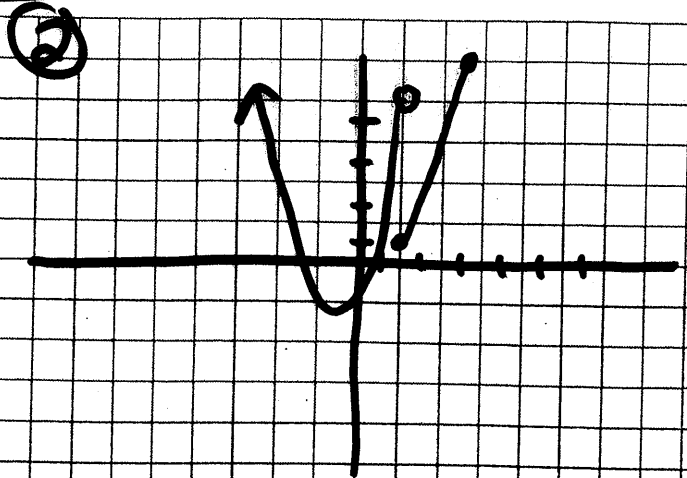
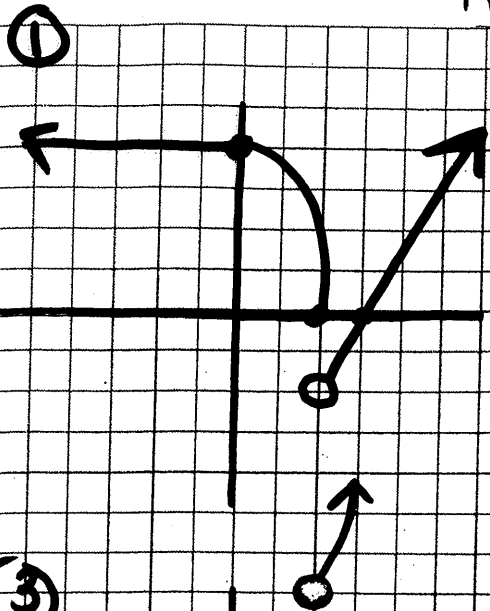


Piecewise Solutions



1) 4, 1.75, 0.4

2) -1, 10, undefined

3) -5, -7.6, 2.5

4) undefined, -5, 15

5) 2.6, 0, 3.5

Key

A piecewise function is graphed for you. Identify the following characteristics.

Domain: $(-\infty, \infty)$ Range: $(-\infty, 4]$

Where is this piecewise function....

Increasing: $(0, 4)$ Decreasing: $(4, \infty)$

Constant: $(-\infty, -2)$

Identify the coordinates of the....

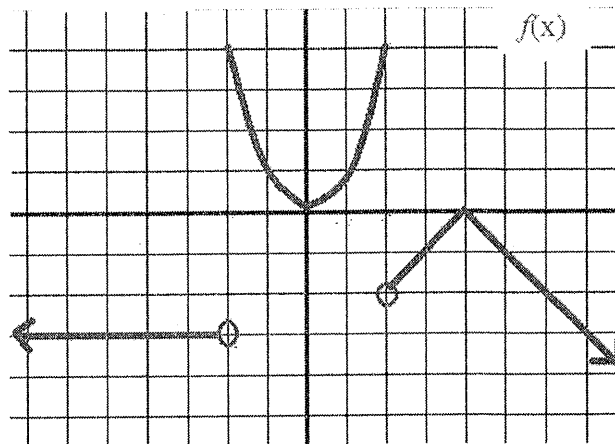
x-intercepts: $(4, 0)$ y-intercepts: $(0, 0)$

Evaluate:

$f(-2) = 4$ $f(x) = -3$ when $x = 7$ and

$f(4) = 0$ $(-\infty, -2)$

$f(2) = 4$ $f(x) = 1$ when $x = -1$ and 1



Domain: $(-\infty, \infty)$ Range: $[0, \infty)$

Where is this piecewise function....

Increasing: $(4, \infty)$ Decreasing: $(-\infty, 0)$

Constant: $(0, 4)$

Identify the coordinates of the....

x-intercepts: $(0, 0)$ y-intercepts: $(0, 0)$

Evaluate:

$f(4) = -2$

$f(2) = -2$ $f(x) = 1$ when $x = -1$ and 5

