

# 3-6 Practice

## Critical Points

1) Absolute Min:  $(6, -6)$   
Relative min:  $(1, -2)$   
Relative max:  $(-2, 1)$

2) Absolute min:  $(-2, 0)$

3) Absolute Max:  $(-1, 3)$

4) Relative max:  $(0, 2)$   
Relative min:  $(2, -2)$

5)  $x = 3$  minimum  $(3, -8)$

6)  $x = 1$  minimum  $(1, -7)$

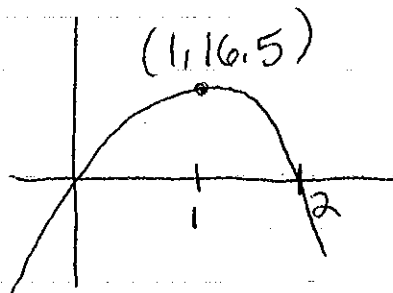
7)  $x = 0$  minimum  $(0, -5)$

8)  $x = 0$  maximum  $(0, 0)$

9)  $x = -1$  maximum  $(-1, 1)$

10)  $x = 0$  point of inflection  $(0, 4)$

11)  $(1, 16.5)$



After 1 second, the rocket reaches a maximum height of 16.5 feet