

25 April 2022

ADDENDUM #3

PROJECT: BSD Multi-Site Covered Play Structures

PROJECT NUMBERS: Architect's Project No. 21339



The following deletions and additions are hereby made a part of Bidding and Contract Documents, effective this date.

DRAWINGS

Item

1. Reference Drawing A220 COVERED PLAY STRUCTURE PLANS:
Delete: Sheet A220 in entirety.
Add: Sheet A220 in entirety, with Revision 1, attached.
2. Reference Drawing A320 COVERED PLAY STRUCTURE PLANS:
Delete: Sheet A320 in entirety.
Add: Sheet A320 in entirety, with Revision 1, attached.
3. Reference Drawing A330 COVERED PLAY STRUCTURE PLANS:
Delete: Sheet A330 in entirety.
Add: Sheet A330 in entirety, with Revision 1, attached.

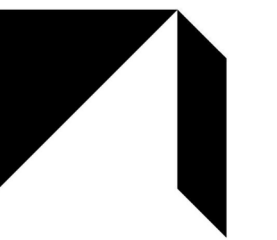
PRODUCT APPROVAL

Add the following to the list of acceptable manufacturers and products as noted:

1. Reference drawing 4/S701, Deck Type & Gauge:
 - a. Canam steel deck

Attachments: A220, A320, A330

END OF ADDENDUM #3



REVISIONS

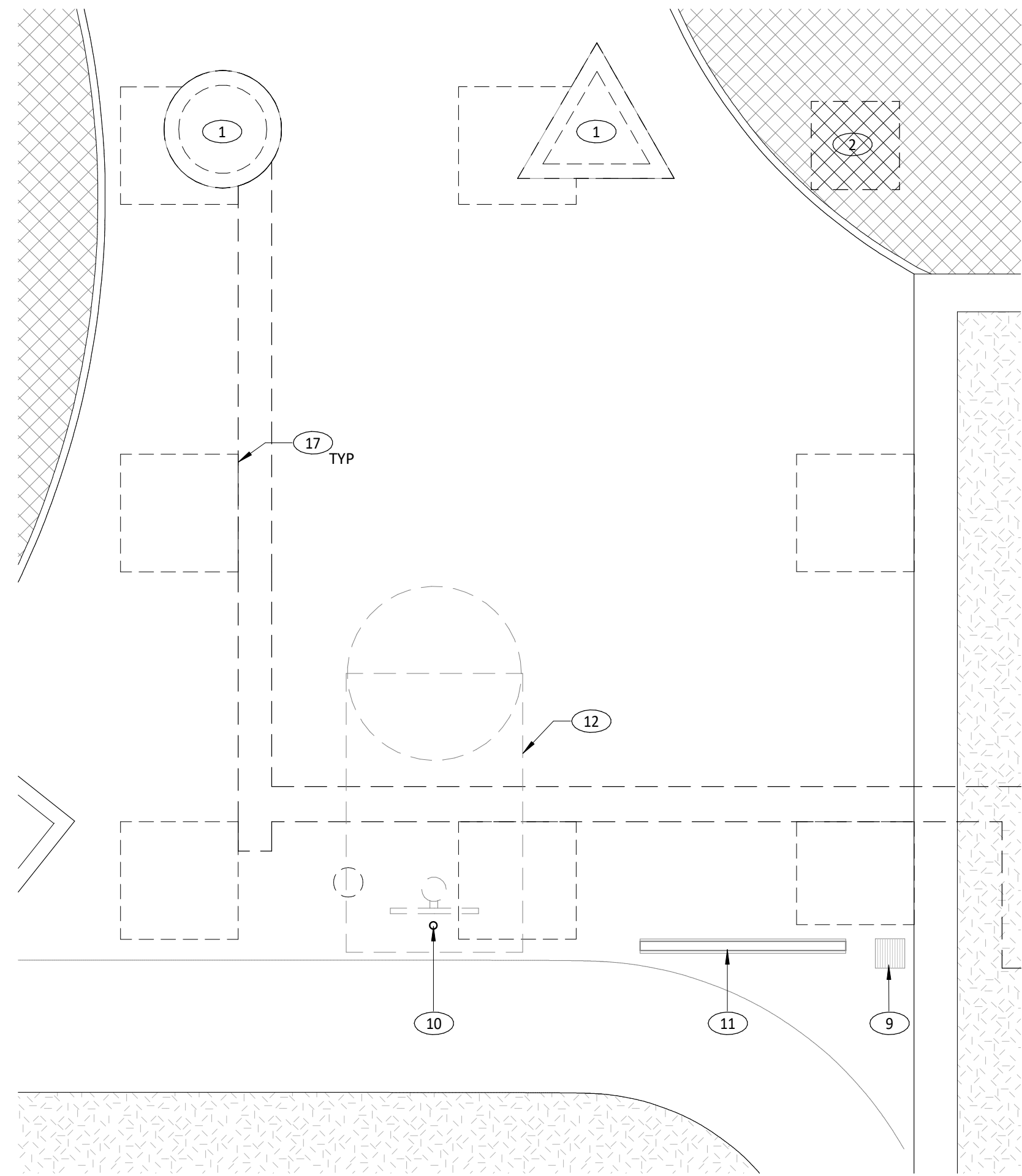
REV 1 4/25/2022

BSD MULTI-SITE COVERED PLAY STRUCTURES
FAIRFIELD ELEMENTARY SCHOOL
3455 ROYAL AVE. EUGENE, OREGON 97402
CONSTRUCTION DOCUMENTS

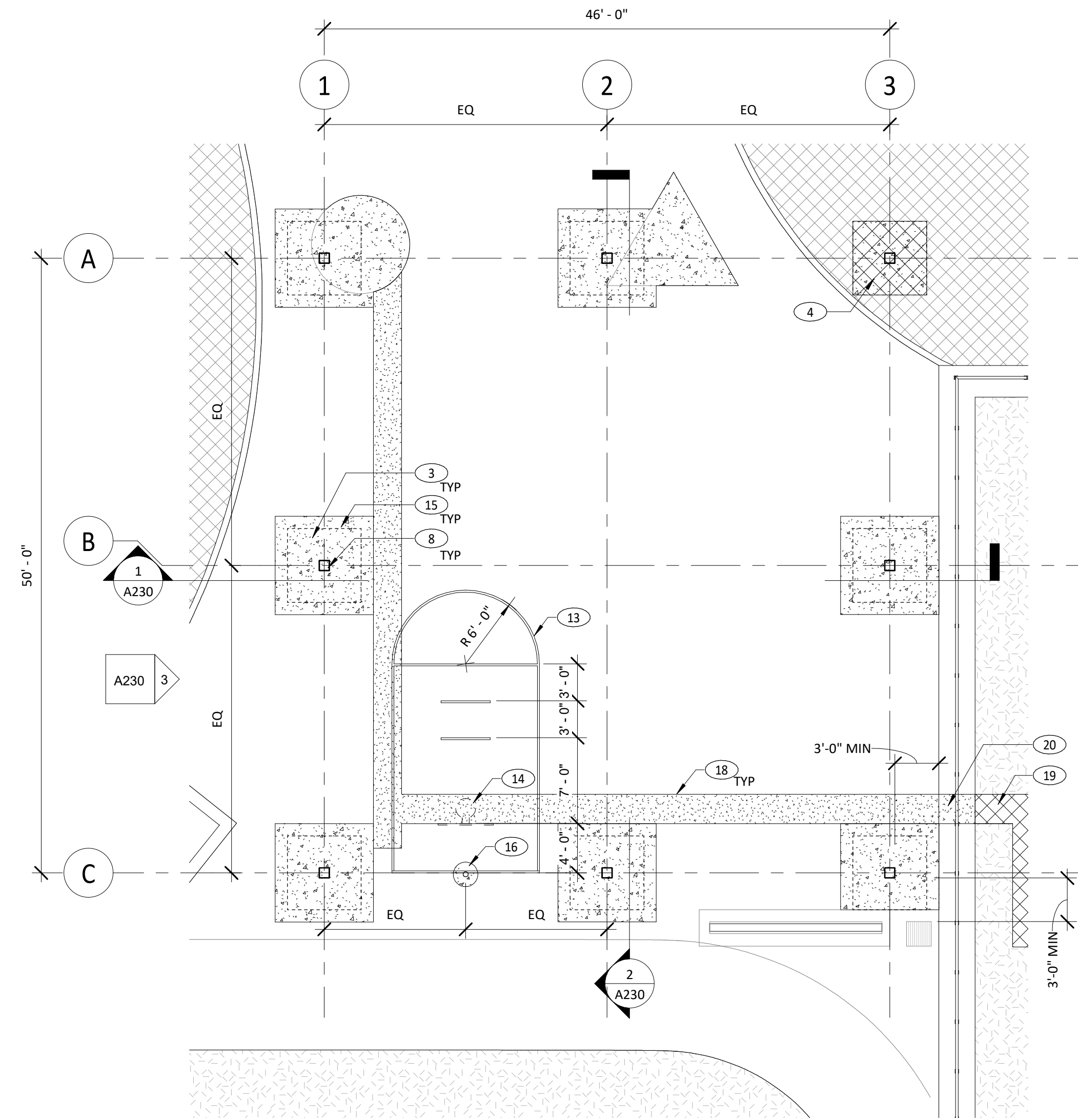
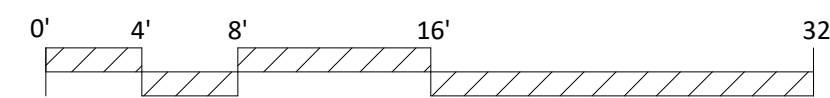
JOB NO: 21339
ISSUE DATE: 08 APRIL 2022

COVERED PLAY
STRUCTURE
PLANS

A220



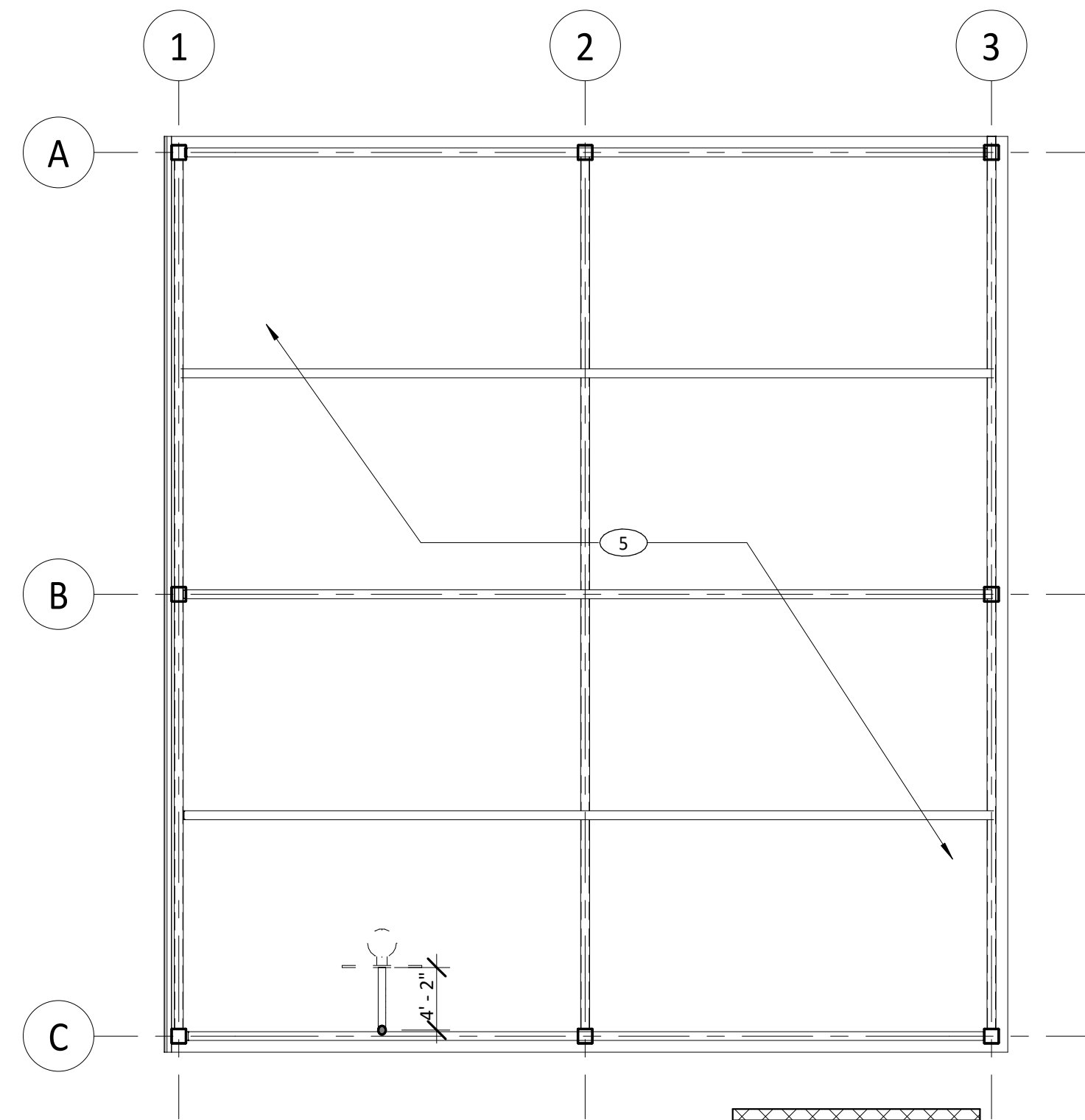
1 DEMOLITION PLAN
1/8" = 1'-0"



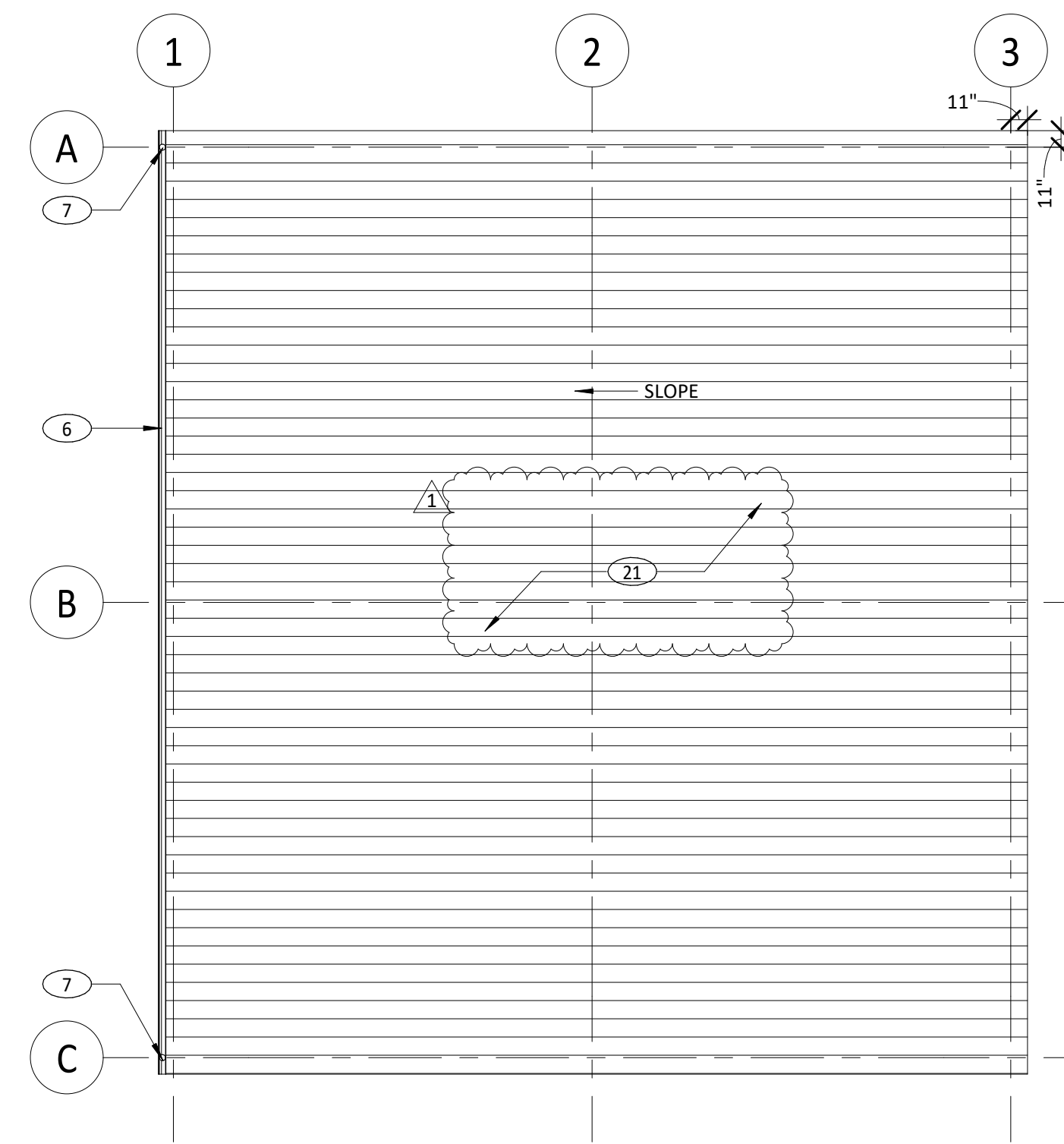
2 COVERED PLAY FLOOR PLAN
1/8" = 1'-0"

KEYNOTES

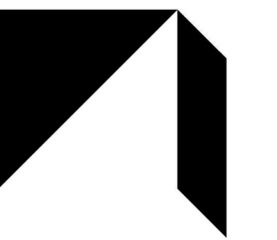
- 1 DEMOLISH RAISED CURB PLANTER AND ASSOCIATED LANDSCAPING, CAP IRRIGATION
- 2 DEMOLISH RUBBERIZED PLAY SURFACE AS REQ'D
- 3 (N) CONCRETE WHERE AC DEMOLISHED FOR (N) FOOTING, SEE CIVIL
- 4 PATCH RUBBERIZED PLAY SURFACE -RUBBERIZED PLAY SURFACE MATERIAL WILL BE OFCI, PROVIDE SUBGRADE PREP AS REQ'D
- 5 OPEN TO GALVANIZED STEEL ROOF FRAMING & DECKING
- 6 CONTINUOUS PREFIN SM GUTTER
- 7 PREFIN SM DOWNSPOUT, SEE ALSO CIVIL
- 8 GALVANIZED STRUCTURAL STEEL FRAME
- 9 (E) CATCH BASIN TO REMAIN
- 10 DEMOLISH BASKETBALL HOOP, SALVAGE TO OWNER -CUT STEEL POST FLUSH WITH GRADE -FILL BELOW-GRADE POST WITH CONCRETE
- 11 (E) CMU WALL TO REMAIN
- 12 PAINT (E) COURT MARKINGS BLACK
- 13 (N) COURT MARKINGS -2" WIDE WHITE STRIPE, UON
- 14 (N) BASKETBALL POLE, HOOP, & BACKBOARD
- 15 DASH LINE INDICATES (N) CONCRETE FOOTING BELOW, SEE STRUCTURAL
- 16 BASKETBALL HOOP POLE FOOTING, CENTER HOOP POLE IN FOOTING, DEPTH PER MFR REQUIREMENTS
- 17 DEMOLISH PAVING AS REQ'D FOR (N) FOOTINGS, TRENCHING, SEE ALSO CIVIL
- 18 (N) AC PAVING WHERE DEMOLISHED FOR (N) TRENCHING, SEE CIVIL
- 19 REPAIR LANDSCAPE THIS AREA, SEE CIVIL
- 20 REPAIR CONCRETE MOWSTRIP AND FENCE THIS AREA AS REQUIRED FOR TRENCHING, SEE CIVIL
- 21 STANDING SEAM METAL ROOF PANELS AND TRIM



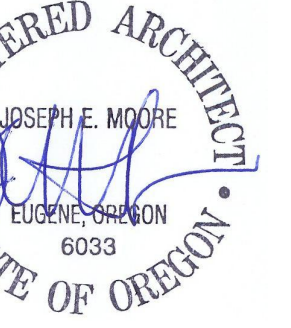
3 COVERED PLAY REFLECTED CEILING PLAN
1/8" = 1'-0"



4 COVERED PLAY ROOF PLAN
1/8" = 1'-0"



GMA ARCHITECTS
860 West Park Street / Ste 300
Eugene / Oregon / 97401
p 541.344.9157
gma-arch.com



REVISIONS

REV 1 4/25/2022

BSD MULTI-SITE COVERED PLAY STRUCTURES

IRVING ELEMENTARY SCHOOL
3200 HYACINTH ST. EUGENE, OREGON 97404
CONSTRUCTION DOCUMENTS

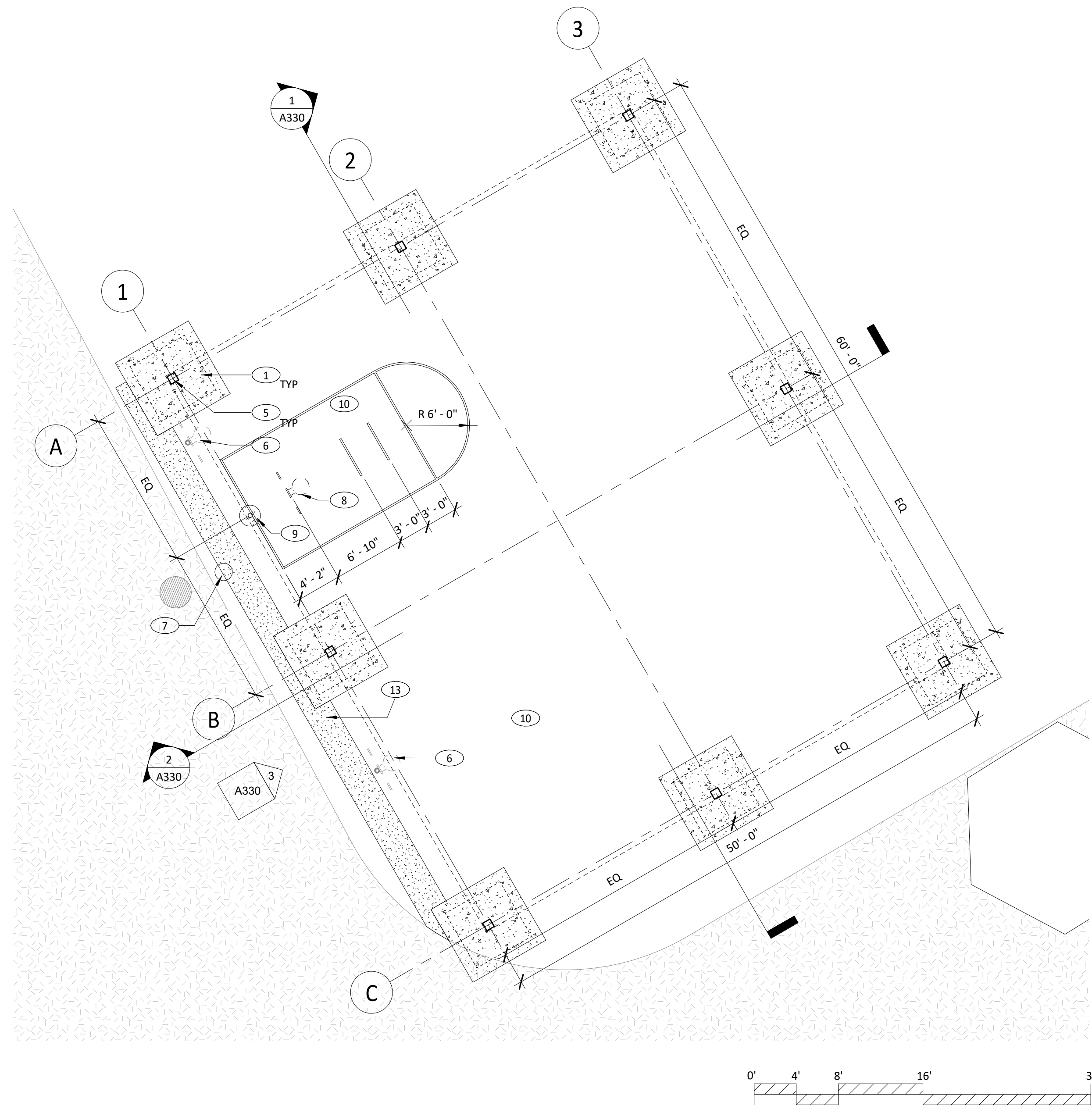
JOB NO: 21339
ISSUE DATE: 08 APRIL 2022

COVERED PLAY
STRUCTURE
PLANS

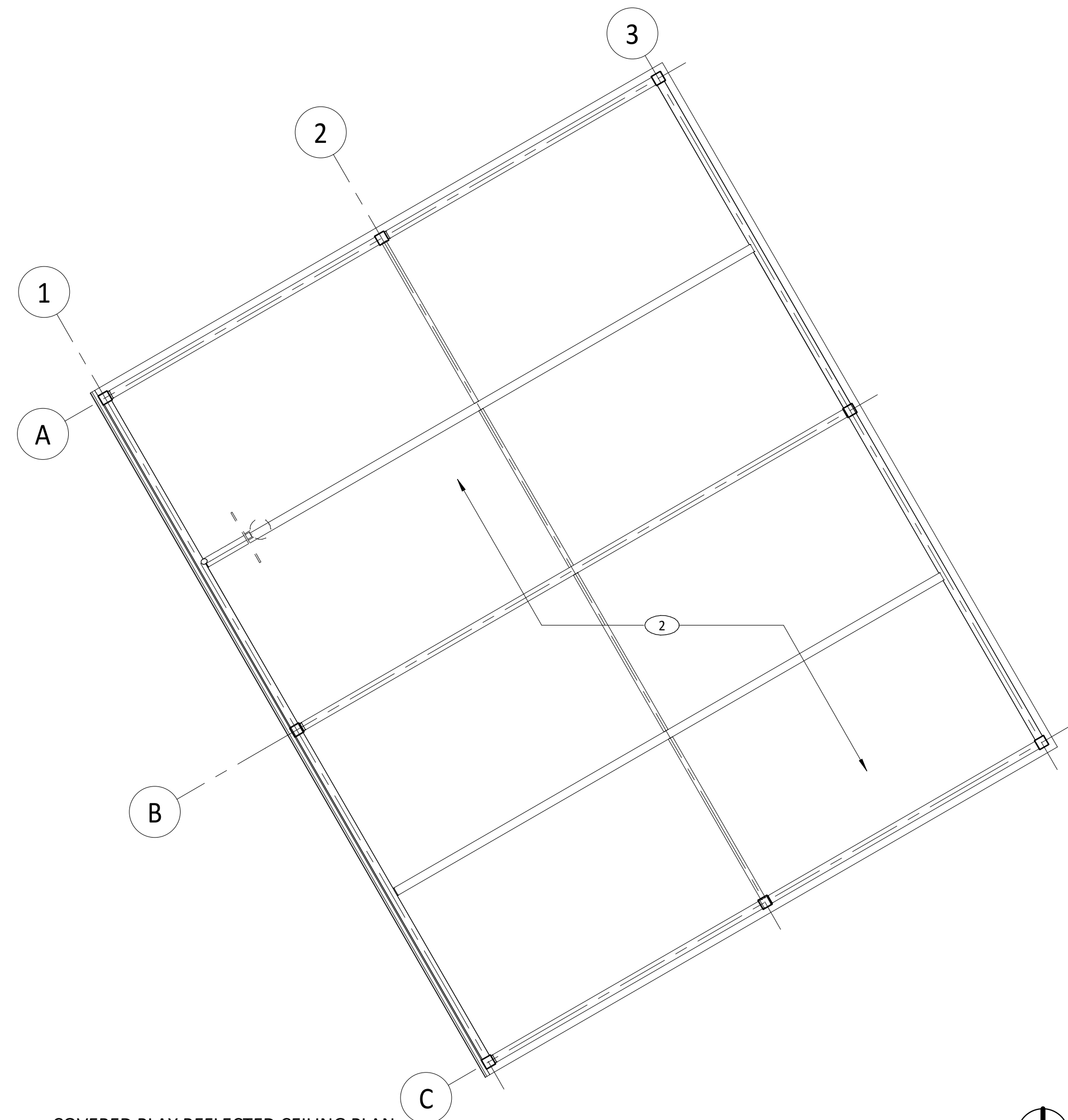
A320

KEYNOTES

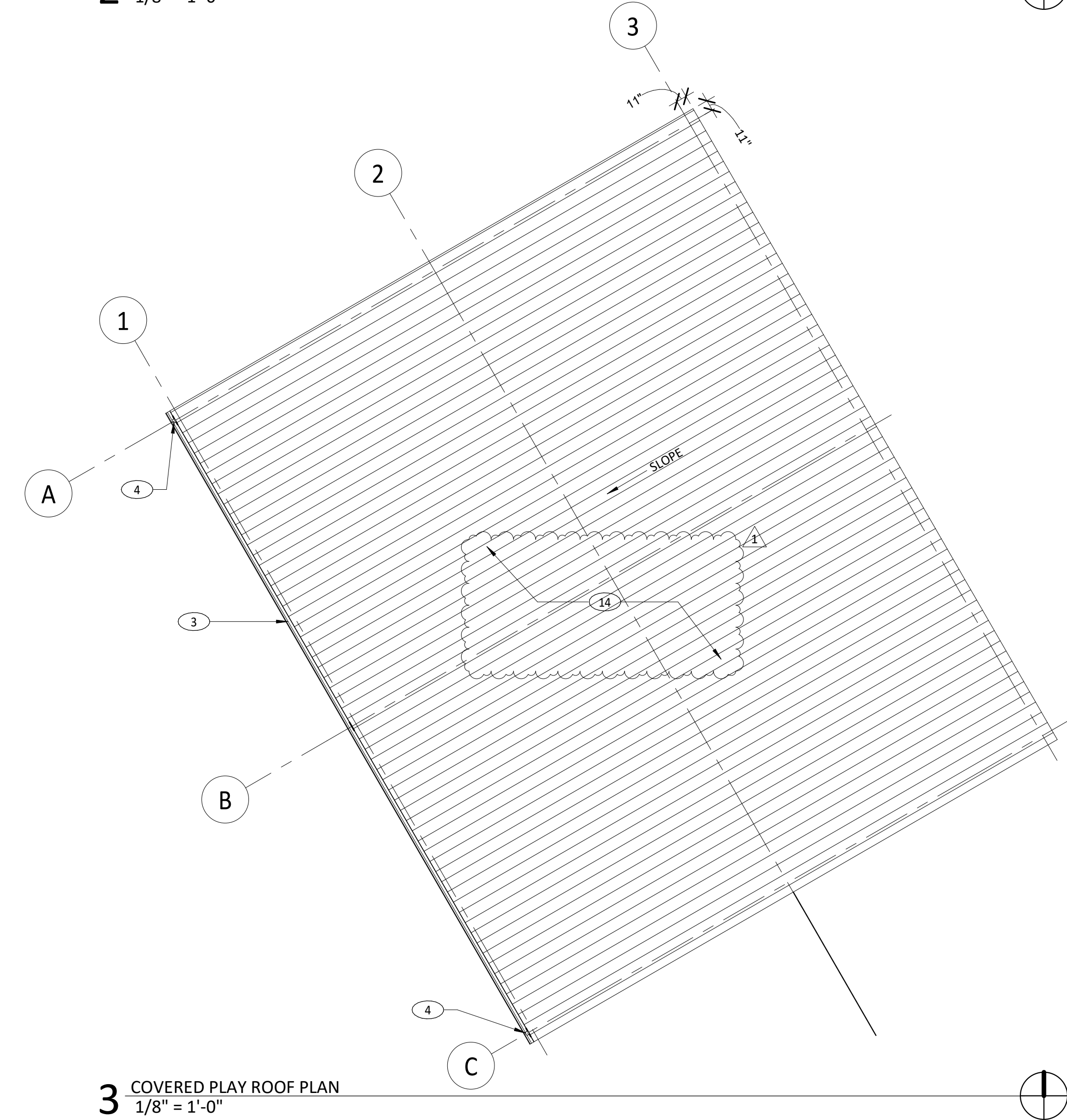
- 1 DEMOLISH AC PAVING, (N) CONCRETE FOOTING, SEE ALSO CIVIL
- 2 OPEN TO GALVANIZED STEEL ROOF FRAMING & DECKING
- 3 CONTINUOUS PREFIN SM GUTTER
- 4 PREFIN SM DOWNSPOUT, SEE ALSO CIVIL
- 5 GALVANIZED STRUCTURAL STEEL FRAME
- 6 DEMOLISH BASKETBALL HOOP, SALVAGE TO OWNER
- CUT STEEL POST FLUSH WITH GRADE
- FILL BELOW-GRADE POST WITH CONCRETE
- 7 (N) SEDIMENT BASIN, SEE CIVIL
- 8 (N) BASKETBALL POLE, HOOP, & BACKBOARD
- 9 BASKETBALL HOOP POLE FOOTING, CENTER HOOP POLE IN FOOTING, DEPTH PER MFR REQUIREMENTS
- 10 PAINT (E) BASKETBALL COURT MARKINGS UNDER STRUCTURE BLACK
- 11 (N) COURT MARKINGS
- 2" WIDE WHITE STRIPE, UON
- 12 DASH INDICATES (N) CONCRETE FOOTING BELOW, SEE STRUCTURAL
- 13 DEMOLISH AC PAVING, (N) AC PAVING AT TRENCH, SEE ALSO CIVIL
- 14 STANDING SEAM METAL ROOF PANELS AND TRIM



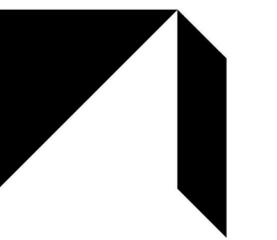
1 COVERED PLAY FLOOR PLAN
1/8" = 1'-0"



2 COVERED PLAY REFLECTED CEILING PLAN
1/8" = 1'-0"



3 COVERED PLAY ROOF PLAN
1/8" = 1'-0"



GMA ARCHITECTS
860 West Park Street / Ste 300
Eugene / Oregon / 97401
p 541.344.9157
gma-arch.com



REVISIONS

REV 1 4/25/2022

BSD MULTI-SITE COVERED PLAY STRUCTURES

IRVING ELEMENTARY SCHOOL
3200 HYACINTH ST. EUGENE, OREGON 97404
CONSTRUCTION DOCUMENTS

JOB NO: 21339
ISSUE DATE: 08 APRIL 2022

SECTIONS & ELEVATIONS

A330

