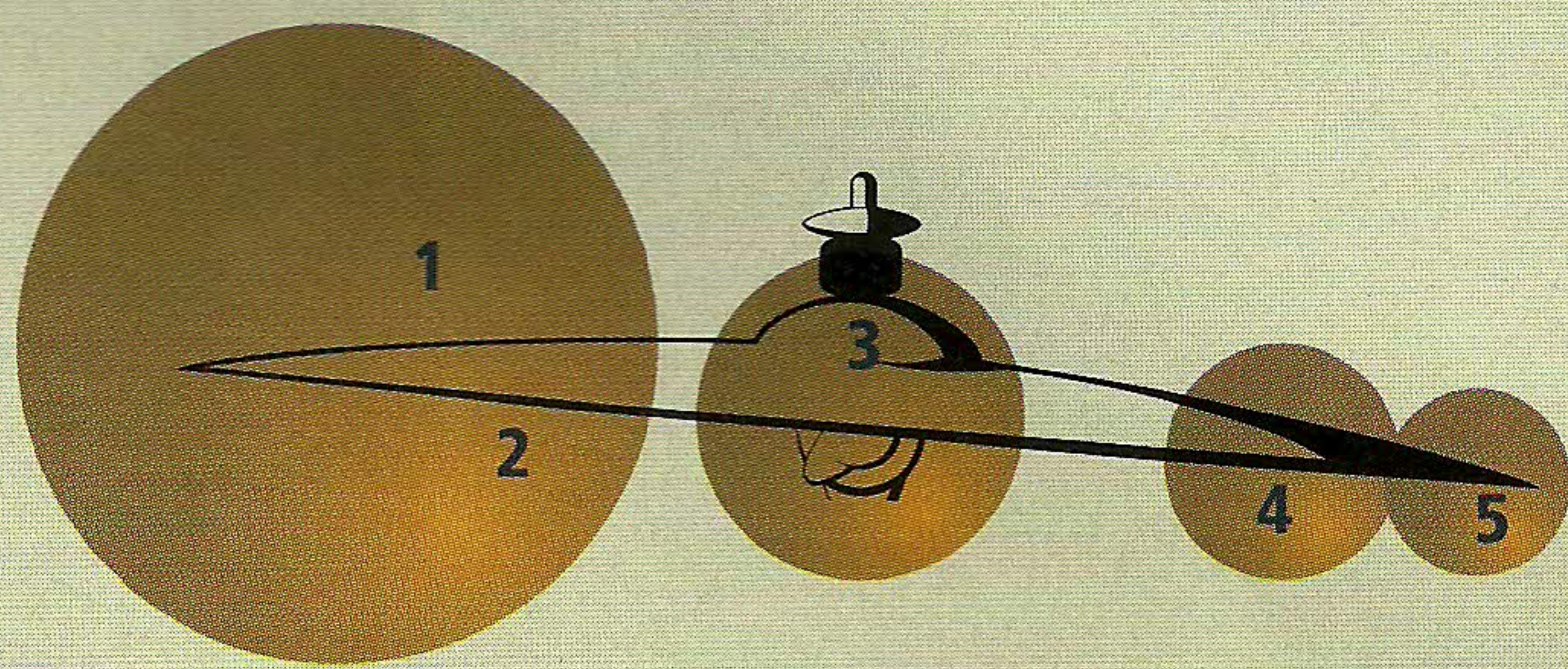


# Cymbals 101

## drumset cymbal set up



## cymbal anatomy



### 1 PROFILE

Degree of curvature from the cup to the edge. The profile of a cymbal affects its pitch and overtones. Higher profile cymbals will be higher in pitch and have fewer overtones. Flatter profile cymbals will be lower in pitch and have more overtones.

### 2 TAPER

Degree to which the cymbal changes in thickness from the cup to the edge. The design of the taper will contribute to the overall sustain and articulation of the cymbal.

### 3 BELL

The raised area in the center of the cymbal. The bell or "cup" determines the amount of overtones and sound projected by a cymbal. A larger bell will produce more overtones and sustain providing longer full-bodied sound. A smaller bell will produce less overtones and sustain providing a more articulate sound.

### 4 RIDE AREA

The area between the edge of the cymbal and the bell. The sound from this area does not "open up" immediately when struck, making easier to produce a more pronounced rhythmic patter or "ride pattern".

### 5 EDGE | CRASH AREA

The outer edge of the cymbal. This area is where the cymbal will respond the fastest, thus being the area where most drummers will strike to produce an instant crash response. This area will also produce the warmest sound when played with soft mallets for a suspended cymbal effect.



**CYMBALS - ESSENTIAL SET UP**

- a Zildjian HiHat 12-15"
- b Zildjian Crash or Crash Ride 16-20"
- c Zildjian Ride 18-24"

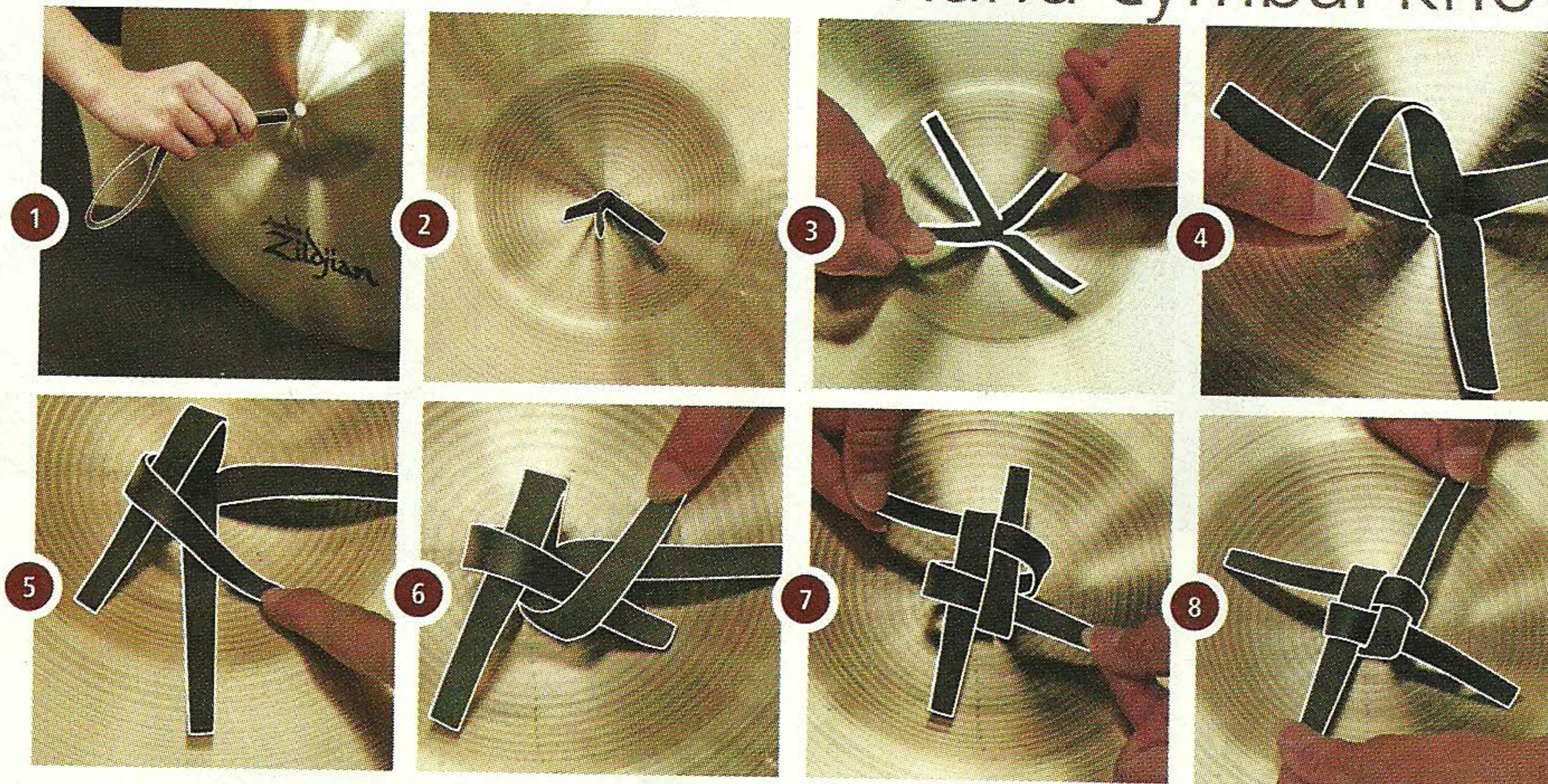
**CYMBAL ADD-ONS** are a great way to add color and texture to your set up and can consist of Splashes, Crashes, Chinas or FX Cymbals. The following A Zildjian models are pictured here.

- d 18" Medium Crash
- e 14" Fast Crash
- f 12" Fast Splash
- g 16" Thin Crash
- h 19" Rock Crash
- i 20" China High

**DRUMS**

- j Snare Drum
- k Mounted Tom
- l Floor Tom
- m Floor Tom
- n Bass Drum

hand cymbal knot



the art of finger cymbals

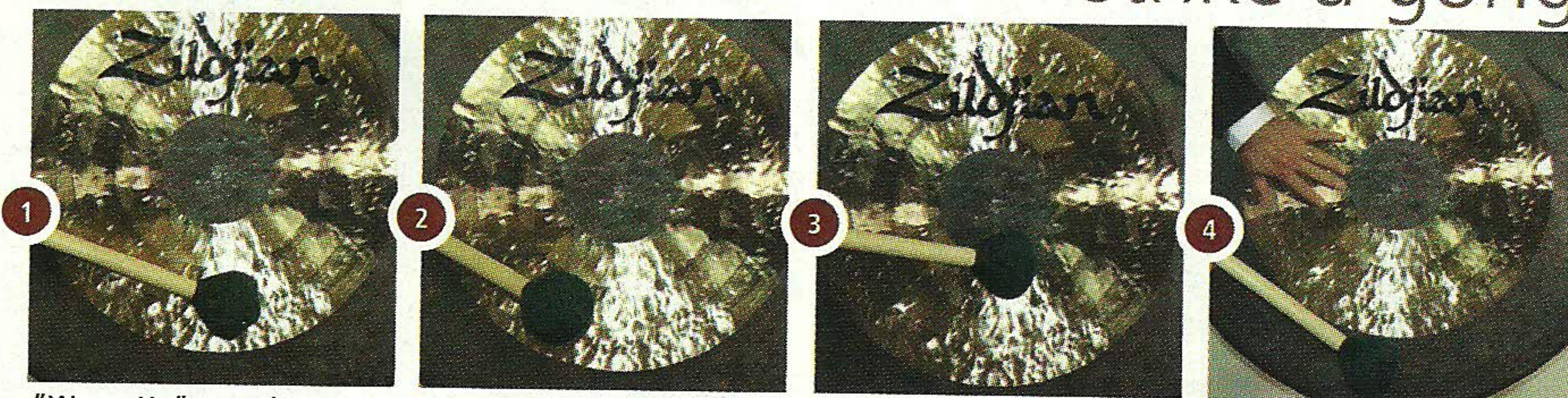


Pinch elastic straps to grip

Strike edge to inner surface OR Strike outer edges together

Never play like hand cymbals

strike a gong



"Warm-Up" gong by lightly tapping near edge

Prepare using appropriate 3"- 12" upstroke

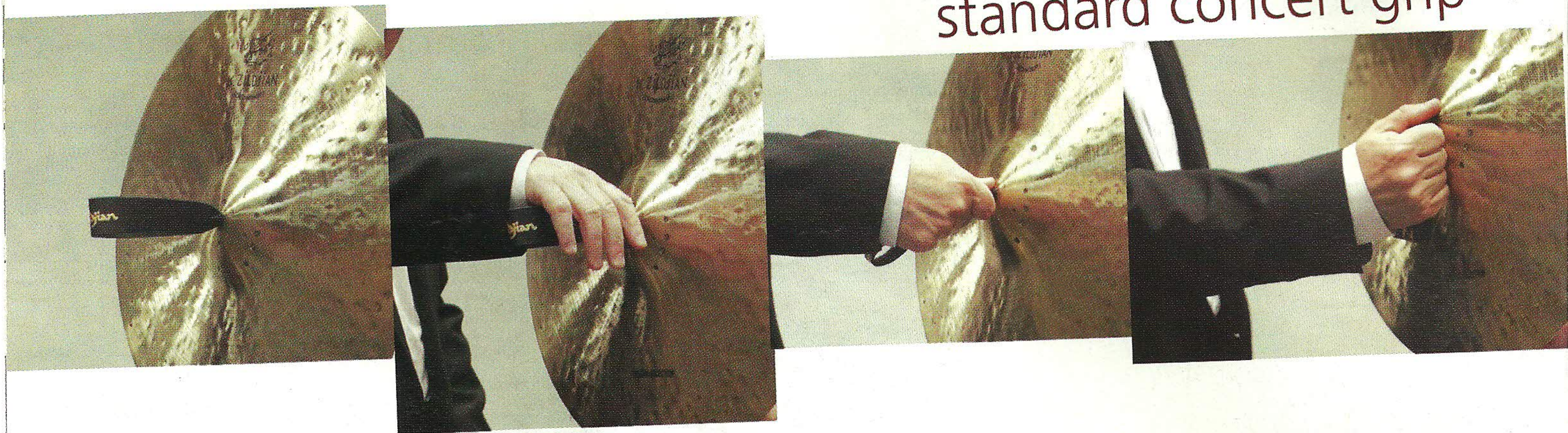
Strike gong just off center

Muffle using left hand

# Cymbals 101

## get a grip

standard concert grip



## time to crash

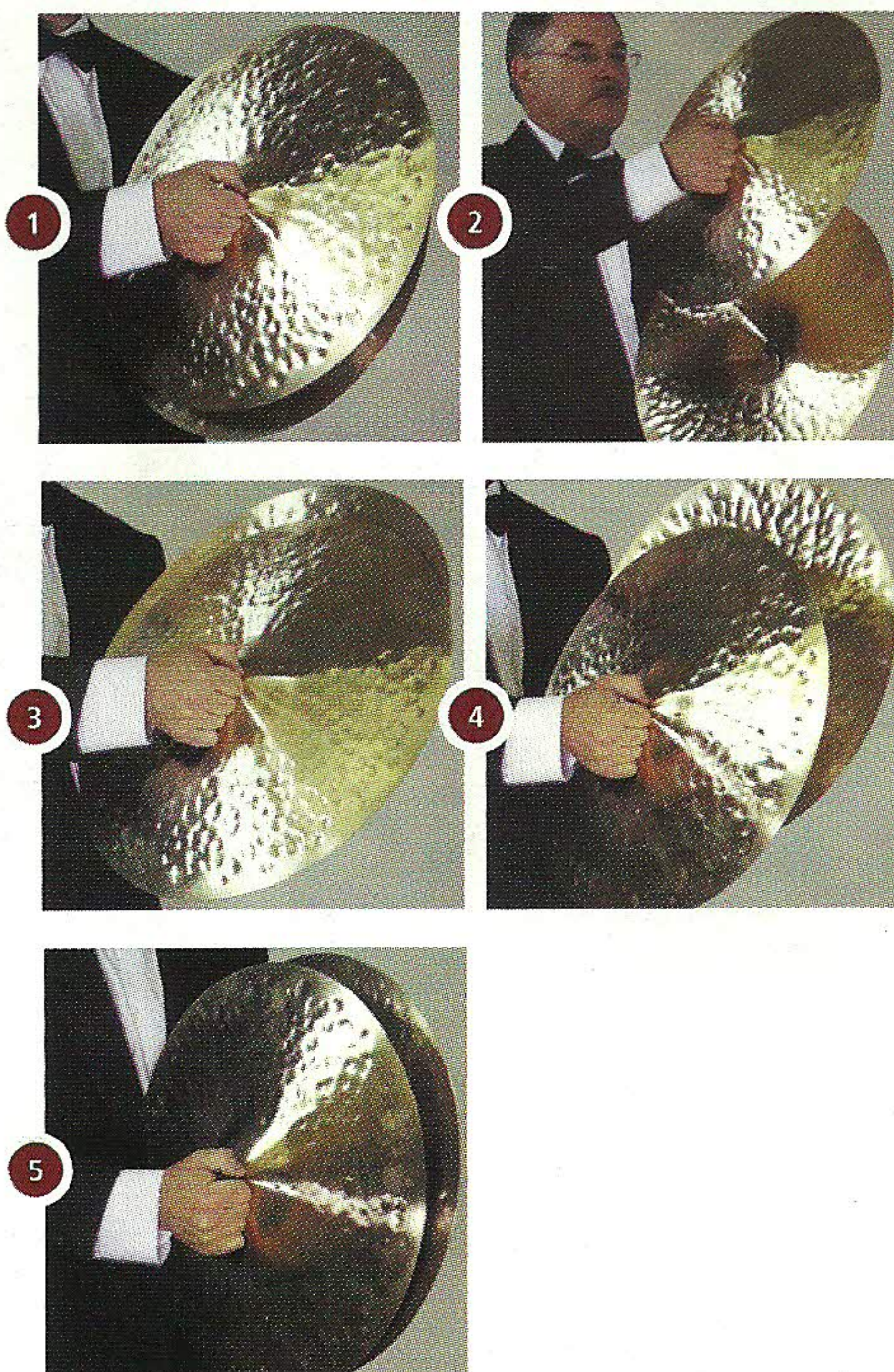
standard concert crashes

long crash



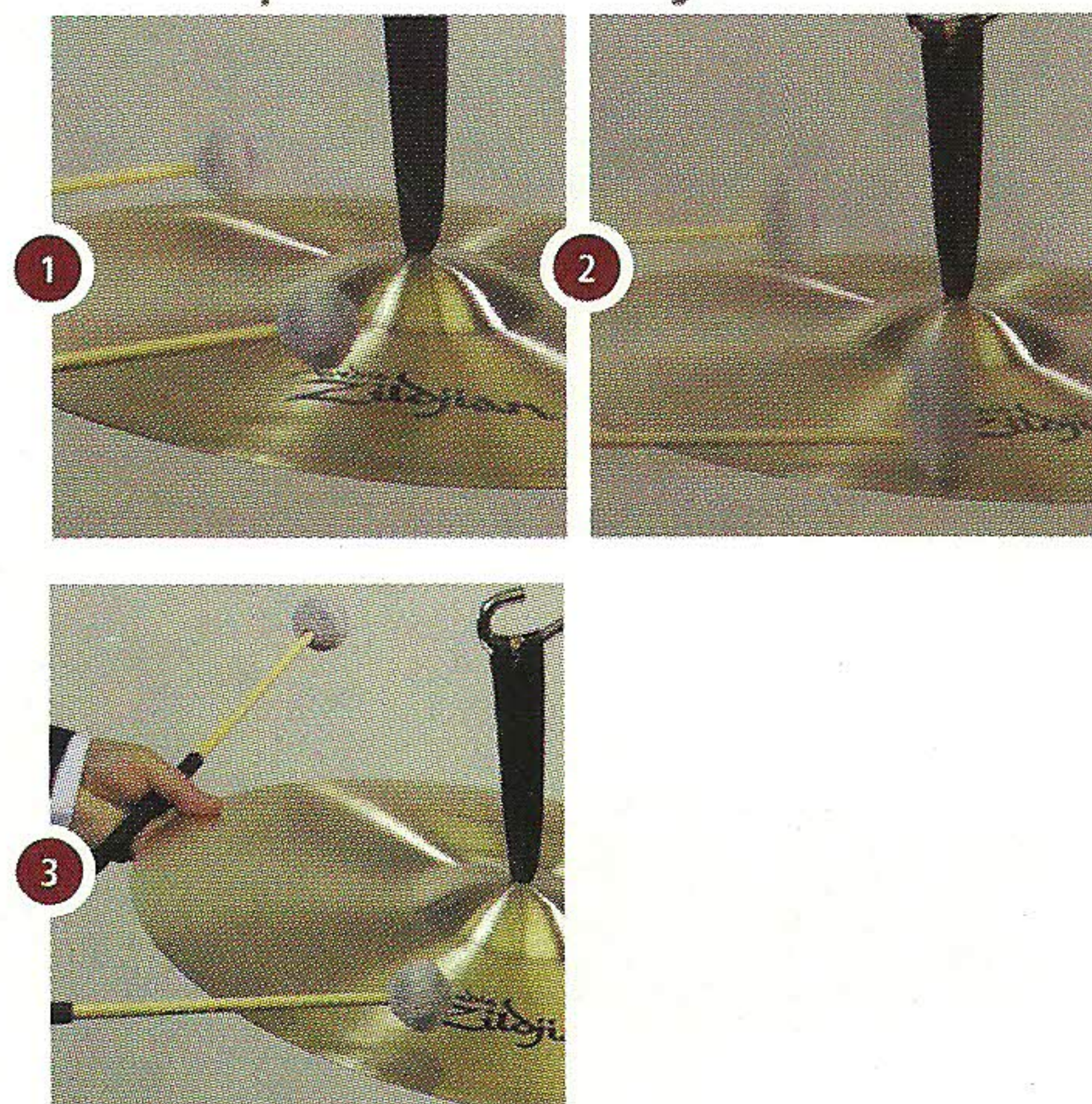
(1 & 2) Preparation (3 & 4) Attack (5 & 6) Release

short crash



(1 & 2) Preparation (3 & 4) Attack (5) Muffle / Dampen

suspended cymbal roll



(1) Preparation (2) Attack / Single Stroke Roll (3) Muffle / Dampen



## Elementary School

### BAND / ORCHESTRA

ZBT Band Pair  
14" ZBT14BP  
16" ZBT16BP

ZBT Crash  
16" ZBT16C

### DRUM SET

ZBT 4 Box Set ZBTB4P  
Includes  
13" HiHats (pair)  
14" Crash  
18" Crash Ride



## Junior High / Middle

### BAND / ORCHESTRA

Concert Stage Pair  
16" A0444  
18" A0454

Classic Orchestral Suspended  
16" A0417

### MARCHING

Z-MAC Pair  
16" A0475  
18" A0477

### DRUM SET

ZXT Pro Box Set ZXTB4P  
Includes  
14" HiHats (pair)  
16" Medium Thin Crash  
20" Medium Ride  
20" Cymbal Bag



## High School

### BAND / ORCHESTRA

Classic Orchestral Medium Heavy Pair  
16" A0753

Classic Orchestral Medium Light Pair  
18" A0759  
20" A0767

Classic Orchestral Suspended  
16" A0417

K Constantinople Suspended  
18" K1012

### MARCHING

Stadium Medium Pair  
16" A0468  
18" A0483

Stadium Medium Heavy Pair  
19" A0473  
20" A0497

### DRUM SET

K Zildjian Crash Ride  
18" K0808

A Zildjian Box Set A0912  
14" HiHats (pair), 16" Crash, 20" Ride,  
22" Cymbal Gig Bag

# CYMBAL, ACCESSORY & DRUMSTICK



## College / University

### BAND / ORCHESTRA

K Constantinople Vintage Med. Heavy Pair  
16" K1136

K Constantinople Medium Light Pair  
18" K1000

Classic Orchestral Medium Light Pair  
20" A0767

Classic Orchestral Medium Pair  
17" A0781

Classic Orchestral Suspended  
16" A0417

K Constantinople Suspended  
18" K1012  
20" K1014

### MARCHING

Stadium Medium Heavy Pair  
16" A0487  
18" A0495  
19" A0473  
20" A0497

### DRUM SET

Big Band  
A Zildjian Fast Splash  
8" A0271

K Mastersound HiHats (Pair)  
14" K0909

K Dark Crash Medium Thin  
16" K0913

K Custom Hybrid China  
19" K1220

K Constantinople Medium Ride  
20" K1016

### Combo

K Light HiHats (Pair)  
14" K0812

K Dark Crash Thin  
15" K0901

Azuka Latin Multi-Crash Hand & Stick  
15" A20015

### EFFECTS & ACCESSORIES

Leather Straps (2 pr.)	P0750
Orchestral Felt Pads (2 pr.)	P0756
22" Oriental Wind Gong	P0549
Finger Cymbals - Thin (pr.)	P0773
20" Cymbal Bag	P0729

### STICKS / MALLETS / BRUSHES

<b>Drumsticks</b>	
7A Wood Tip Natural	7AWN
General Orchestral Sticks	GOWN
<b>Mallets</b>	
Wind Gong	SDMWGM
Cymbal, Natural	SDMCMN

### EFFECTS & ACCESSORIES

Leather Straps (4 pr.)	P0750
Leather Pads (4 pr.)	P0751
26" Traditional Gong	P0499
Gong Stand	P0560
Finger Cymbals -Thin (pr.)	P0773
Hand Cymbal Cradle	TCC
Suspended Cymbal Arm	TCA
22" Deluxe Cymbal Bag	P0733

### STICKS / MALLETS / BRUSHES

<b>Drumsticks</b>	
5A Nylon Natural	5ANN
or 5B Nylon Natural	5BNN
General Orchestral Sticks	GOWN
<b>Mallets</b>	
Gong Mallet	P0550
Cymbal, Natural	SDMCMN
<b>Brushes</b>	
Professional, Retractable	SDWBZB1
or Fixed Wire	SDWBF

### EFFECTS & ACCESSORIES

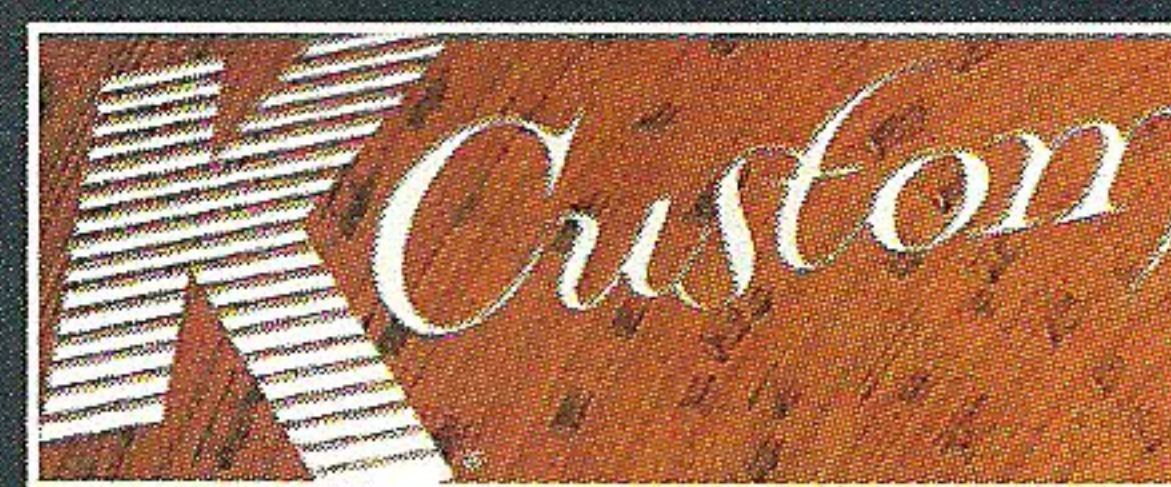
Leather Straps (7 pr.)	P0750
Leather Pads (7 pr.)	P0751
34" Traditional Gong	P0501
Gong Stand	P0560
Finger Cymbals (Thick)	P0771
Hand Cymbal Cradle	TCC
Suspended Cymbal Arm	TCA
22" Deluxe Cymbal Bag (2)	P0733
22" Deluxe Cymbal Rollerbag	P0650
High Octave Crotales	P0615
High Octave Crotales Bar	P0631
Crotales Carrying Bag	P0634
Z-Bag	TZBAG

### STICKS / MALLETS / BRUSHES

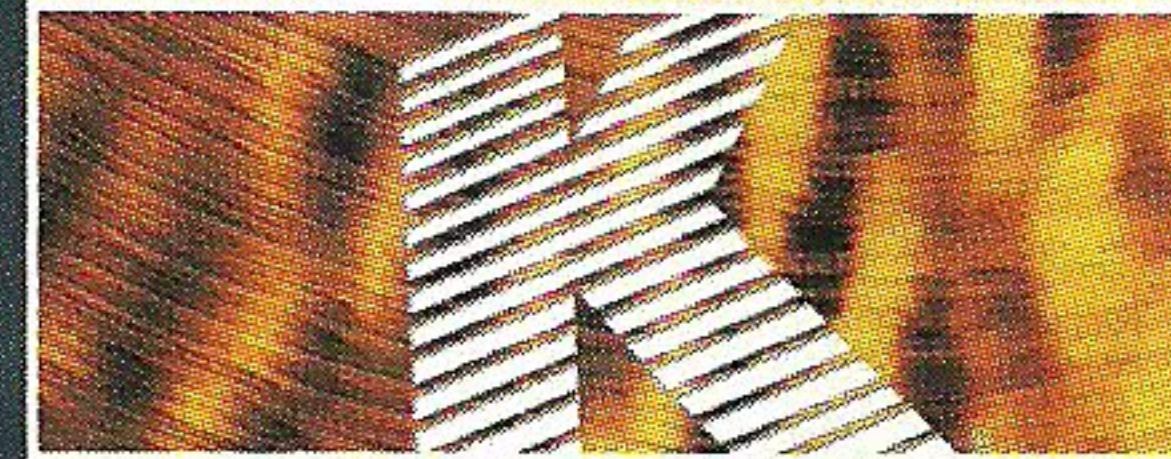
<b>Drumsticks</b>	
Jazz Wood Natural	JZWN
5A Wood Natural	5AWN
or 5B Wood Natural	5BWN
General Orchestral Sticks	GOWN
Mezzo 1 Multi-Rod	SDM1
<b>Mallets</b>	
Gong	P0550
Suspended Cymbal	SDMSC
<b>Brushes</b>	
Professional, Retractable	SDWBZB1
or Fixed Wire	SDWBF

## ZILDJIAN SOUND PALETTE

Choices in sound colors are often a very personal and subjective matter. Here at Zildjian, we proudly manufacture hundreds of products that cover a wide spectrum of musical applications. Our recommendations are general suggestions for teachers and players who need a starting point of reference for selecting Zildjian instruments and accessories. For additional guidance, we encourage you to seek the advice of an experienced percussion teacher, performer or authorized Zildjian retailer. For the latest news and detailed product information, be sure to visit [zildjian.com](http://zildjian.com).



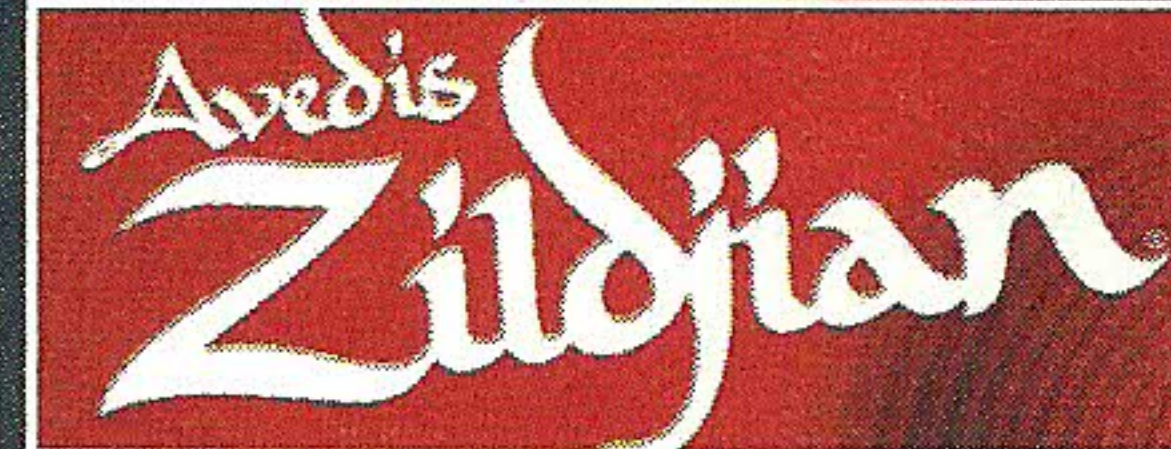
**K Custom**  
Rich, Dry  
+Complex



**K Zildjian**  
Dark, Warm  
+Expressive



**A Custom**  
Fast, Modern  
+Shimmering



**A Zildjian**  
Bright, Natural  
+Full-Bodied



**Z Custom**  
Loud, Raw  
+Aggressive



**FX**  
Ethereal, Creative  
+Atmospheric



**ZHT**  
Bold, Bright  
+Melodic



**ZXT**  
Clear, Powerful  
+Musical



**ZBT**  
Crisp, Clean  
+Defined

## RECOMMENDATION GUIDE

**Oriental China Trash**  
16" A0618

**A Custom China**  
18" A20529

**K Constantinople MediumThin Ride-High**  
20" K1115

**K Constantinople Flat Ride**  
20" K1128

### EFFECTS & ACCESSORIES

Leather Straps (8 pr.)	P0750
Leather Pads (8 pr.)	P0751
22" Oriental Wind Gong	P0549
34" Traditional Gong	P0501
Gong Stand	P0560
Finger Cymbals -Thin (pr.)	P0773
Finger Cymbals -Thick (pr.)	P0771
Hand Cymbal Cradle (2)	TCC
Suspended Cym. Arm (2)	TCA
22" Deluxe Cymbal Bag (2)	P0733
22" Deluxe Cymbal Rollerbag	P0650

High Octave Crotales	P0615
High Octave Crotales Bar	P0631
Low Octave Crotales	P0625
Low Octave Crotales Bar	P0630
Crotales Carrying Bag (2)	P0634
Z-Bag	TZBAG

### STICKS / MALLETS / BRUSHES

<b>Drumsticks</b>	
Jazz Wood Natural	JZWN
5A Wood Natural	5AWN
or 5B Wood Natural	5BWN
General Orchestral Sticks	GOWN
Mezzo 1 Multi-Rod	SDM1
Mezzo 2 Multi-Rod	SDM2
Timbale Sticks	TBWN
<b>Mallets</b>	
Gong	P0550
Suspended Cymbal	SDMCMN
<b>Brushes</b>	
Professional, Retractable	SDWBZB1
or Fixed Wire	SDWBF

STOP BY THE ZILDJIAN BOOTH AT PASIC AND PICK UP YOUR COPY OF THE COMPLETE "ZILDJIAN SCORE 08"