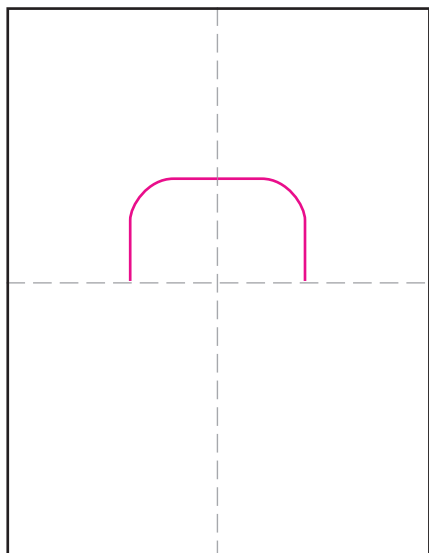
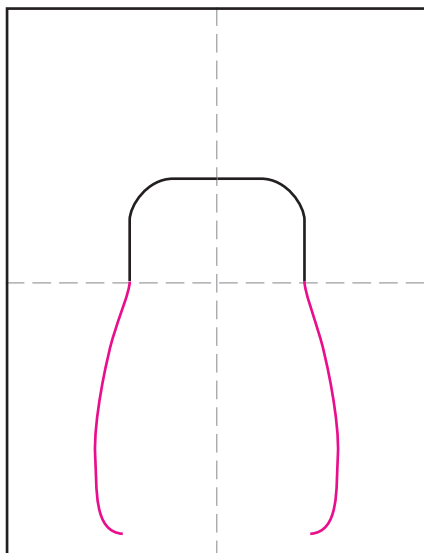


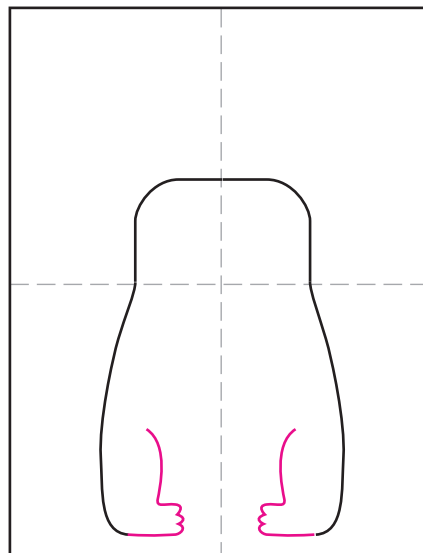
# Draw an Easter Bunny



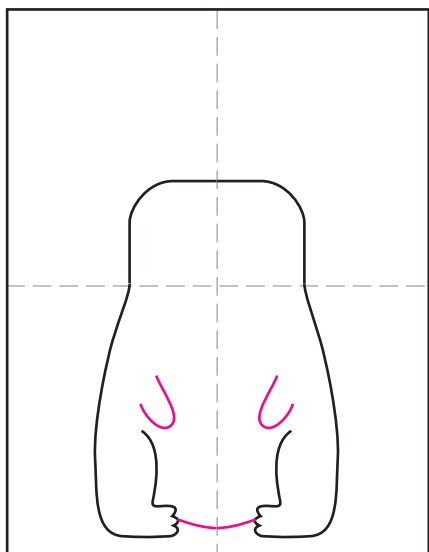
1. Fold to make guides. Draw head.



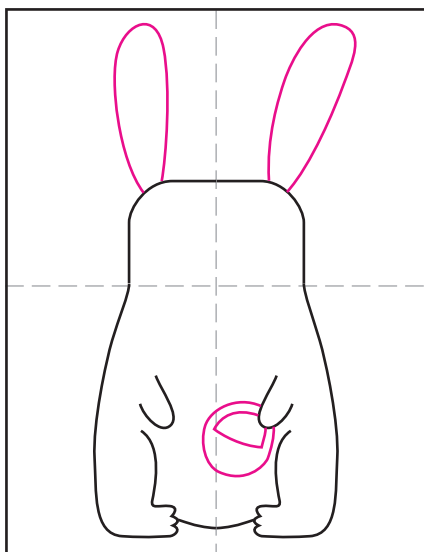
2. Add curved sides as shown.



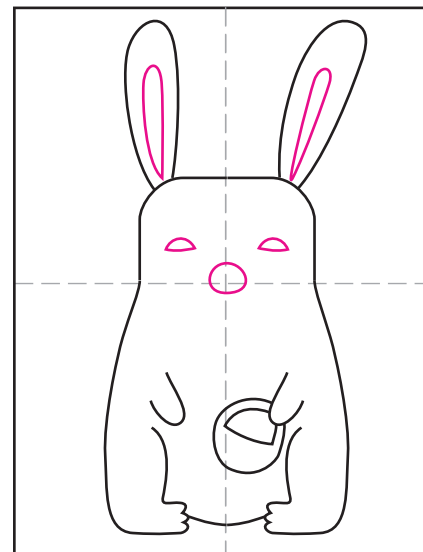
3. Draw the legs and toes.



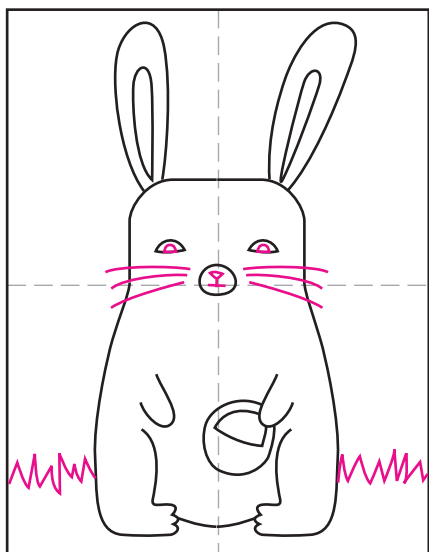
4. Add paws and belly line.



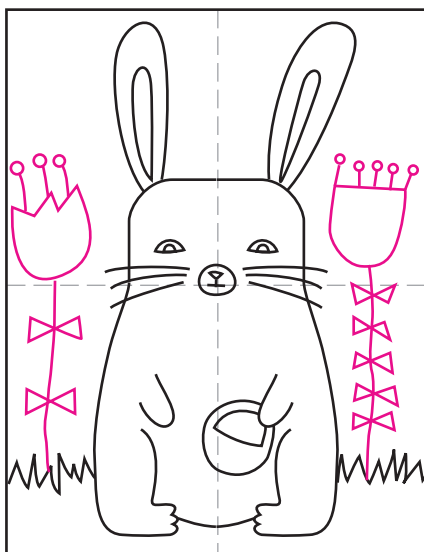
5. Draw basket and ears.



6. Draw inside ears and face.



7. Draw eyes, nose, whiskers, grass.



8. Finish with pretty flowers.



9. Trace with a marker and paint.