

Soderstrom Architects

WILLAMETTE HIGH SCHOOL - CTE BUILDING

BETHEL SCHOOL DISTRICT



WILLAMETTE HIGH SCHOOL

TRUTH IN MATERIALS

A RICHER LEARNING SPACE WHERE STUDENTS ARE ENCOURAGED TO STUDY THE SYSTEMS IN WHICH THEY OCCUPY, FOSTERING A GREATER UNDERSTANDING OF THE WORLD AROUND THEM.

- EXPOSED PIPING & DUCTING SYSTEMS
- EXPOSED STRUCTURE
- METAL PANELS AND WELDING
- CONCRETE FLOORING (GROUND FLOOR)



PLAYFUL + ENGAGING

A SPACE THAT ENCOURAGES CREATIVITY. STUDENTS PERFORM BETTER IN SPACES WHERE THEY FEEL ENGAGED AND WELCOME.

- BOLD COLOR MOMENTS AND WARM MATERIALS IN NON-TEACHING AREAS
- "SOFT" GATHER SPACES WITH ORGANIC ARRANGEMENTS
- MATERIAL CONTRAST THROUGHOUT

BLANK CANVAS

A SPACE FOR STUDENT WORK TO SHINE. MINIMAL, NEUTRAL INTERIORS PROVIDE THE PERFECT BACKDROP TO SHOWCASE STUDENT WORK THROUGHOUT.

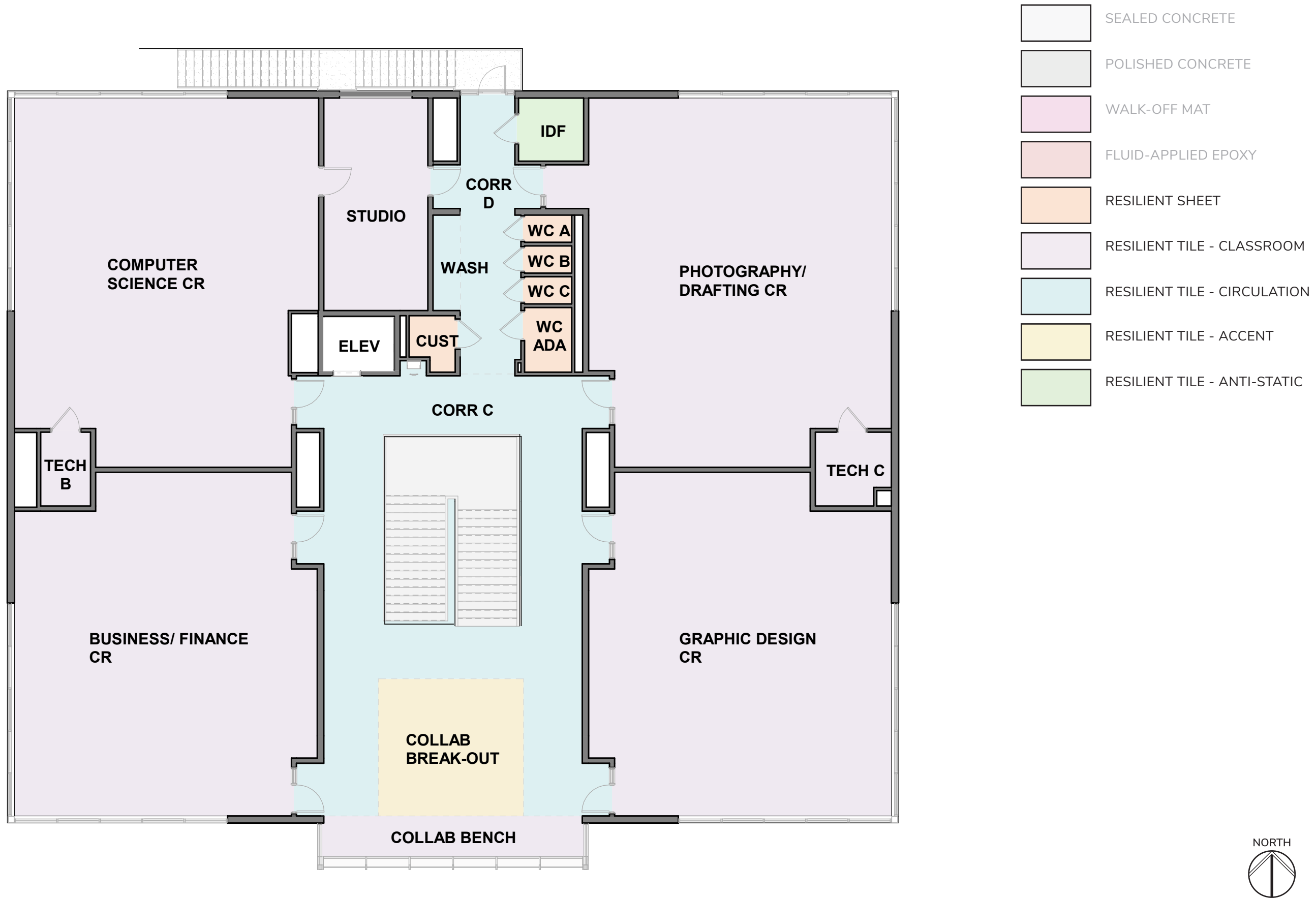
- COLOR USED SPARINGLY IN TEACHING SPACES
- BRIGHT, LIGHT AND NEUTRAL MATERIALS
- PLENTY OF TACKABLE SURFACE























INTERIOR VIEW
LEVEL 1 WATER CLOSETS









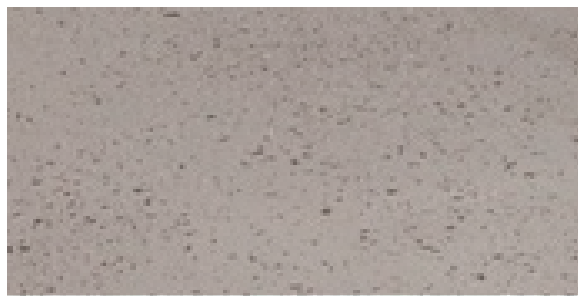
INTERIOR VIEW
CULINARY CLASSROOM-DINING ROOM



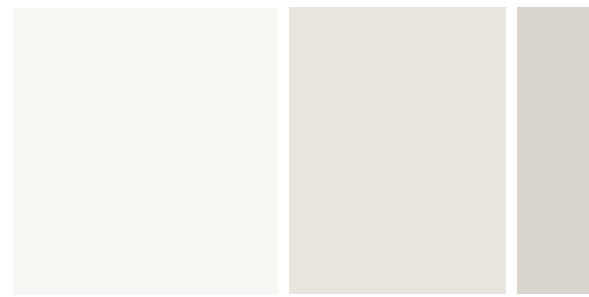




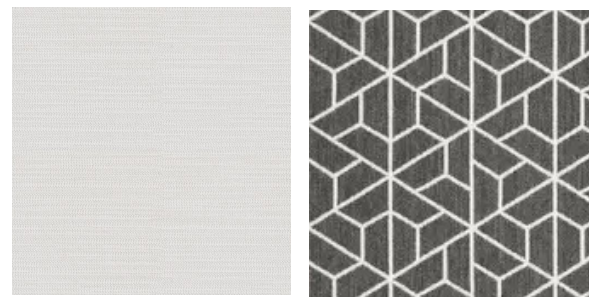




POLISHED CONCRETE FLOOR (LEVEL 1)

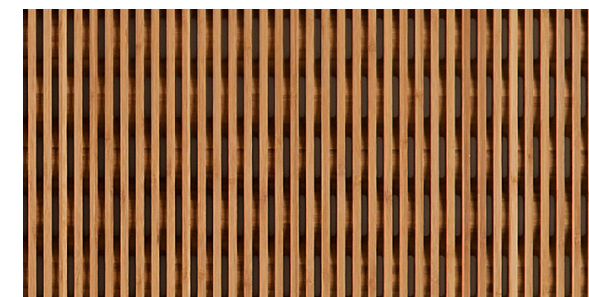


PAINT (FIELD AND ACCENTS)



TACKABLE SURFACE

BENCH FABRIC



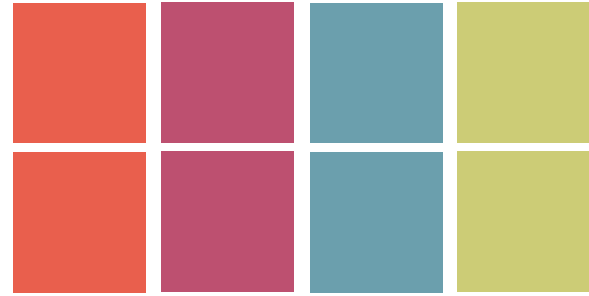
WOOD ACOUSTIC CEILING (ENTRY)



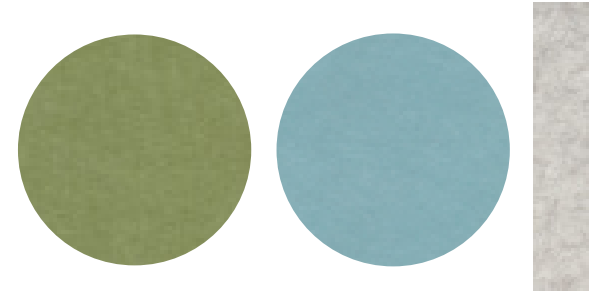
SOLID SURFACE (DINING CR COUNTER)



RESILIENT FLOOR (LEVEL 2 CLASSROOMS)



PAINT & WALL TILE (WATER CLOSETS)



ACOUSTIC CLOUDS AND BAFFLES



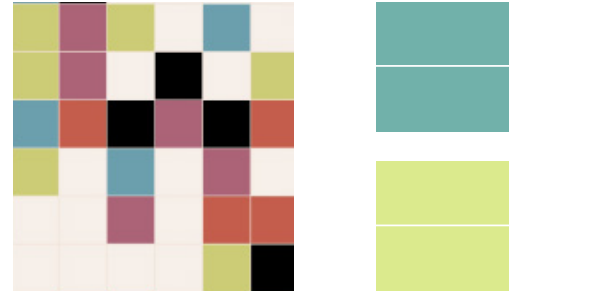
WOOD SHEET (BENCHES AND ENTRY COUNTER)



SOLID SURFACE (WASH COUNTER)

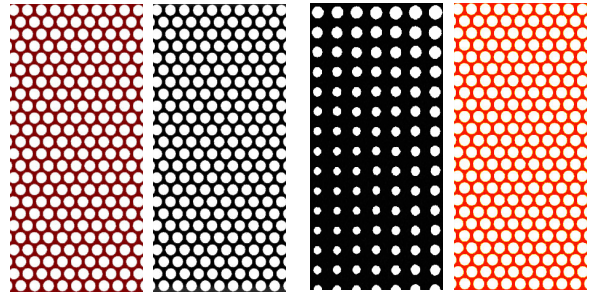


RESILIENT FLOOR (LEVEL 2 CORRIDOR)



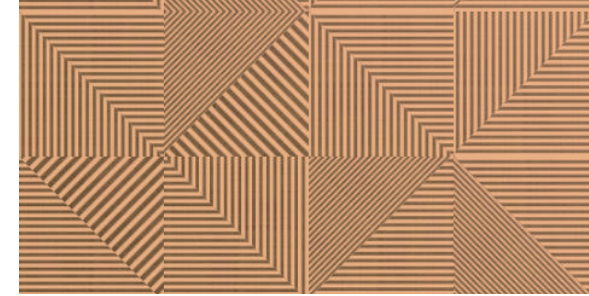
WALL TILE (WASH & DF)

WALL TILE (DINING)



PERF METAL SCREENS

PERF METAL CEILINGS



WOOD PANELS (ENTRY ACCENT WALL)



RESILIENT FLOOR (COLLAB & ELEVATOR)



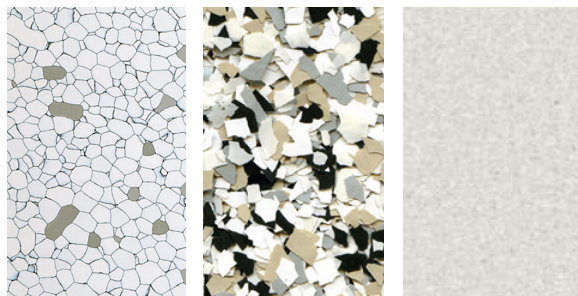
WALL PROTECTION (CORRIDORS)



LAMINATE & PAINTED METAL FRAMES (WCS)



WOOD & PAINTED METAL FRAMES (INTERIOR DOORS)



IDF FLOOR

KITCHEN FLOOR

WC FLOOR



RUBBER WALL BASE



LAMINATES (CLASSROOM CASEWORK & COUNTER)



LAMINATE (CR WORKTOP & DINING CASEWORK)

