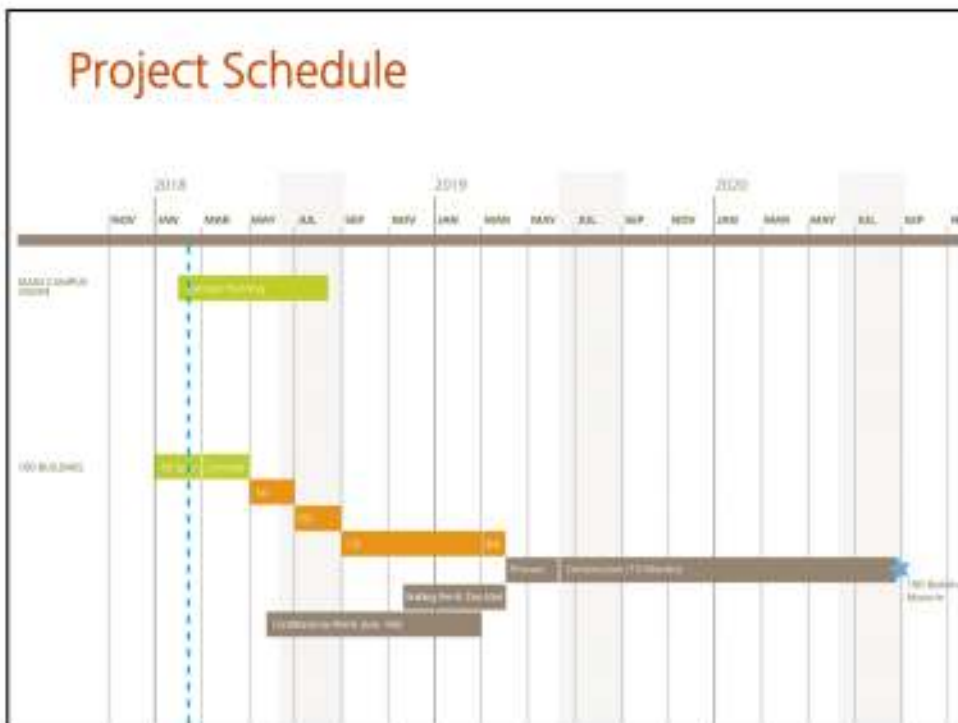




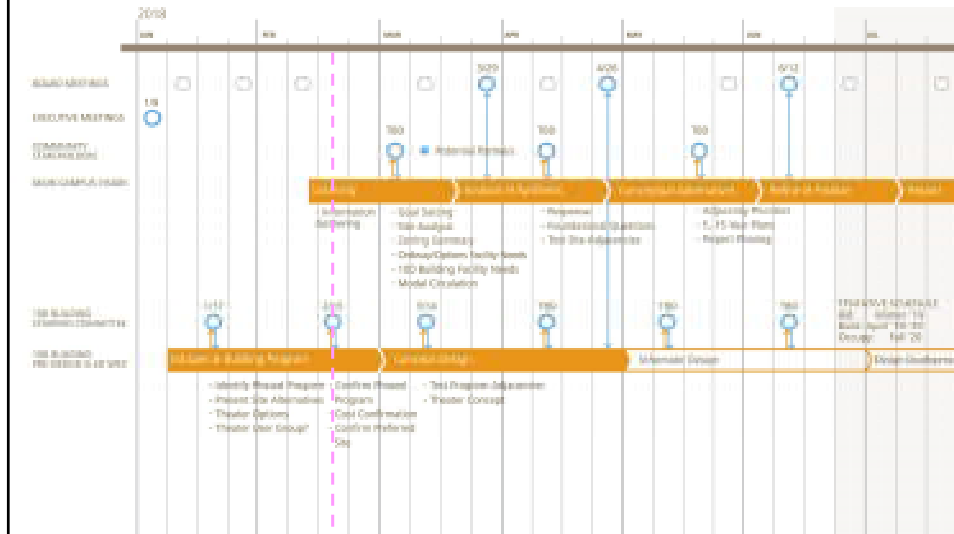
Agenda

- Project Schedule Review
- COBI Land Use Considerations
- User Group Feedback
- Review Outline Program
- Program Adjacencies
- Next Steps

Project Schedule Review



Project Schedule



Steering Committee 10 (17 Jan)

Steering Committee 10

- Process to develop a Main Campus Vision concurrent with Building 100 Planning
- In the context of escalating construction costs, how can we think of the 100 Building as a two-phase project? Consider what can be deferred.
- Adam Shalleck introduced the myriad components of HS performing arts.
- 350 vs. 600 seats what is the 'right size' for BHS?
- Consultant proposal to study theatre size

City of Bainbridge Island (25 Jan)

- Land Use Considerations

Meeting with COBI (25 January)

- Parking is a function of intended use for the auditorium. If for public assembly, then 70-120 spaces. If primarily for school use, then student and employee population determines number of spaces.
- 35' max height limit with Conditional Use Permit. 35'+ variance requires Council action.

Meeting with COBI (25 January)

- Draft Critical Areas Ordinance (CAO) does not currently apply to BISD property.
- If new 100 Building is located at same site, 'not likely' to trigger frontage improvements.
- New parking at Commodore demolition site would likely require traffic analysis and stormwater infrastructure.
- 'Site Assessment Review' (SAR) process to determine stormwater requirements during initial project planning.
- Downstream analysis will be required.

User Group Feedback (8 Feb)

- Music – P. Dalrymple and C. Thomas
- Drama – B. Hume and D. Clements
- 2D Art – M. Rowland

© MAHLUM

Review Outline Program

- CTE
- Music
- Theatre
 - Seat Count Discussion (600, 450, 350)
 - Katie Oman – Consultant, Cultural Economics

© MAHLUM

100 Building Summary Areas

	Bond
CTE / Arts	12,150
Music	5,300
Performing Arts	15,820
<u>Building Support</u>	<u>2,550</u>
Net Area	35,820
<u>Unassignable Space</u>	<u>10,640</u>
Gross Floor Area	46,460

100 Building Summary Areas - DRAFT

	Bond	350-Seat
CTE / Arts	12,150	11,100
Music	5,300	4,350
Performing Arts	15,820	13,860
<u>Building Support</u>	<u>2,550</u>	<u>2,300</u>
Net Area	35,820	31,610
<u>Unassignable Space</u>	<u>10,640</u>	<u>13,260</u>
Gross Floor Area	46,460	44,870

100 Building Summary Areas - DRAFT

	Bond	350-Seat	450-Seat
CTE / Arts	12,150	11,100	11,100
Music	5,300	4,350	4,350
Performing Arts	15,820	13,860	+1,500 15,360
Building Support	2,550	2,300	+150 2,450
Net Area	35,820	31,610	+1,650 33,260
Unassignable Space	10,640	13,260	+900 14,160
Gross Floor Area	46,460	44,870	+2,550 47,420

100 Building Summary Areas - DRAFT

	Bond	350-Seat	450-Seat
CTE / Arts	12,150	11,100	11,100
Music	5,300	4,350	4,350
Performing Arts	15,820	13,860	15,360
Building Support	2,550	2,300	2,450
Net Area	35,820	31,610	33,260
Unassignable Space	10,640	13,260	14,160
Gross Floor Area	46,460	44,870	47,420

100 Building Program - 350-Seat Example

CTE-ARTS	Area (sf)
Culinary Arts Lab	900
Woods Lab	1,800
Composites Lab	900
Drafting Lab	1,200
Photography Lab Yearbook	0
Light Studio/Greenroom	0
Industrial Technology Flexible Area - Shared	900
Robotics (see Indust. Tech, Lab above)	0
Art Lab (3D)	1,350
Kiln Room (verify quantity/type of kilns)	150
Art Lab (2D)	1,350
Shared Flexible Areas (2 x 600 sf)	1,200
Shared Offices	300
Storage Rooms	1,050
CTE NEW CONSTRUCTION Subtotal	11,100

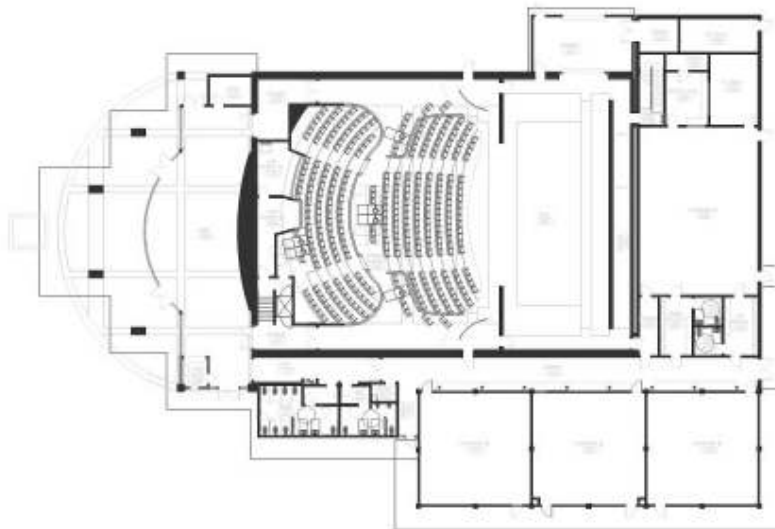
100 Building Program - 350-Seat Example

MUSIC	Area (sf)
Vocal (in Drama Classroom)	0
Instrumental	2,100
Instrument Storage	600
Uniform Storage	300
Practice Rooms (2 x large ensemble)	600
Practice Room (3 x small ensemble)	450
AV Recording Lab Greenroom (in Practice Rooms)	0
Shared Office	150
Music Library Workroom	150
MUSIC Subtotal	4,350

100 Building Program - 350-Seat Example

PERFORMANCE SPACE - 350 Seats	Area (sf)
Lobby/Alternative Student Commons	1,750
Concessions (proximate to Culinary Lab)	150
Theater + Stage	5,900
Pit and Storage	400
Light Lock	240
Control Room	150
Scene Shop and Theatre Storage	1,500
Backstage Support	400
Dressing Rooms and Backstage Restrooms	700
Costume Storage / Laundry	250
Dimmer and Amplifier Rooms	200
Janitor Closet	50
Front-of-house Storage / Ticket Booth	100
Office / Planning	120
Drama Classroom / Vocal / Greenroom	1,750
Drama Classroom Storage	200
PERFORMING ARTS Subtotal	13,860

Example : 360-Seat Theatre (Carmel, CA)





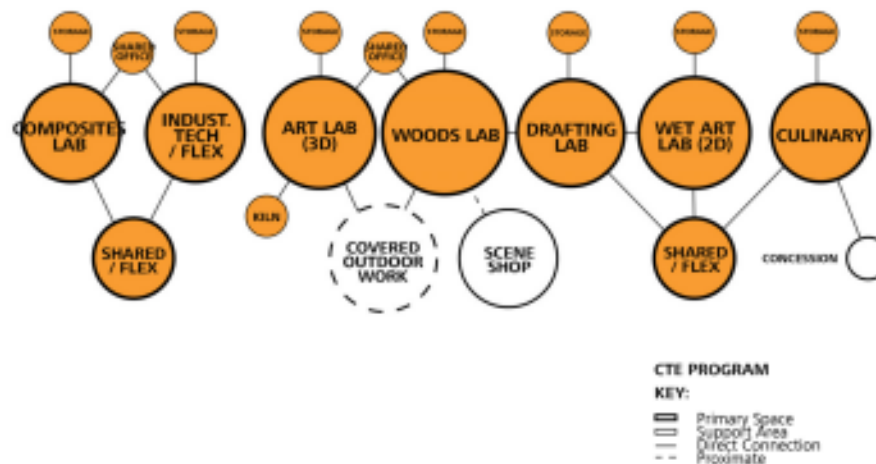
Program Adjacencies + Conceptual Plans

- CTE
- Music
- Performing Arts

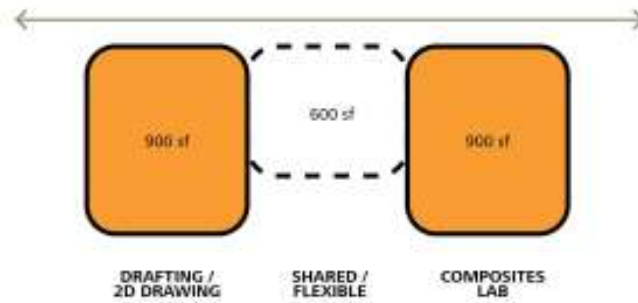
100 Building Program - 350-Seat Example

CTE-ARTS	Area (sf)
Culinary Arts Lab	900
Woods Lab	1,800
Composites Lab	900
Drafting Lab	1,200
Photography Lab Yearbook	0
Light Studio/Greenroom	0
Industrial Technology Flexible Area - Shared	900
Robotics (see Indust. Tech, Lab above)	0
Art Lab (3D)	1,350
Kiln Room (verify quantity/type of kilns)	150
Art Lab (2D)	1,350
Shared Flexible Areas (2 x 600 sf)	1,200
Shared Offices	300
Storage Rooms	1,050
CTE NEW CONSTRUCTION Subtotal	11,100

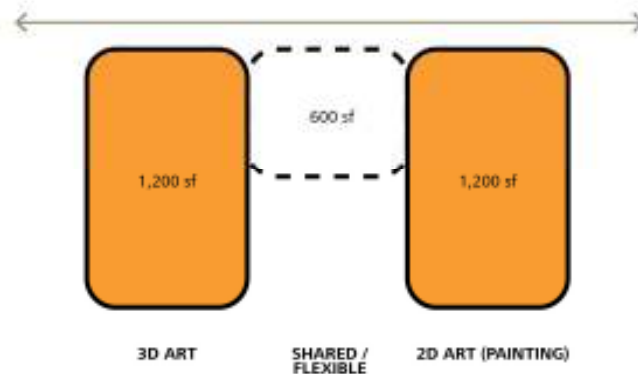
CTE



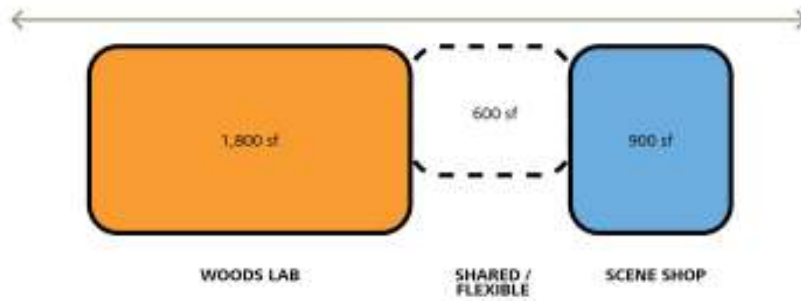
CTE – Modular Arrangement



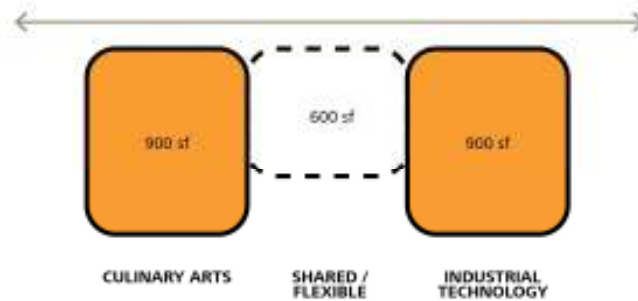
CTE – Modular Arrangement



CTE – Modular Arrangement



CTE – Modular Arrangement



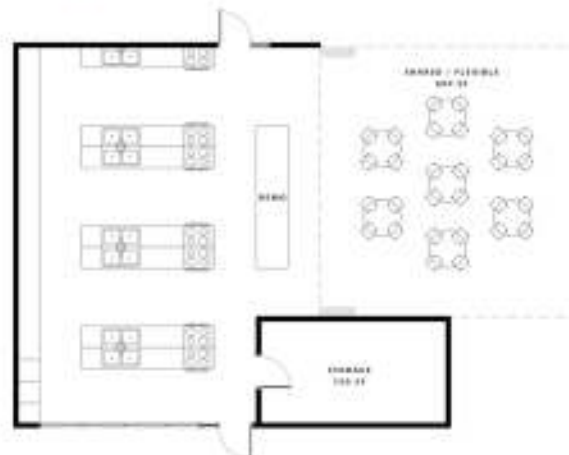


What We Learned – User Groups

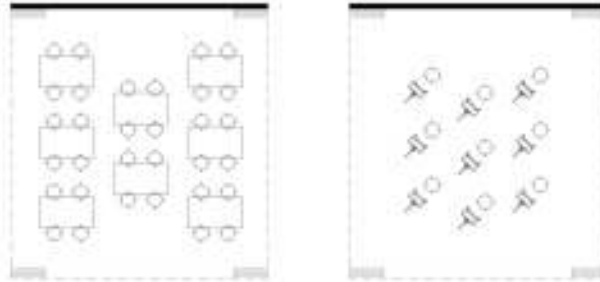
Culinary Arts

- Room size a current concern
- Desire for a more 'professional' styled kitchen.
- Hoping to start a café with 'front of house' (serving) and 'back of house' (preparation) and delivery.
- Commercial opportunities for catering kitchens and kitchen rentals.
- Desired adjacency with SPED to give those students exposure to the program.
- Desire a large covered exterior space

Culinary Arts



Shared Flexible

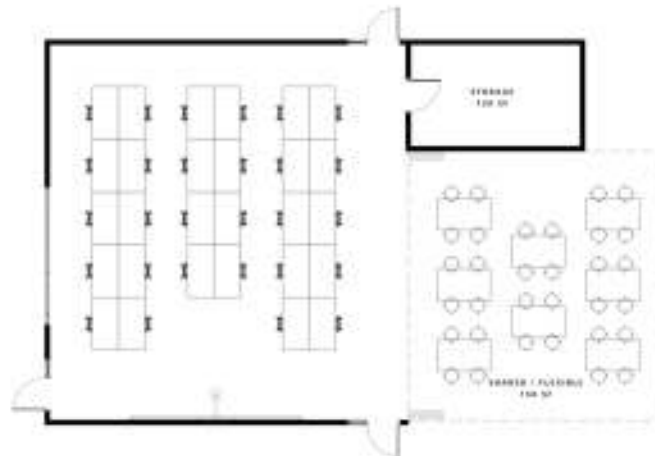


What We Learned – User Groups

Drafting

- Quiet space with adequate (24x18) drawing area.
- Computer terminals
- Ideally adjacent and visible to the shop space.
- Teaching methodology: uses smart board to present and individual desk critiques.

Drafting Lab

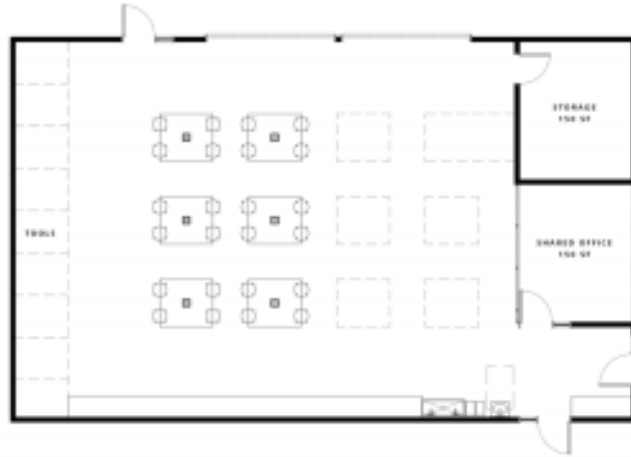


What We Learned – User Groups

Wood Tech

- Desire for a large space to work on bigger projects, such as an architectural shed.
- Program's goal would be to build a 20' boat. Needs space for that.
- Desired adjacency to the drafting room.
- Vision for a shared resource: shop with composites, metals (small scale), and wood.
- "Dirty" space.
- Desire a large covered exterior space

Woods Lab



Covered Outdoor Work Yard



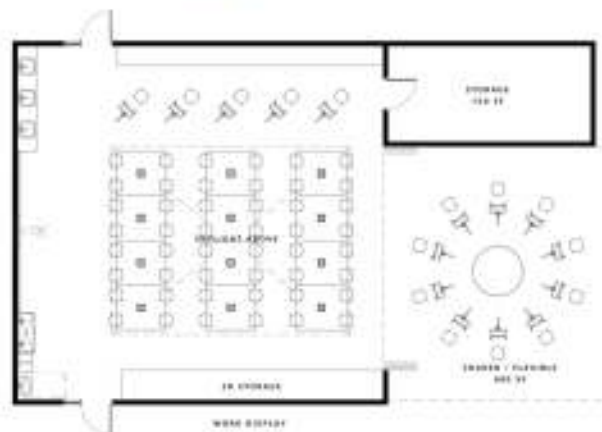


What We Learned – User Groups

Studio Art (2D)

- 21-32 students per class
- Lighting is important; north daylight exposure ideal
- Spray booth needed; improved industrial hygiene
- Public display area for student work
- Provide access to computer stations for digital art
- Provide ample area for storing work and materials, including vertical flat storage
- Sinks are currently a bottleneck; provide for clean, quick transitions into class.

Wet Art Lab (2D)





What We Learned – User Groups

Ceramics

- 5 kilns are adequate. Firing occurs around the clock and room needs special ventilation.
- 6 pottery wheels are adequate.
- Desire for a patio and covered outdoor spaces for Raku firing. This space could be shared with other programs.
- Desire for dedicated student gallery display space.
- Desire for dedicated classroom critique area; less easily shared.
- Cleaning 'transition zone' is important. Walk-off, sinks, bag storage etc.

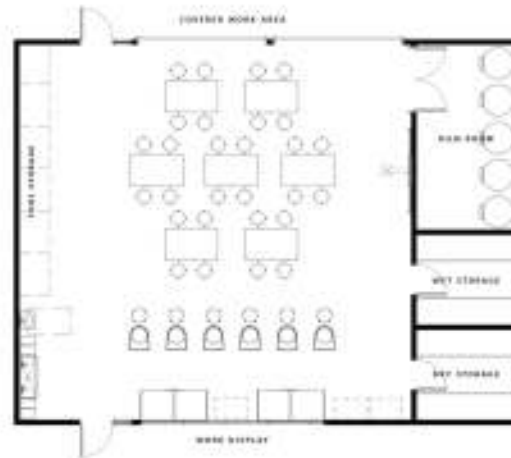


What We Learned – User Groups

Sculpture

- Desire for a spray booth.
- Rectangular tables for up to 6 students are ideal.
- A clean space for individual computer access is desired.
- High ceilings, natural light and a teaching station with a smart board are desired.
- Space needs to foster and support movement. 40 bodies are competing for space.
- Storage for tools.
- Storage for projects.

Art Lab (3D)

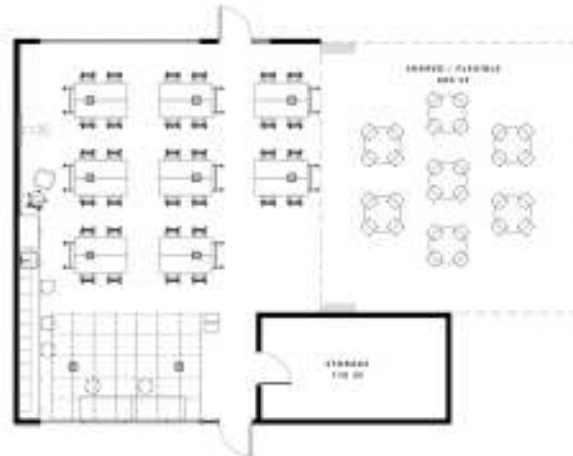


What We Learned – User Groups

Robotics

- Needs access to wood, metals, CAD, fabrication space.
- Desire for a large, covered outside area: 40'x30' for robot testing with approx. 14' clear to roof.
- Testing area adjacent to shop area.
- Robotics season is September to March. Fabrication begins in October.
- Does not need to be adjacent to physics lab.
- Community software mentors need a classroom setting to teach programming.

Industrial Tech / Flexible

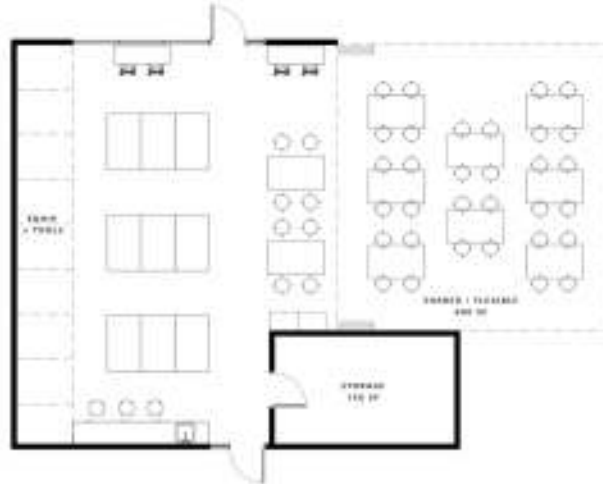


What We Learned – User Groups

Composites

- Future space for more additive and subtractive modeling equipment.
- Composites and robotics are compatible: 'clean' and pressurized room.
- Desire a large covered exterior space
- Vacuums and pneumatics needed.
- Current space concerns: working space, project space, and storage space.
- Community mentors spend time with some advanced students.

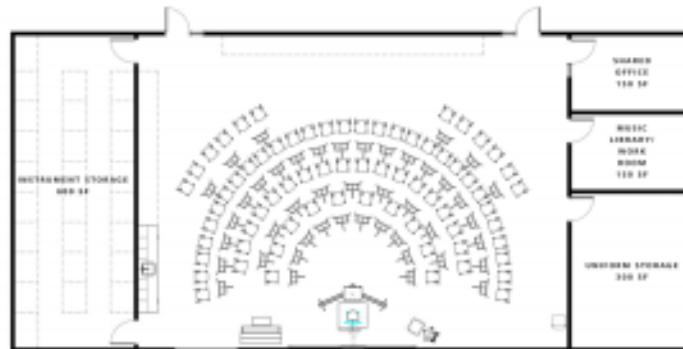
Composites Lab



100 Building Program - 350-Seat Example

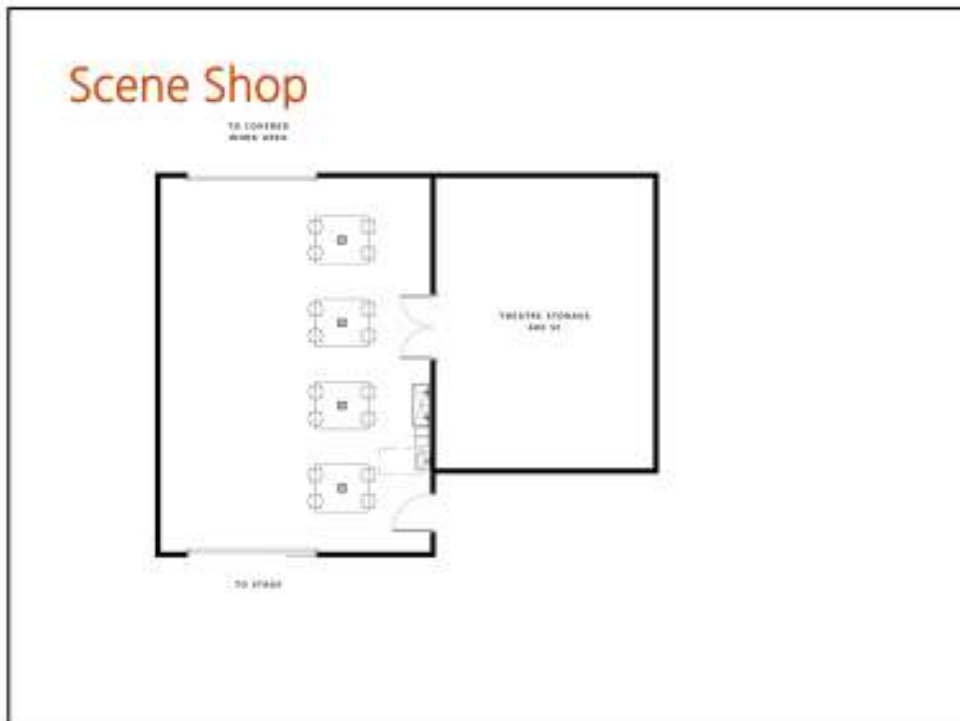
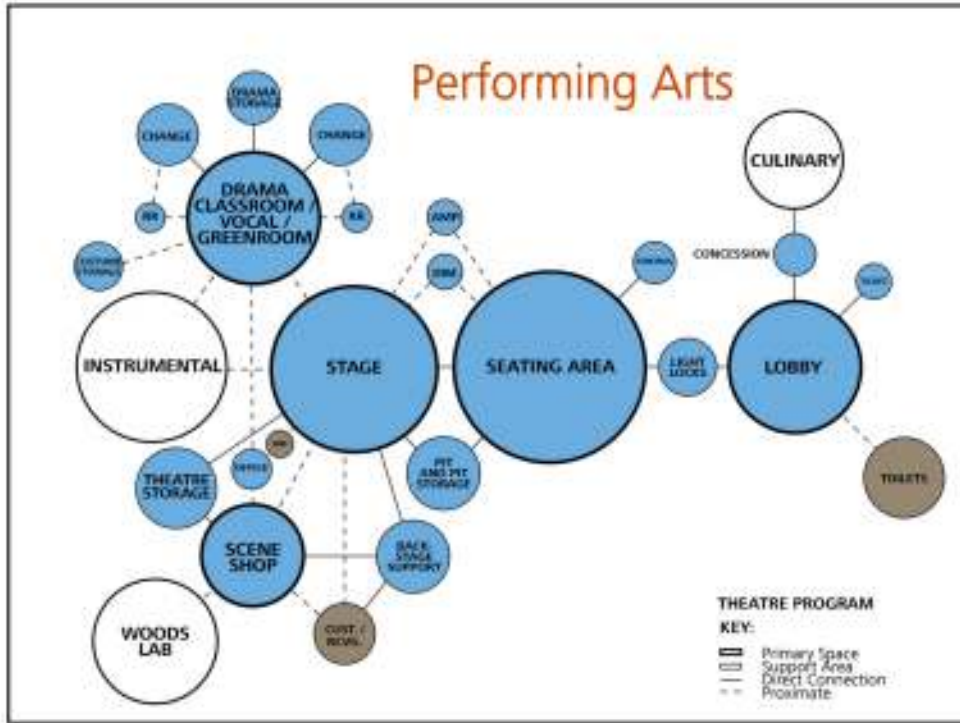
MUSIC	Area (sf)
Vocal (in Drama Classroom)	0
Instrumental	2,100
Instrument Storage	600
Uniform Storage	300
Practice Rooms (2 x large ensemble)	600
Practice Room (3 x small ensemble)	450
AV Recording Lab Greenroom (in Practice Rooms)	0
Shared Office	150
Music Library Workroom	150
MUSIC Subtotal	4,350

Instrumental



100 Building Program - 350-Seat Example

PERFORMANCE SPACE - 350 Seats	Area (sf)
Lobby/Alternative Student Commons	1,750
Concessions (proximate to Culinary Lab)	150
Theater + Stage	5,900
Pit and Storage	400
Light Lock	240
Control Room	150
Scene Shop and Theatre Storage	1,500
Backstage Support	400
Dressing Rooms and Backstage Restrooms	700
Costume Storage / Laundry	250
Dimmer and Amplifier Rooms	200
Janitor Closet	50
Front-of-house Storage / Ticket Booth	100
Office / Planning	120
Drama Classroom / Vocal / Greenroom	1,750
Drama Classroom Storage	200
PERFORMING ARTS Subtotal	13,860



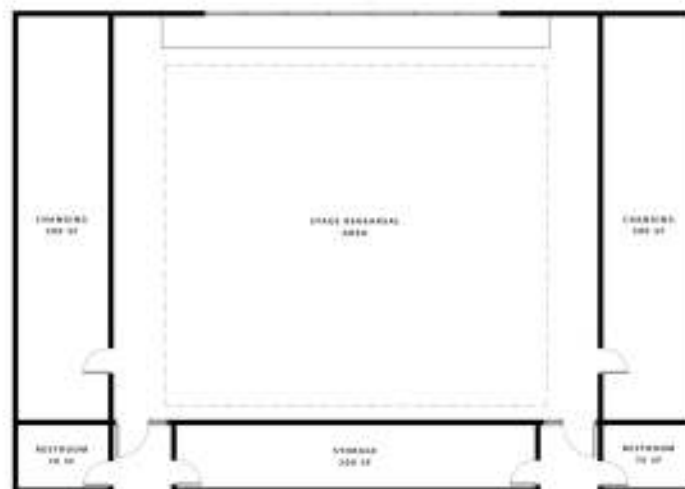


What We Learned – User Groups

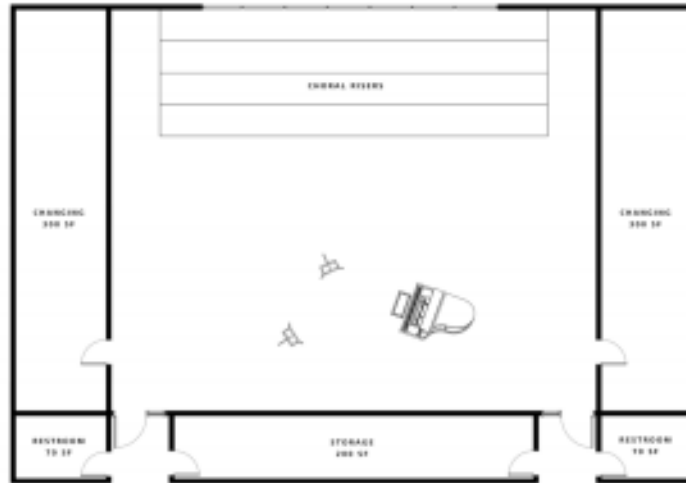
Drama

- 34 students
- Drama program is growing; annual student one-act plays are very popular
- Ideal drama classroom can 'mirror' the stage dimensions for rehearsals
- Orchestra pit is desired, including like-sized rehearsal space.
- Backstage support areas need to facilitate quick changes.

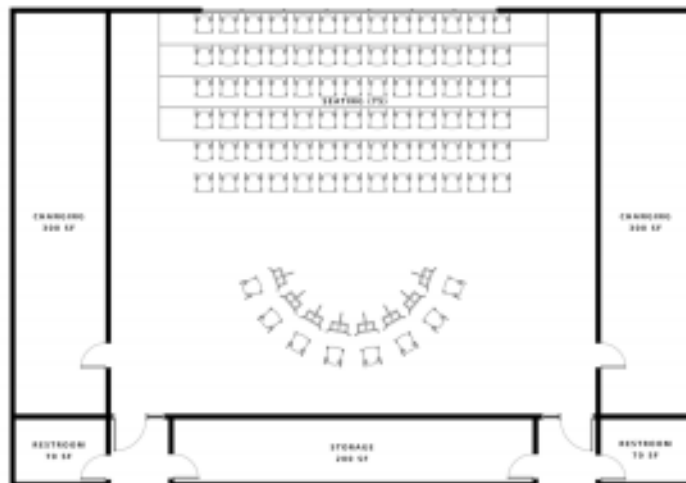
Drama Classroom / Vocal / Greenroom



Drama Classroom / Vocal / Greenroom



Drama Classroom / Vocal / Greenroom



Next Steps

Bainbridge Youth Services

Main Campus Vision

Confirm Future Meeting Dates

Finalize Educational Specifications

© MAHLUM