



# BHS 100 Building – 15 October

## BISD Board Meeting





# Agenda

Department Programs

BHS 100 Building

Community Voice

# Departments

CTE

Fine Arts

Special Education

Performing Arts

CTE

Fine Arts

Special Education

Performing Arts



# CTE- Career Technical Education

Drafting & Design

Economics\*

Technical Graphics

Composite Engineering

Athletics Medicine\*

Forensic Science\*

Wood Technologies

Foods

Digital Photography\*

Computer Science\*

Childhood Education

Robotics\*

Digital Design\*

Fashion Design  
& Production

Newspaper\*

Finance\*

Law & Order\*

*\*Located in various buildings*

Accounting\*

# Career Technical Education



CTE

**Fine Arts**

Special Education

Performing Arts



# Fine Arts

Drawing & Design

Painting

Ceramics

Sculpture

Studio Art



# Fine Arts



CTE

Fine Arts

**Special Education**

Performing Arts



# Special Education

Integrated Learning Classroom (ILC)

Learning Strategies

Speech Language Pathologist (SLP)

Occupational Therapist Physical Therapist (OTPT)

# Special Education



CTE

Fine Arts

Special Education

**Performing Arts**



# Performing Arts

Drama

Music

Band

Percussion Ensemble

Symphonic Band

Wind Ensemble

Jazz Band

Guitar

Concert Choir

Treble Choir

Chamber Choir

Jazz Choir

# Performing Arts





# Bainbridge High School - 100 Building

## 3 Options

Black Box

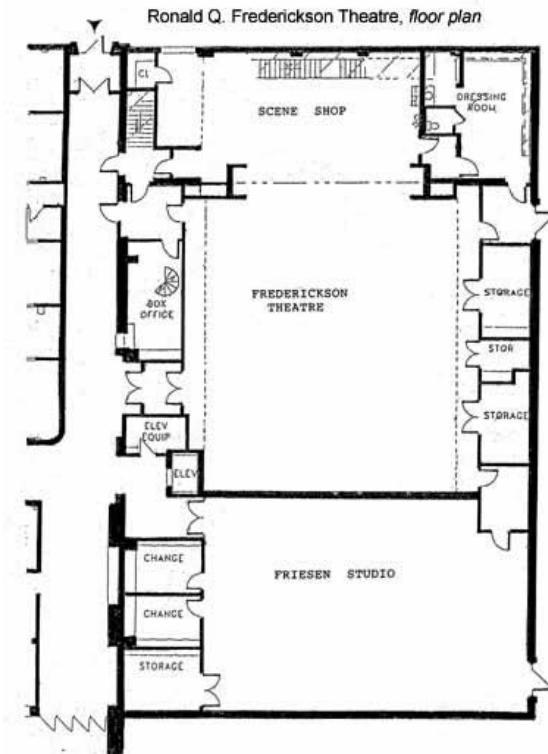
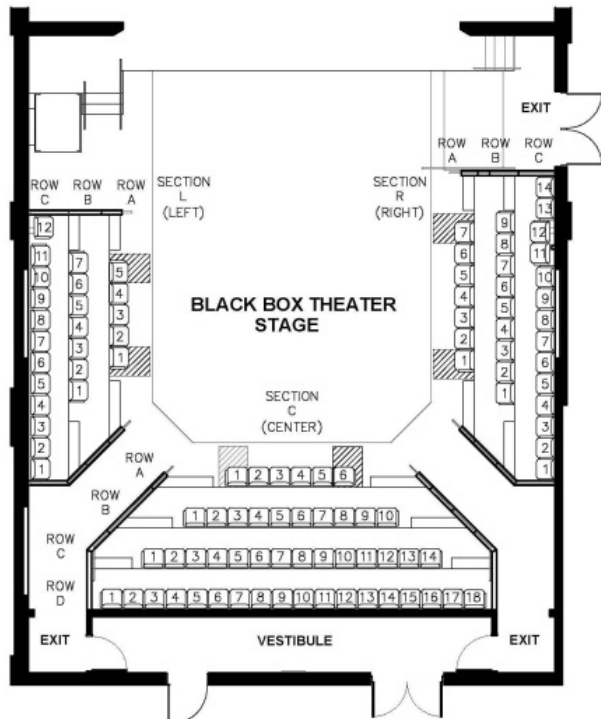
450 Seat Theater

600 Seat Theater





# Black Box



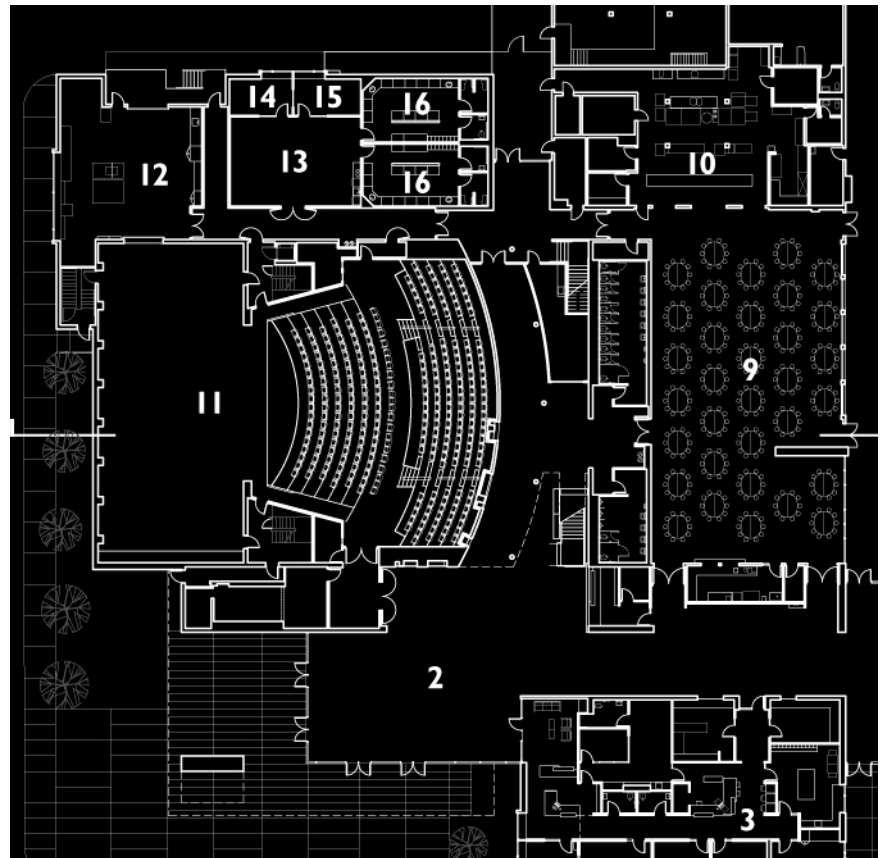


# Full Theater

Sammamish

High School

Bellevue, Washington



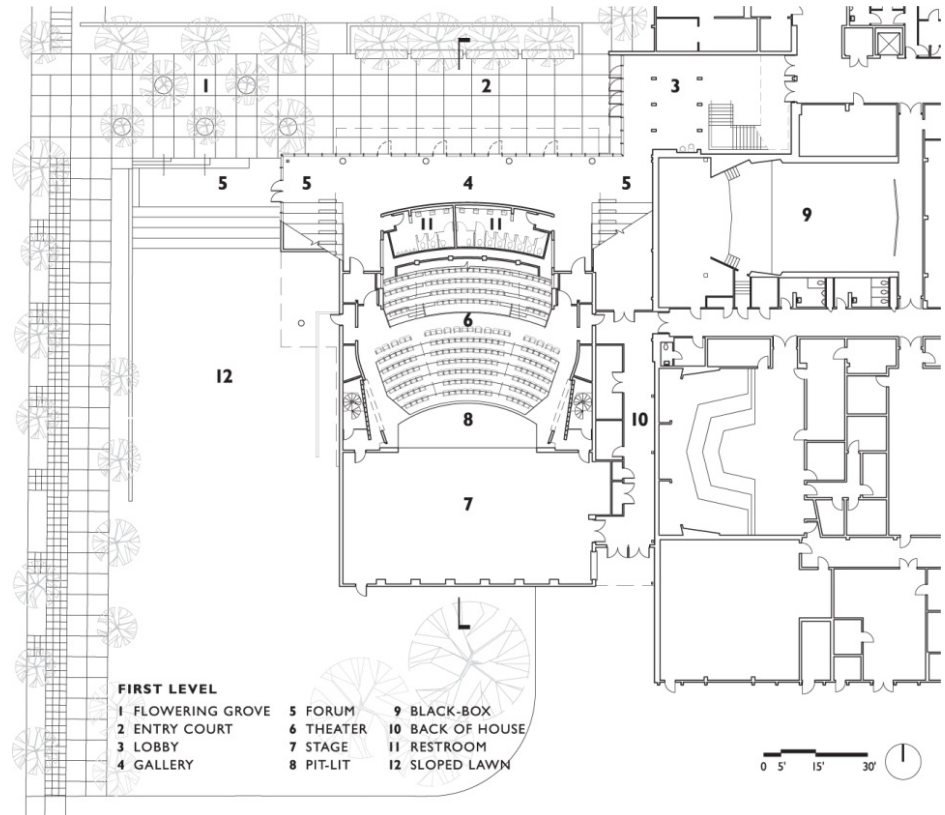




# Full Theater

Nathan Hale  
High School

Seattle, Washington



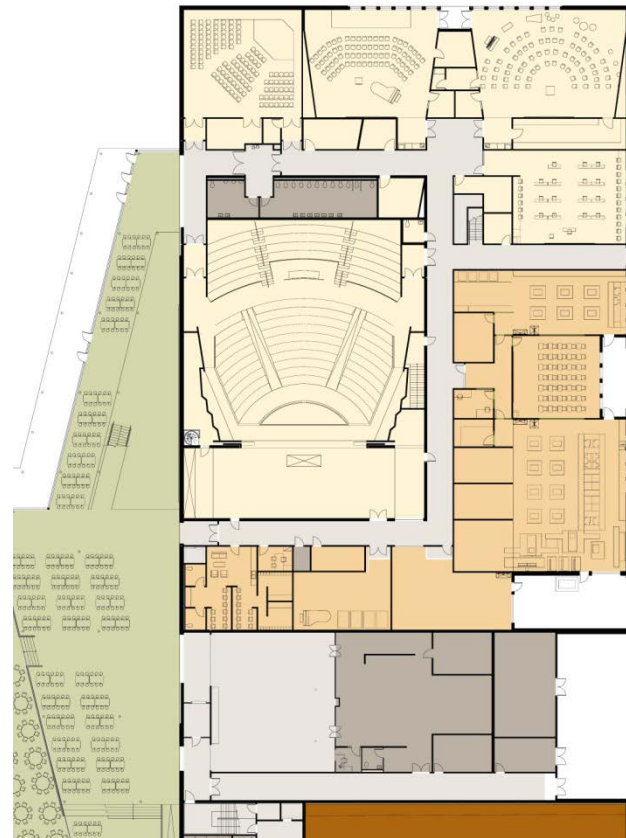




# Full Theater

Issaquah  
High School

Issaquah, Washington





# High School Performing Arts Facilities - WA

High School	Auditorium	Black Box
<b>Bellevue School District</b>		
Bellevue	450	30
Interlake	350	No
Newport	660	10
Sammamish	450	No
<b>Issaquah School District</b>		
Issaquah	622	107
Liberty	596	100
Skyline	497	100



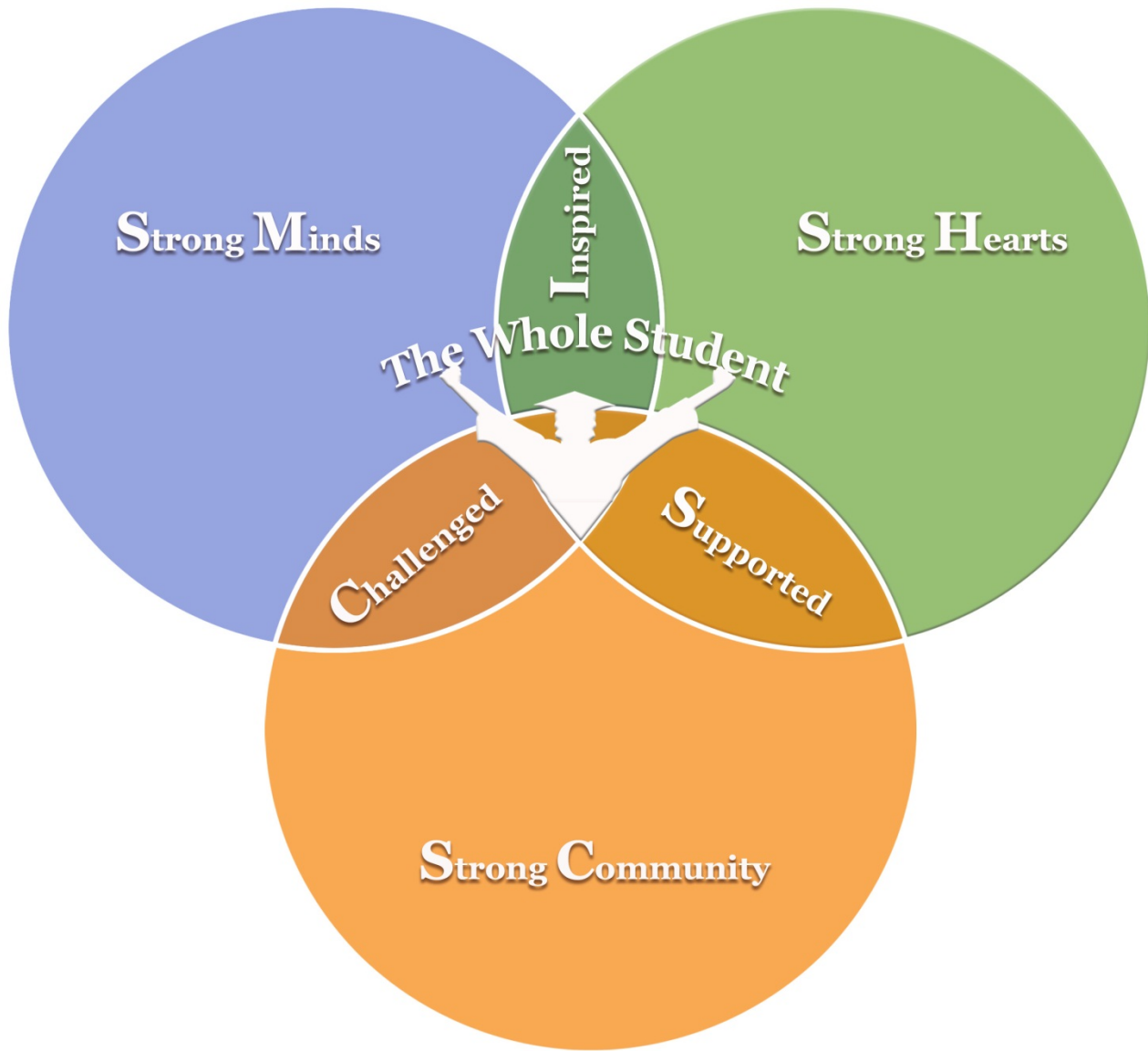
# High School Performing Arts Facilities - WA

High School	Auditorium	Black Box
<b>Mercer Island School District</b>		
Mercer Island	535	No
<b>Bremerton School District</b>		
Bremerton	1200	No
<b>North Kitsap School District</b>		
Community Auditorium Middle school campus	600	No
Kingston (shares w/above)	No	No
North Kitsap (shares w/above)	No	30
<b>South Kitsap School District</b>		
South Kitsap	600+	70/100/350

# High School Performing Arts Facilities - WA

High School	Auditorium	Black Box
<b>Seattle School District</b>		
Ballard	450	50
Franklin	400	40
Nathan Hale	600+	150
Roosevelt	775	75
Chief Sealth International	1000	100+
West Seattle	390	No

**BHS 100 Building**  
Duane Fish, Principal



**Bainbridge Island School District**

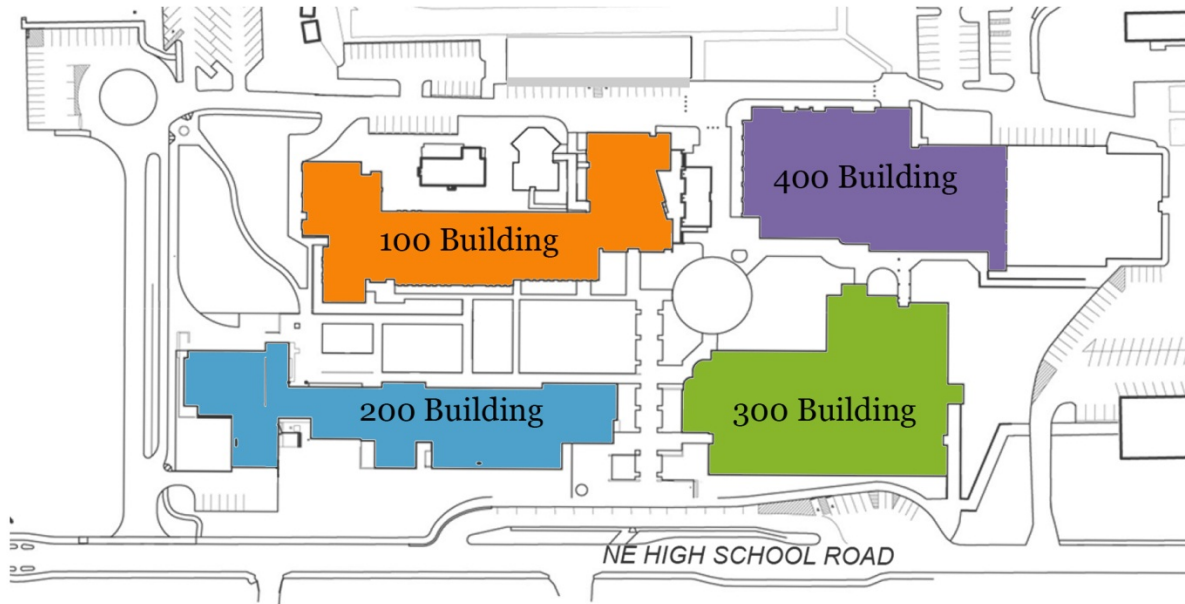
**The missing link!**

**Math  
Foreign Languages**

**Performing Arts  
Fine Arts  
C.T.E.**

**Sciences  
Language Arts**

**Physical Education**



**Bainbridge High School**

# Bainbridge High School – 100 Building

## Options:

- Short-term immediate need for Postpone, Patch and Repair (unsustainable):  
**\$7.18M + \$1.27M** (in structural upgrades that may not be feasible)
- Modernize existing building (unsustainable):  
**\$15.38M + \$1.27M** (in work that may trigger additional costs due to structural deficiencies)
- New building option A  
**\$15.4M** (w/black box 150-175 seat)
- New building option B  
**\$24.3M** (w/300-450 seat theater)
- New building option C  
**\$27.02M** (w/600 seat theater)

# Community Forum Themes

- Black Box is insufficient for school's needs
- Concern for condition of the entire building
- Cost difference between 400 and 600 seats makes larger theatre feel more cost effective and practical
- No large capacity theatre on Bainbridge Island
- Currently there is insufficient space and poor configuration for class program needs
- A larger theatre would need to be flexible to accommodate a wide range of uses
- Desire to have a space that will allow BISD to host other schools for performances, lectures and competitions
- Concern that BISD monitors debt capacity
- Rental revenue potential
- Concern that footprint of existing facility is not large enough

# Community Voice



# Board Discussion