

mahlum

Inclusive Restroom Design

Bainbridge High School 100 Building

School Board Meeting :: 28 March 2019





Agenda

Inclusive Design

Design Strategies and Examples

BHS 100 Building Proposal

Questions & Discussion

Inclusive Design

Inclusive Design :: Common Understanding

Unisex public toilet

Unisex bathroom

Gender-neutral restroom

Gender-inclusive washroom

All gender restroom

Single occupant toilet room

An inclusive restroom is one where the signage is visibly identified with open, inclusive language, not identifying as either male or female. They are **void of gender identity** and have accommodations that are especially sensitive to the needs of a greater range of people.

Inclusive washroom facilities benefit **transgender** populations and other people who exist outside of the gender binary; people with **disabilities**, the **elderly**, and anyone else who may **require the assistance of someone of another gender**; and parents who may wish to **accompany their children** to the washroom or toilet facility.

Inclusive Design :: White House, 13 May 2016

Title IX of the Education Amendments of 1972 **(Title IX) and its implementing regulations prohibit sex discrimination in educational programs** and activities operated by recipients of Federal financial assistance. **This prohibition encompasses discrimination based on a student's gender identity,** including discrimination based on a student's transgender status.

This letter summarizes a school's Title IX obligations regarding transgender students and explains how the U.S. Department of Education (ED) and the U.S. Department of Justice (DOJ) evaluate a school's compliance with these legal obligations."

<https://www.justice.gov/opa/file/850986/download>

<https://www2.ed.gov/about/offices/list/oese/oshs/emergingpractices.pdf>

Inclusive Design :: OSPI

Gender Identity and Expression in Schools

Restrooms Excerpt

Public schools must allow students to use the restroom that corresponds to their gender identity.

Any student—transgender or not—who requests greater privacy for any reason should be given access to an alternative restroom, such as a staff restroom or health office restroom. However, school staff cannot require a student to use an alternative restroom because of their transgender or gender non-conforming status.

City of Bainbridge Island Policy 7.01 BIMC

...specific signage and **access requirements for single-occupant restrooms** located in places...and facilities of taxing districts located on Bainbridge Island.



Planning and Community Development Department Policy

Procedure for Reporting Violations of Chapter 7.01 BIMC

Description:

This policy establishes a procedure for reporting violations of Chapter 7.01 BIMC.

Background:

BIMC 7.01.010 establishes specific signage and access requirements for single-occupant restrooms located in places of public accommodation, facilities of the City, and facilities of taxing districts located on Bainbridge Island. Under BIMC 7.01.020, every individual on Bainbridge Island has the right to use public restrooms or public facilities located on Bainbridge Island that best conform to their chosen gender identity and expression. BIMC 7.01.030 authorizes and directs the Director of the Department of Planning and Community Development ("Director") to promulgate rules to enforce the provisions of Chapter 7.01 BIMC.

Implementation:

Any individual who observes a potential violation of Chapter 7.01 BIMC may report the violation to the Director by submitting a report through SeeClickFix, either via the mobile application or through the following link:

- <https://www.bainbridgewa.gov/635/Report-Road-Code-Issues>.

The report should include the date the violation was observed, the location of the violation, the individual or entity responsible for the violation, and, where applicable, a photograph of the restroom signage that violates the code.

The Director, through the City's Code Enforcement Officer, may investigate any reports of alleged violations of Chapter 7.01 BIMC, including confirming the display of appropriate signage.

Upon a determination of noncompliance, the Director, through the City's Code Enforcement Officer, will enforce the requirements of Chapter 7.01 BIMC in the manner specified by BIMC 7.01.030.

APPROVED BY:

A handwritten signature in blue ink, appearing to read 'Gary R. Christensen', written over a horizontal line.

Gary R. Christensen, ACIP, Director

Date: September 4, 2018

Planning and Community Development
280 Madison Avenue North
Bainbridge Island, Washington 98110-1812
www.bainbridgewa.gov
206.842.7633

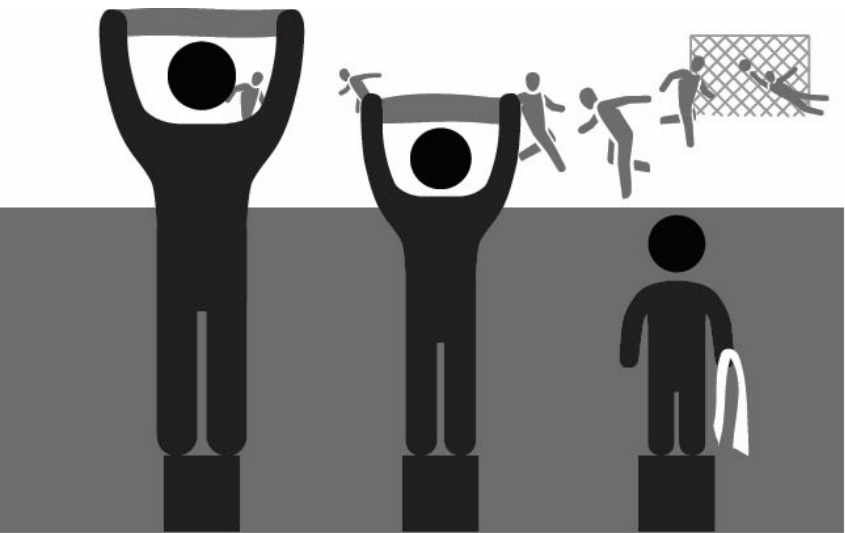
BISD Board Policy 3212

The Bainbridge Island School District believes in fostering an educational environment that is **safe and free of discrimination for all students**, regardless of sex, sexual orientation, **gender identity or gender expression**.

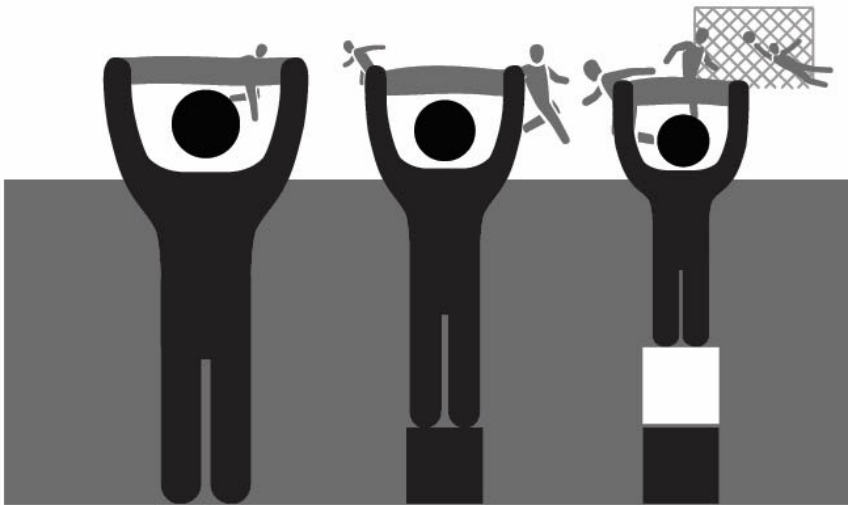
To that end, the district recognizes the importance of **an inclusive approach towards transgender students** with regard to official records, confidential health and education information,

communication, **restroom and locker room accessibility**, sports and physical education, dress codes and other school activities, in order to provide these students with an **equal opportunity for learning and achievement**. This policy and its procedure will support that effort by facilitating district compliance with local, state, and federal laws concerning harassment, intimidation, bullying, and discrimination.

Inclusive Design



Equality



Equity



Considerations

Privacy

Safety & Security

Signage Conventions

Health, Hygiene & Acoustics

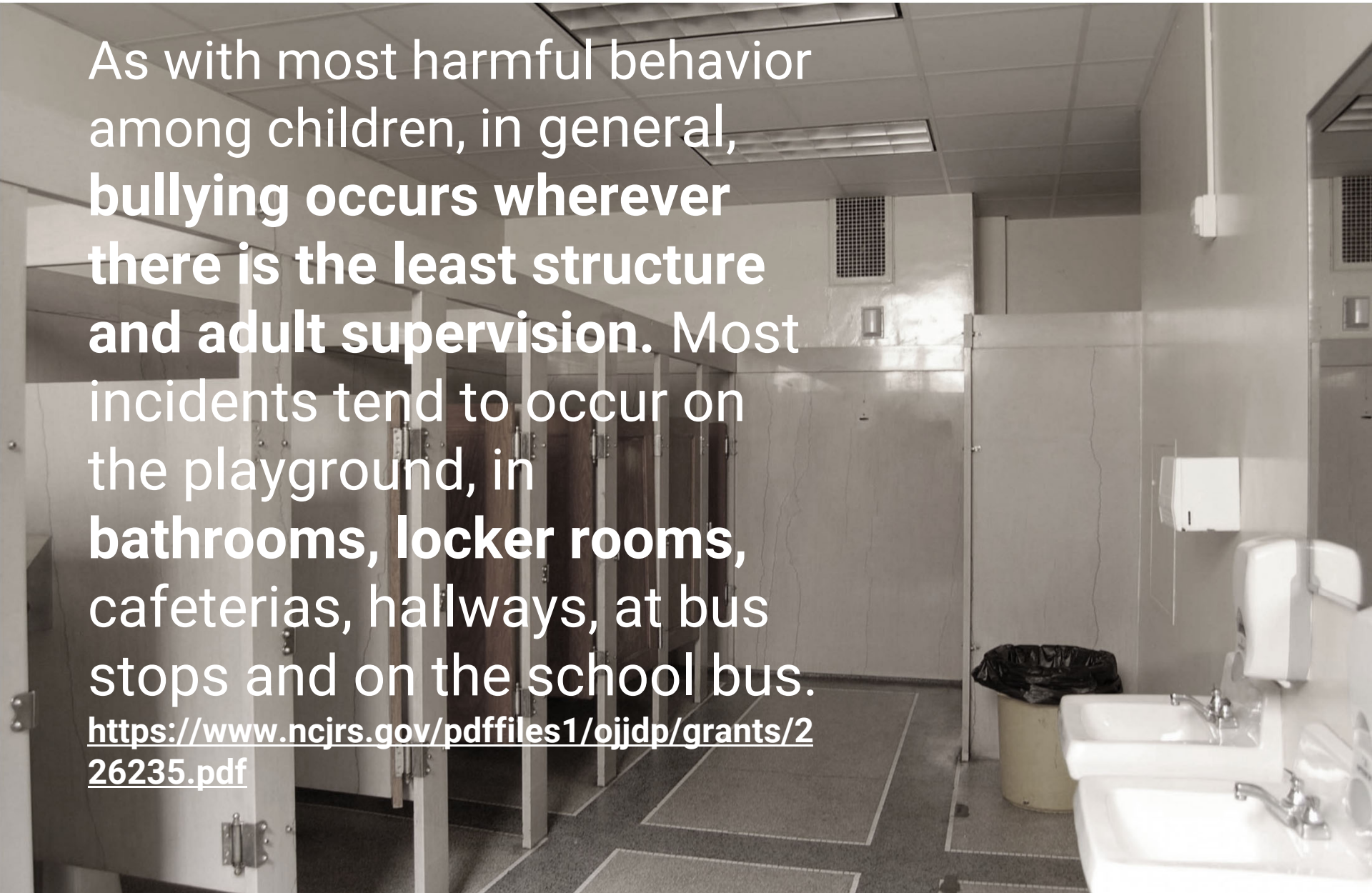
Levels of Privacy



Safety & Security

As with most harmful behavior among children, in general, **bullying occurs wherever there is the least structure and adult supervision.** Most incidents tend to occur on the playground, in **bathrooms, locker rooms,** cafeterias, hallways, at bus stops and on the school bus.

<https://www.ncjrs.gov/pdffiles1/ojjdp/grants/26235.pdf>



Safety & Security



Signage Conventions



Health, Hygiene & Acoustics



Design Strategies & Examples

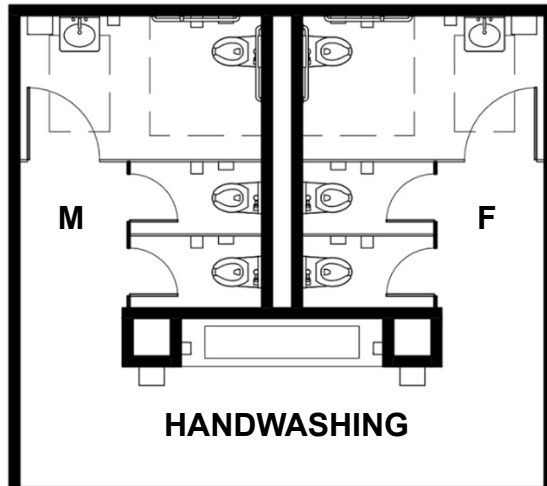
Inclusive Design :: Distributed Restrooms



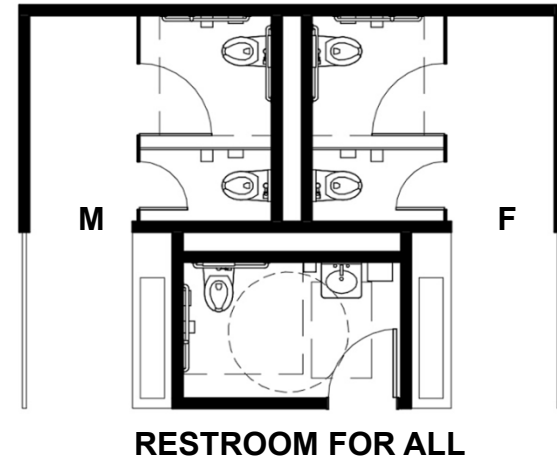
Distributed Restrooms

Separated, Gendered Facilities

Visible Handwashing Area



OPEN TO HALLWAY

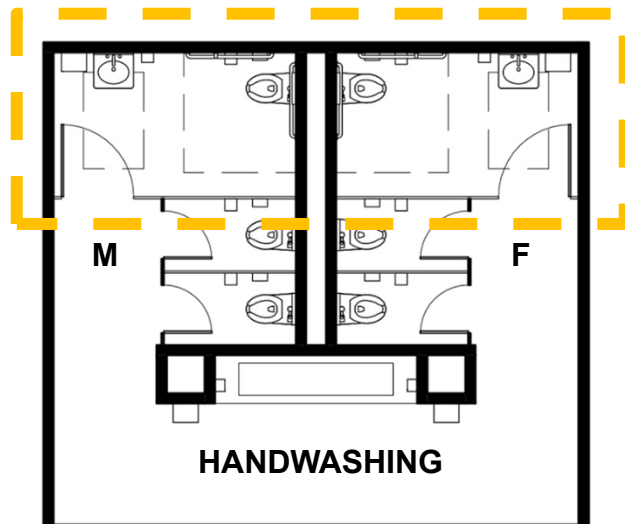


Distributed Restrooms

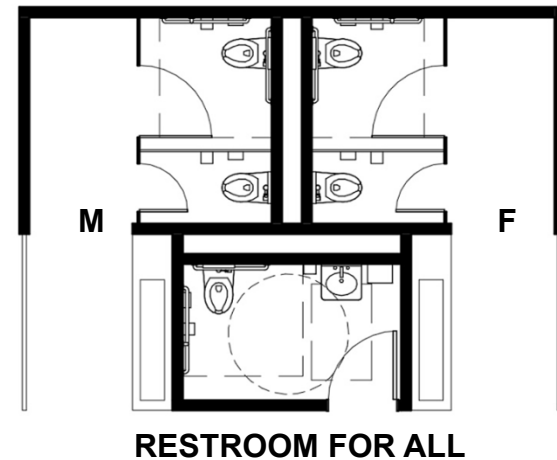
Separated, Gendered Facilities

Visible Handwashing Area

Option for Private Handwashing



OPEN TO HALLWAY

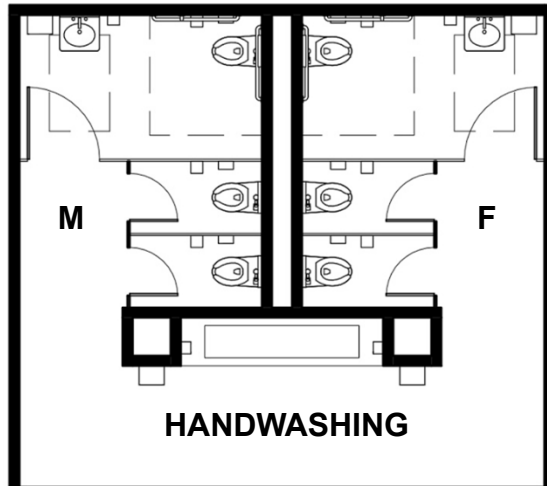


Distributed Restrooms

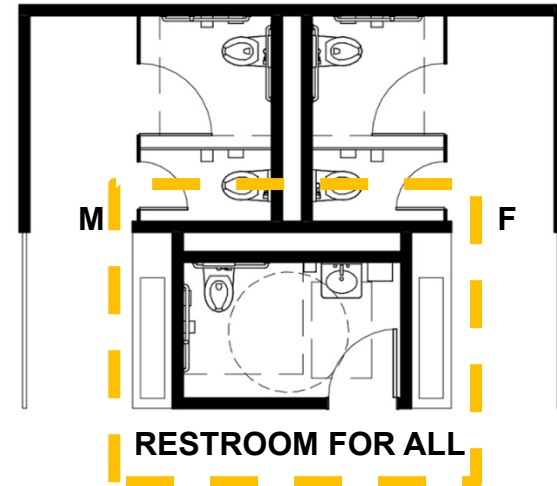
Separated, Gendered Facilities

Visible Handwashing Area

Restroom For All



OPEN TO HALLWAY

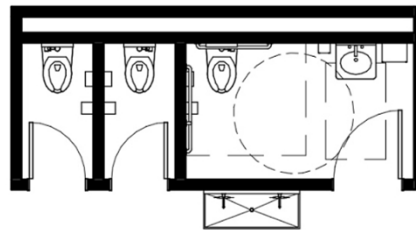
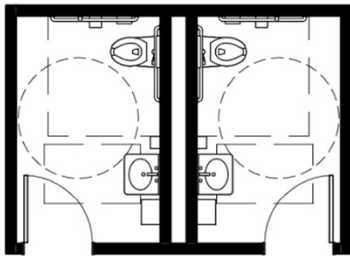


Distributed Restrooms :: One at a Time

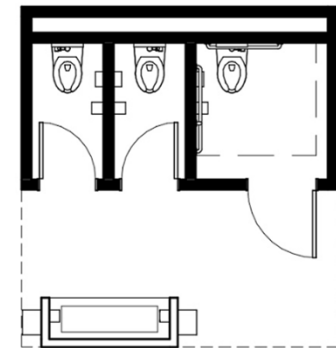
Individual, Non-Gendered Facilities

Fully Enclosed Compartments (most private)

Visible & Private Handwashing Strategies



**VISIBLE & PRIVATE
HANDWASHING**



**VISIBLE
HANDWASHING**

Inclusive Design :: Assembly Spaces



Assembly Spaces

Privacy
Considerations ::

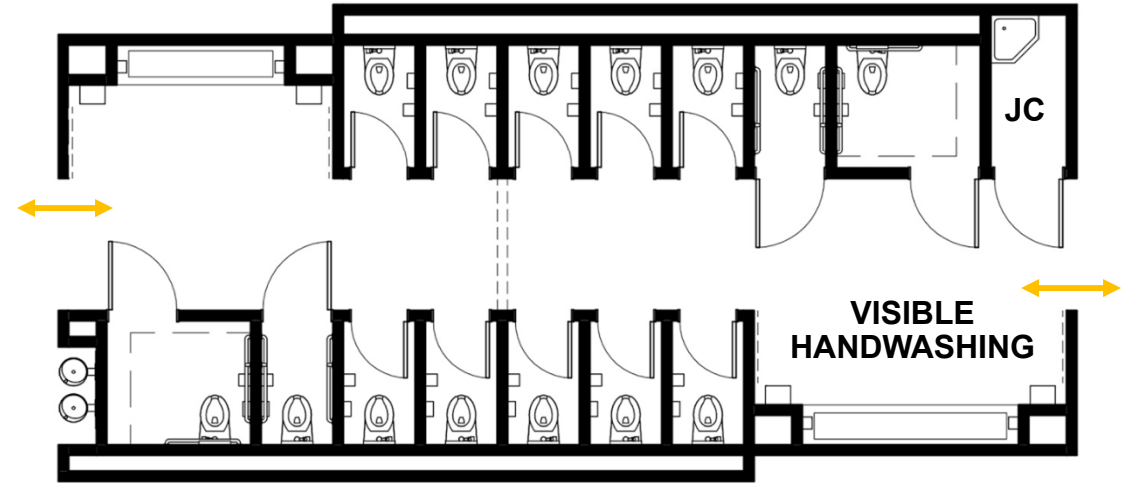
Full Height Walls
& Doors

Overlapping
Jambs

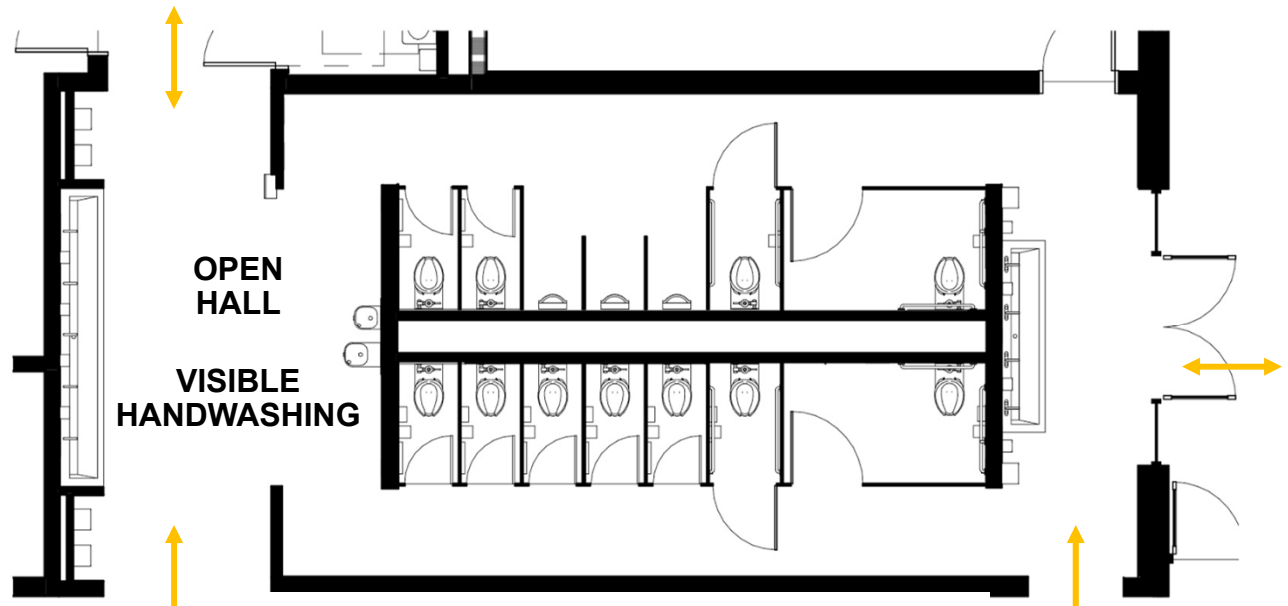
Occupancy
Indicators

Appropriate
Ventilation

Access to
Lavatories



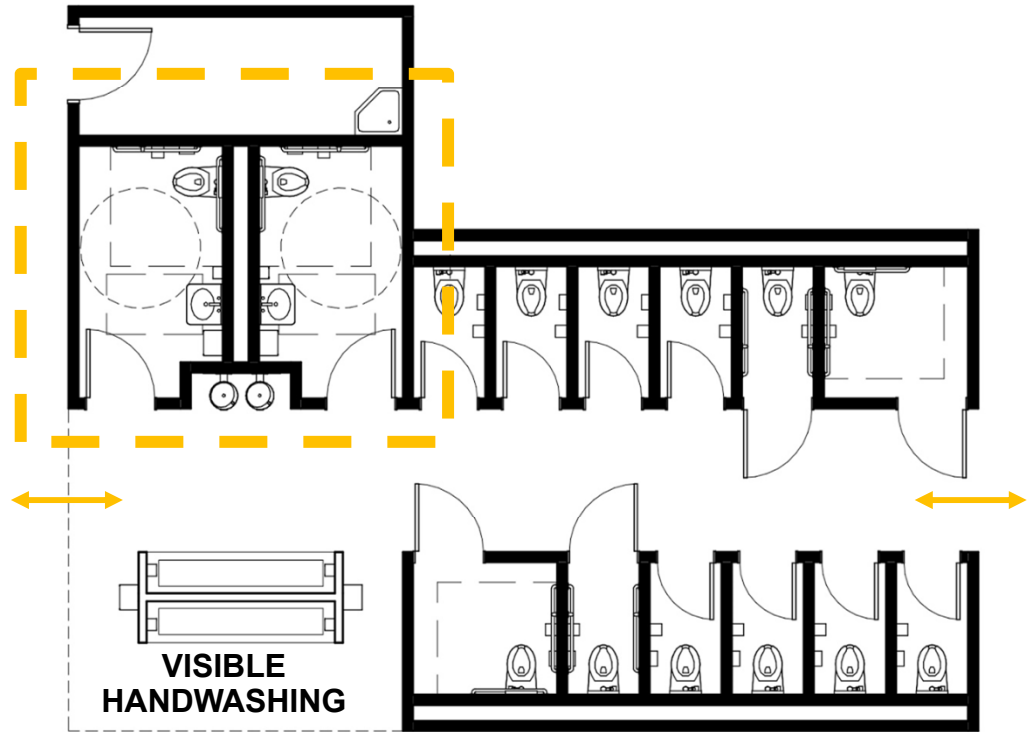
TYPE 06



TYPE 07

Assembly Spaces

Need for a variety of experiences to support all types of restroom users.



TYPE 08

Edmonds School District Board Policy

8201 – Transgender Students

The District believes in fostering an educational environment that is **safe** and free of discrimination for all students, regardless of sex, sexual orientation, gender identity or gender expression. To that end, the board recognizes the importance of an **inclusive approach** toward transgender students with regard to official records, confidential health and education information,

communication, **restroom and locker room accessibility**, sports and physical education, dress codes and other school activities, in order to provide these students with an **equal opportunity** for learning and achievement. This policy and its procedure will support that effort by facilitating District compliance with local, state and federal laws concerning harassment, intimidation, bullying and discrimination.

Edmonds School District Board Policy

8201-R1 – Procedures Relating to Transgender Students

Students will be allowed to use the restroom that corresponds to the gender identity they assert at school. No student will be required to use a restroom that conflicts with his or her gender identity. **Accessibility** will be provided to support student **safety** based on each student's individual need.

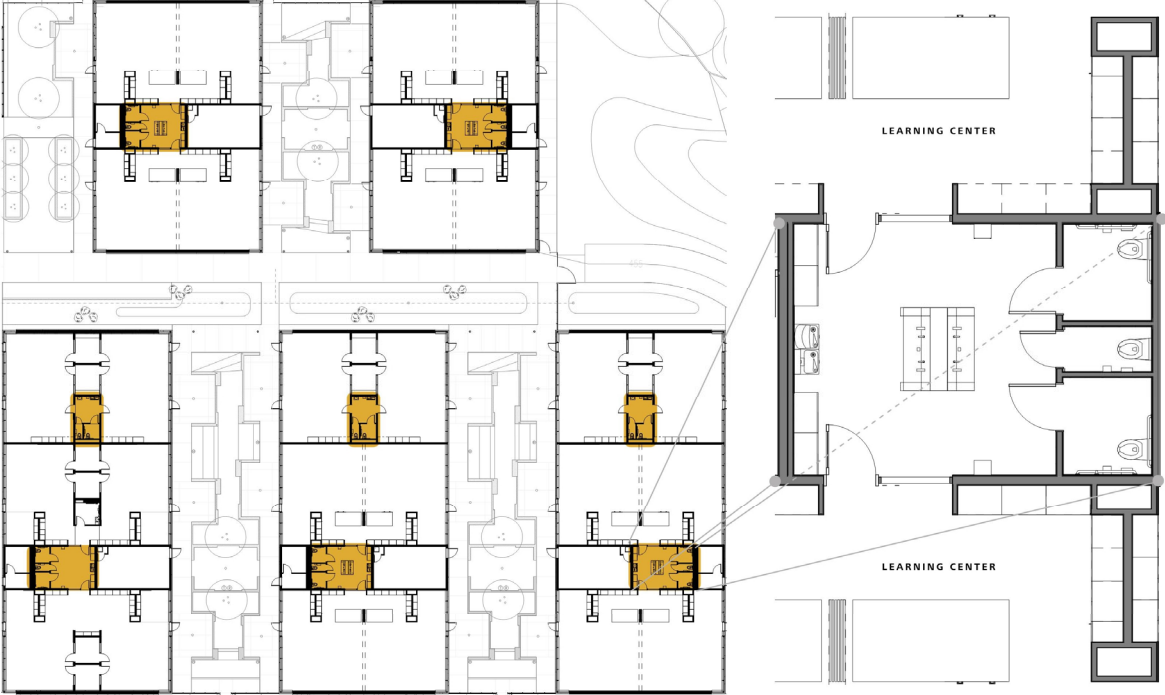
Case Study :: Madrona School (K-8)

Learning Environment



Case Study :: Madrona School (K8)

Learning Environment



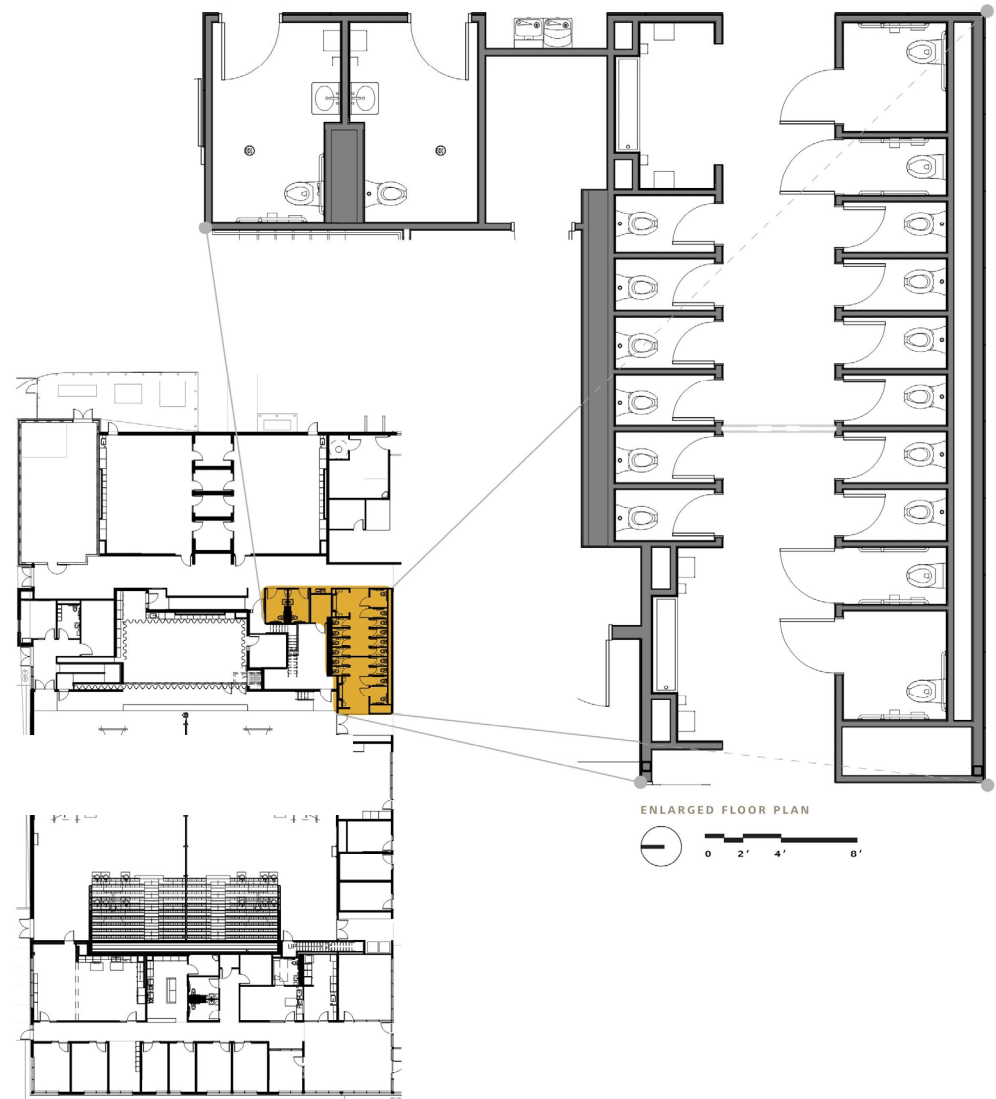
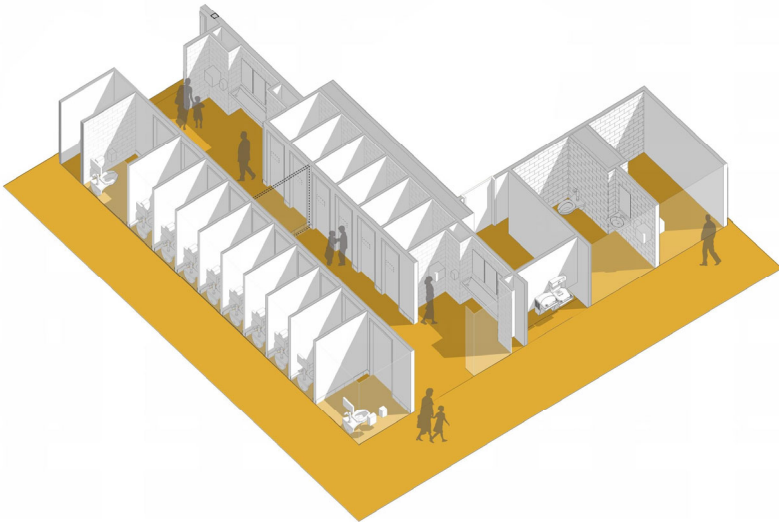
Case Study :: Madrona School (K8)

Public Gathering

Community Acceptance

Safety & Supervision

Cost & Maintenance



Case Study :: Madrona School (K-8)



Case Study :: Madrona School (K-8)



Case Study :: Vashon High School

Policy No. 3211
Students

Transgender Students

The board believes in fostering an educational environment that is safe and free of discrimination for all students, regardless of sex, sexual orientation, gender identity or gender expression. To that end, the board recognizes the importance of an inclusive approach toward transgender students with regard to official records, confidential health and education information, communication, restroom and locker room accessibility, sports and physical education, dress codes and other school activities, in order to provide these students with an equal opportunity for learning and achievement. This policy and its procedure will support that effort by facilitating district compliance with local, state and federal laws concerning harassment, intimidation, bullying and discrimination.

Legal References

RCW 28A.642 Discrimination Prohibition
20 U.S.C. §1232g, 34 C.F.R., Part 99 - Family Education Rights and Privacy Act

Cross References

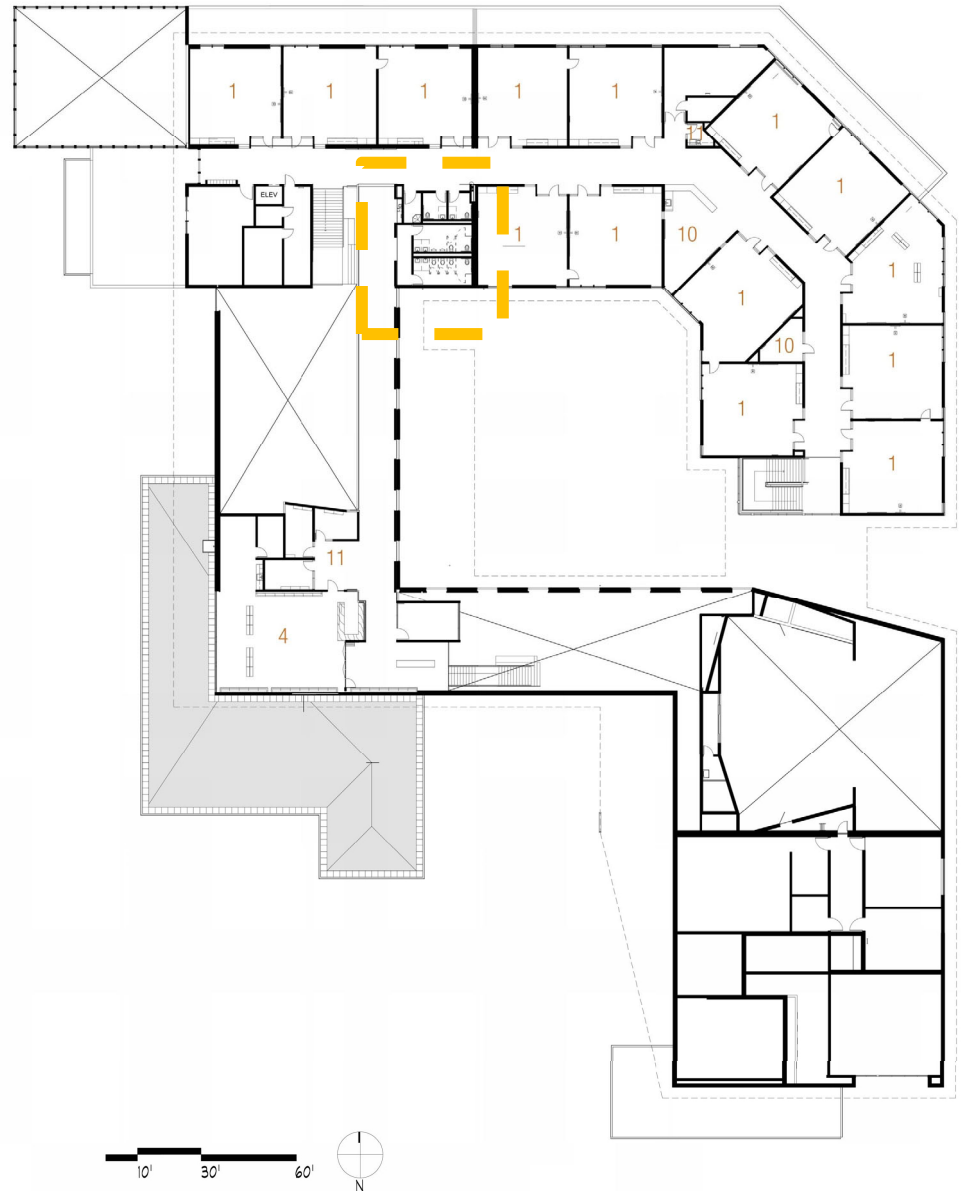
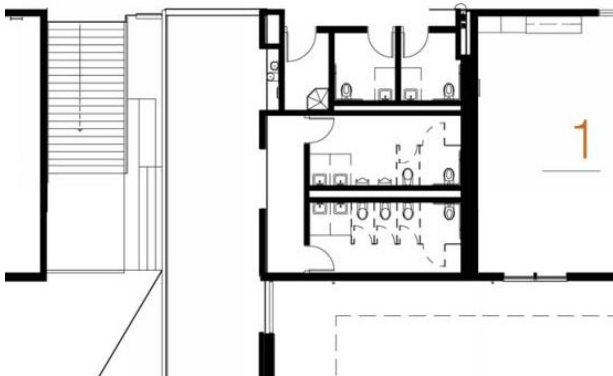
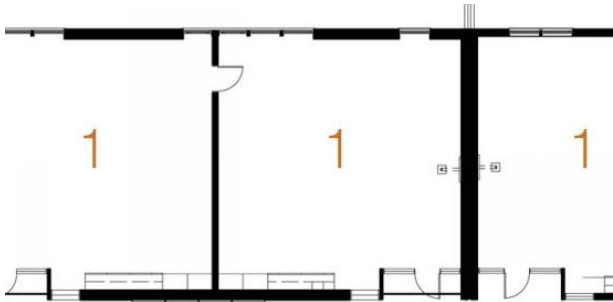
2145 - Suicide Prevention
3207 - Prohibition of Harassment, Intimidation and Bullying
3210 - Nondiscrimination
3231 - Student Records

Adoption Date: February 11, 2016
Vashon Island School District #402

Case Study :: Vashon High School

All Gender Restroom
Opened January 2018

Student Led Initiative



Case Study :: Vashon High School

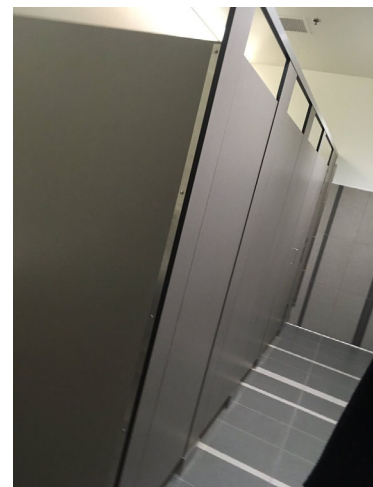
Renovation of Existing Gendered Restrooms

New Compartments ::
Privacy Guards (no gap)
Higher Partitions

Removed Urinal Fixtures

Removed Entry Doors

Provide Appropriate Sanitary Support



Case Study :: Vashon High School

Not Just Construction!

Developed
Communication
Strategy ::

All School Assemblies
Yearly Teacher
Training Programs
Parent Outreach
FAQ Document



Information About All Gender Restrooms *Common Questions and Answers*

What is an all gender restroom?

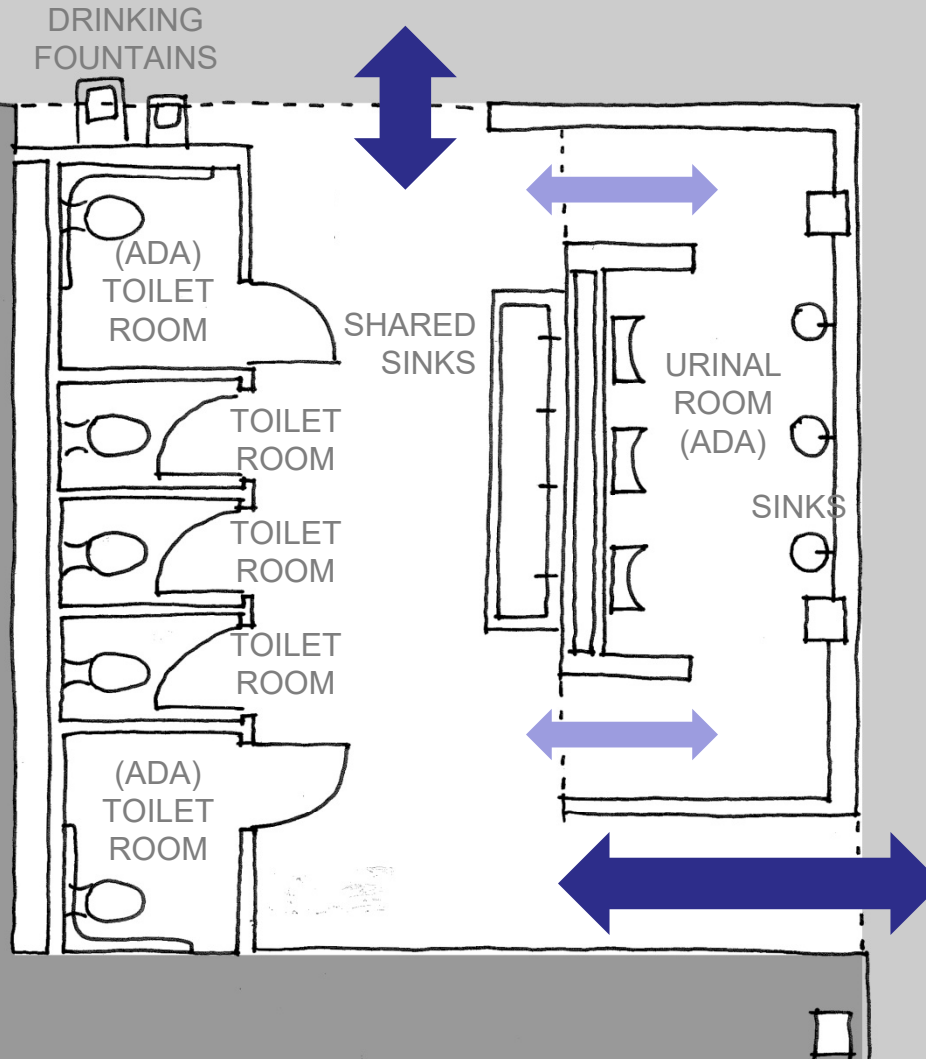
An all-gender restroom is a restroom that anyone of any gender can use. These restrooms can benefit many different people, including parents with differently gendered children, alter-abled people who may require the accompaniment of an attendant of a different gender, and trans and gender nonconforming people. All-gender restrooms are one way that students at Vashon Island High School (VHS) can work to provide a safer space for trans and gender nonconforming students, faculty, staff and community members.

Will there still be gender specific bathrooms at VIHS?

Yes. There are people who want or need to use gender specific bathrooms. The important thing is that there are equally accessible options for everyone.

Case Study :: Grant High School

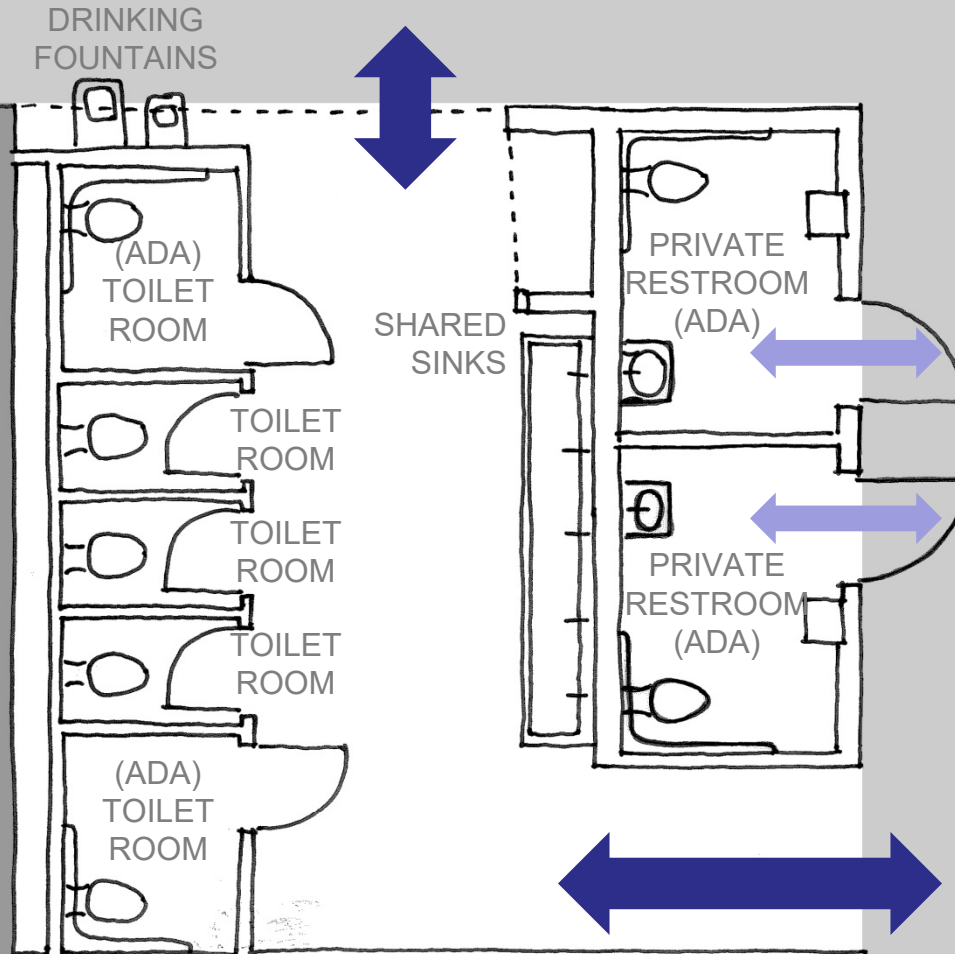
- :: Floor to ceiling walls with either full height doors, or full height partition doors
- :: (5) Fully enclosed toilet rooms; (2 of 5) accessible
- :: Fully concealed urinal room; (3) accessible urinals and (3) sinks
- :: Trough sinks with integrated hand dryers



(5) TOILETS & (3) URINALS
(7) SINKS

Case Study :: Grant High School

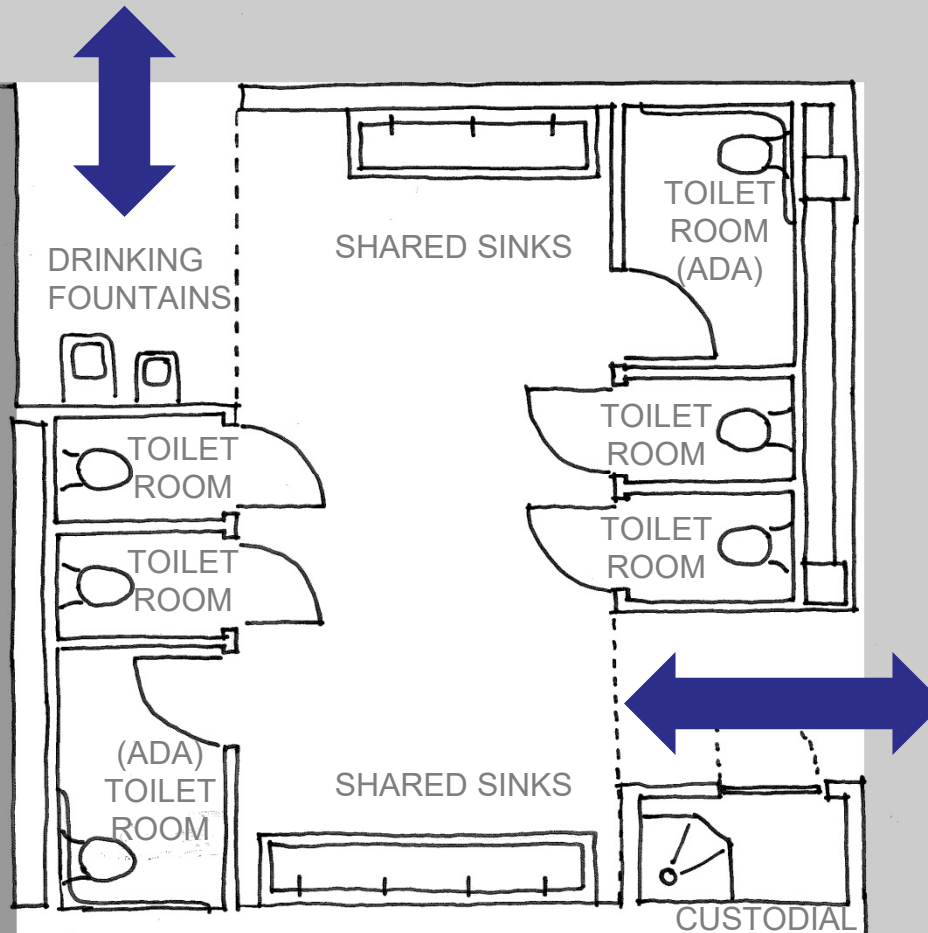
- :: Floor to ceiling walls with either full height doors, or full height partition doors
- :: (5) Fully enclosed toilet rooms; (2 of 5) accessible
- :: (2) Private accessible restrooms; corridor access only
- :: Trough sinks with integrated hand dryers



(7) TOILETS
(7) SINKS

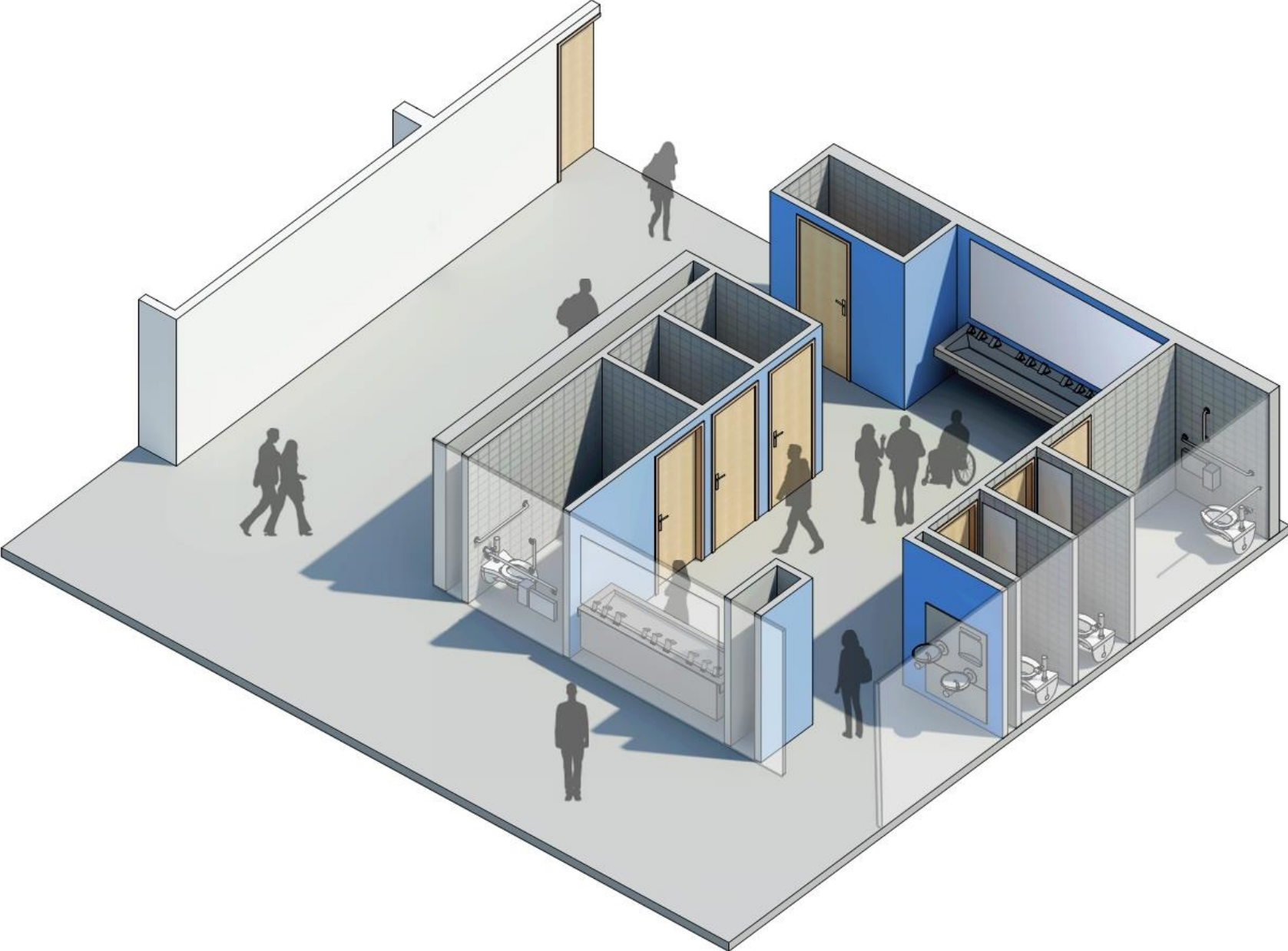
Case Study :: Grant High School

- :: Floor to ceiling walls with either full height doors, or full height partition doors
- :: (6) Fully enclosed toilet rooms; (2 of 6) accessible
- :: Trough sinks with integrated hand dryers
- :: (1) Custodial closet



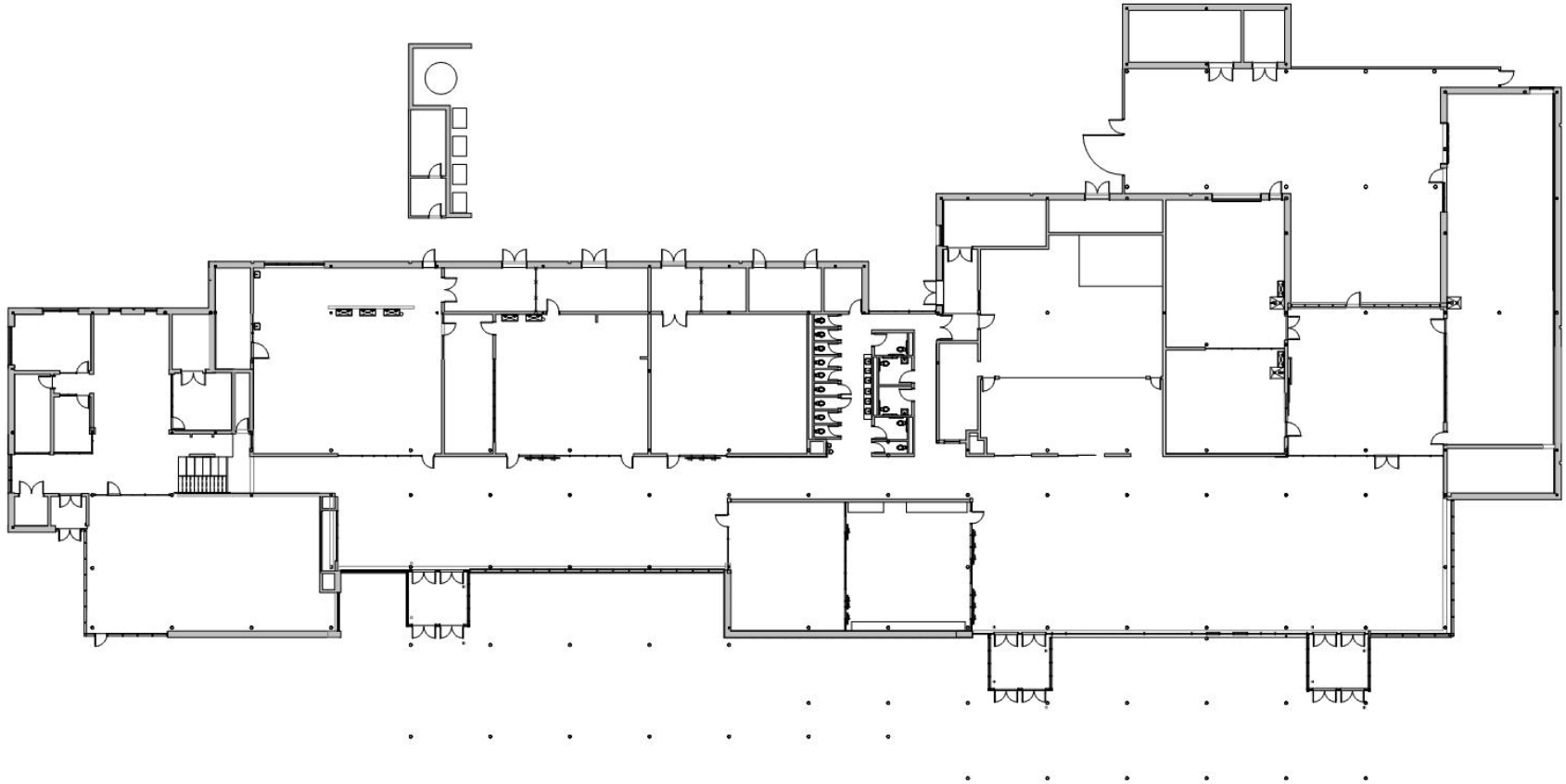
(6) TOILETS
(6-7) SINKS

Case Study :: Grant High School

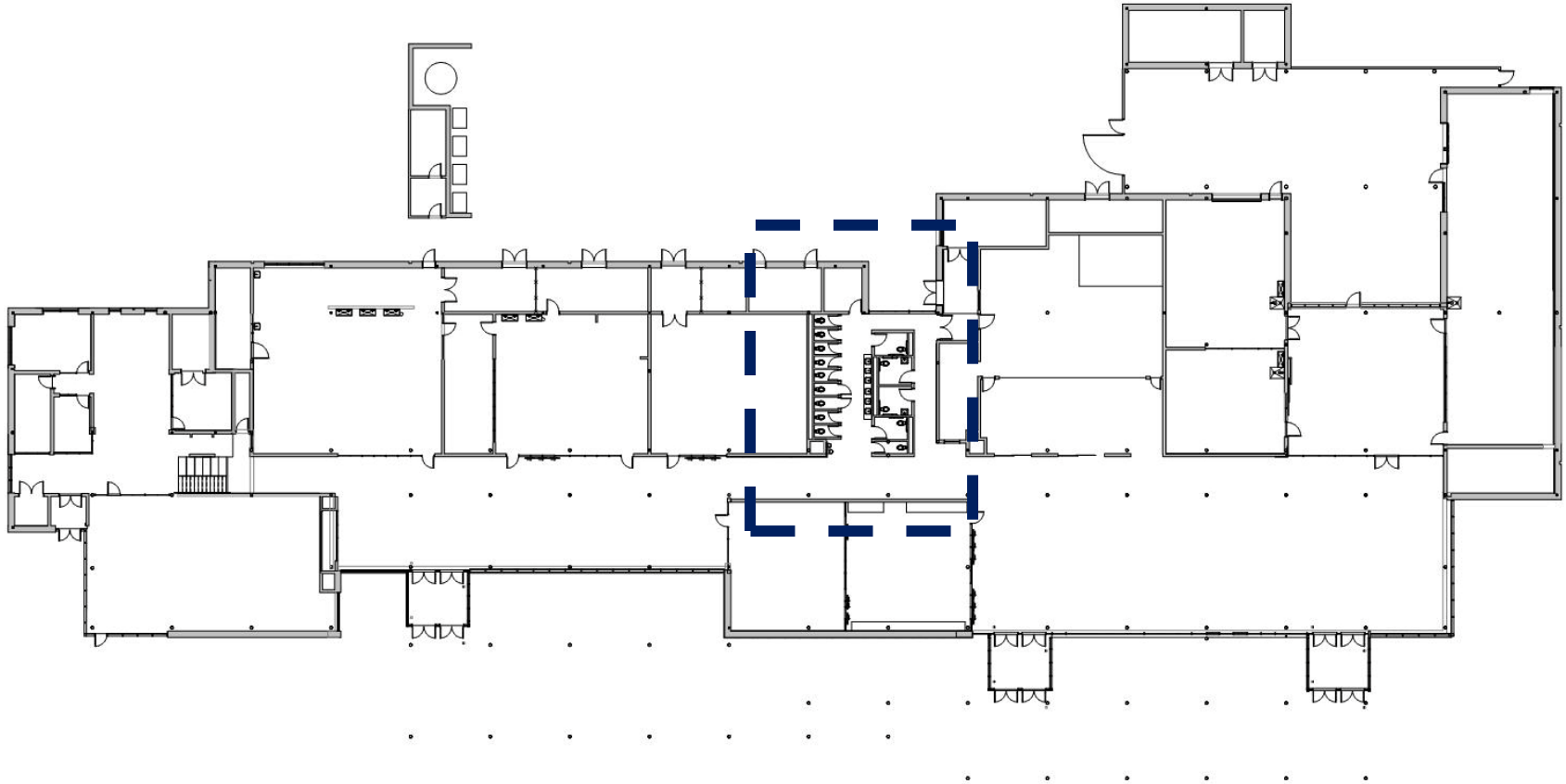


BHS 100 Building Proposal

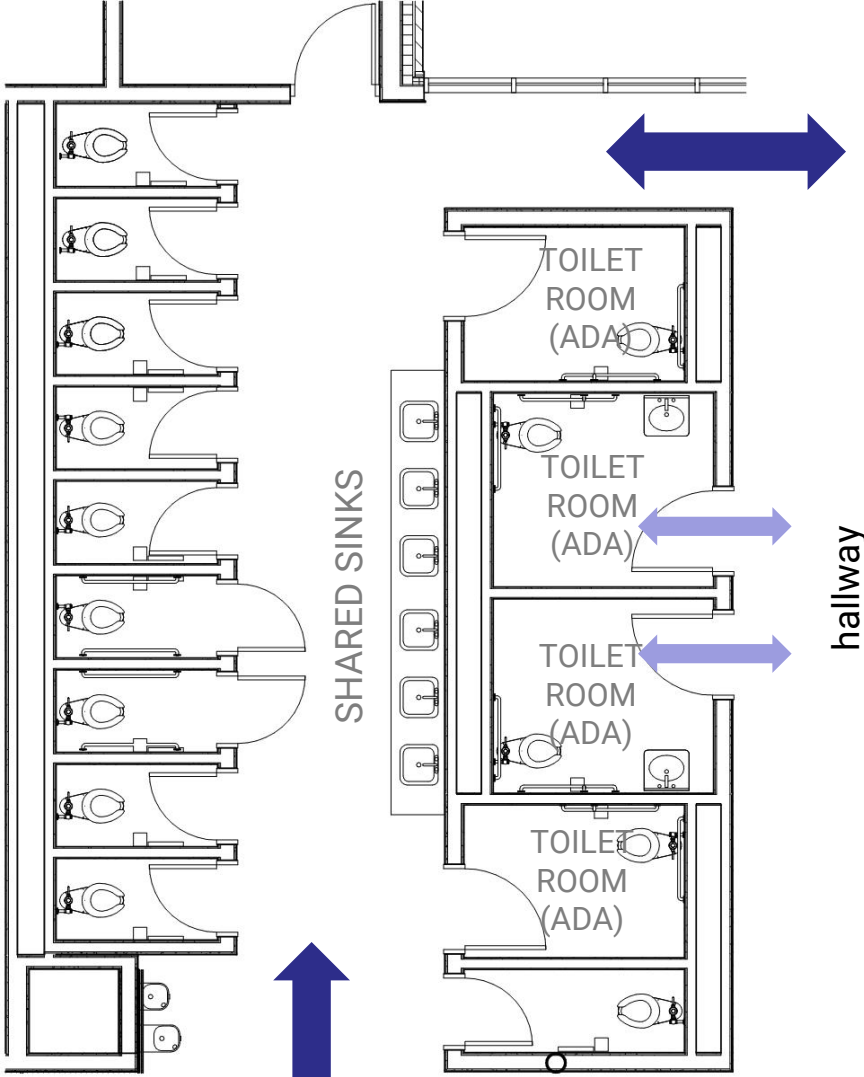
BHS 100 Building



BHS 100 Building

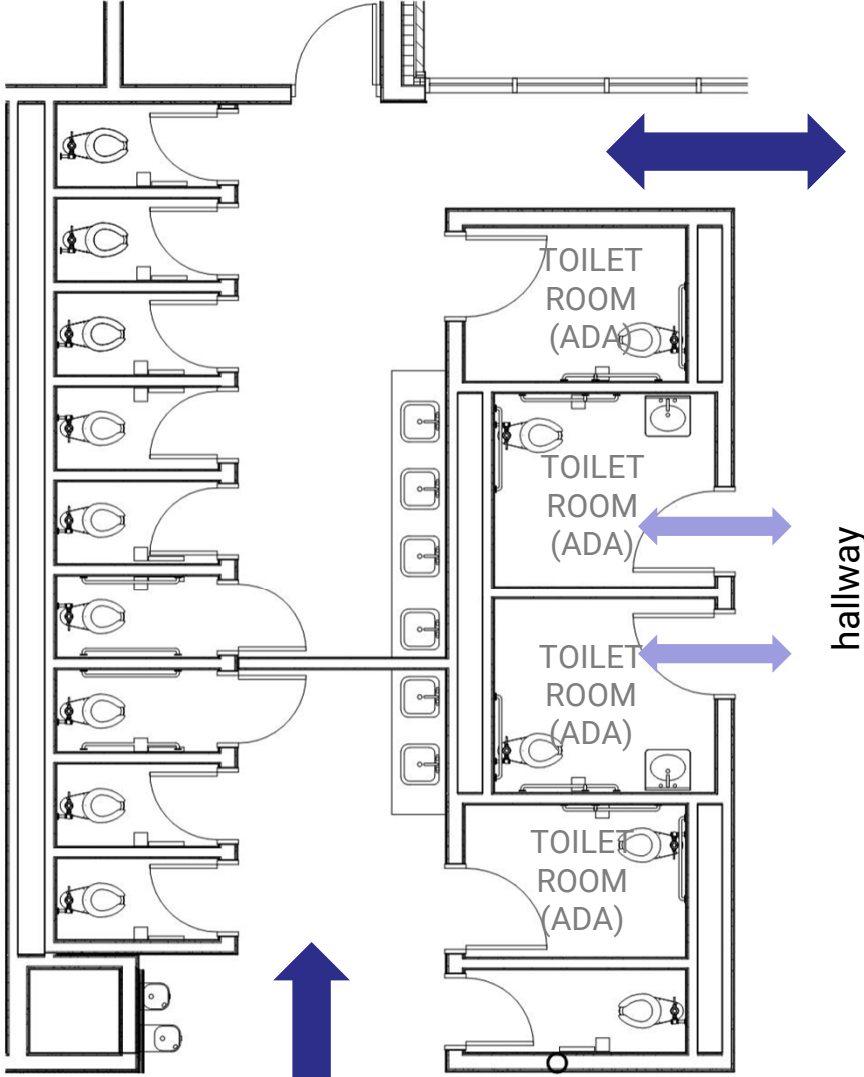


BHS 100 Building



open to hallway

BHS 100 Building



open to hallway

Questions :: Discussion