



STUDENT PHONE POLICY & GUIDELINES

Phones are not to be used during school. Every student is assigned a personal Yondr Pouch. While the Yondr Pouch is considered school property, it is each student's responsibility to keep it in good working condition.

DAILY PROCESS

As students **Arrive to School**, they will:

- 1) Turn their phone off or on airplane mode.
- 2) Place their phone inside their Pouch and secure it in front of school staff.
- 3) Store their Pouch in their backpack or locker for the day.

At the end of the day, students will open their Pouch, remove their phone and put their Pouch in the Yondr rack. Students' pouches will be kept at school everyday.

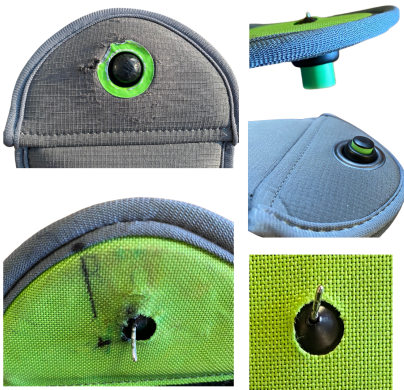
*Students arriving late or leaving early will pouch/unpouch their phones in the main office with Mrs. Davis

VIOLATIONS

Pouch Damage / Lost Pouch / Using Phone During School

- If a student damages their Pouch or is caught on their phone, Administration will collect the phone/Pouch and call home for a parent/guardian to pick up the device.
- If a pouch is damaged, school discipline may occur for Damage to School Property and a replacement fee of \$30.00 will be charged to the student account.
- If a pouch is lost while in the student's possession, a replacement fee of \$30.00 will be charged to the students account.
- If a pouch is damaged, the phone will be turned into the main office daily.

Examples of damage:



- Deep scratches on the globe and on the green ring around it
- Bent pins
- Pin and button not fully recessing, due to pin damage
- Pouch being cut open